

CPS 50/60HZ

Variable Speed Controlled Booster System



LINE OFFICIAL



Thianthong Industry (Thailand) Co., Ltd.

บจก.เทียนทองอินคัสทรี (ประเทศไทย)

Address : 680/44 Moo 5, Ban Mo District,
Amphoe Mueang Phetchaburi,
Phetchaburi, Thailand, 76000

Telephone : +66(0)86-353-7763 (Manager Director)
+66(0)61-271-5706 (Project Sale)

Email : tti@energyhealth2002.com

Thianthong Industry (Thailand) Co., Ltd.
www.energyhealth2002.com

Summary Of VFD Constant Pressure Booster Pump System

● General

Variable frequency driver constant pressure booster pump equipment is a new type of energy saving water supply equipment. Variable frequency constant pressure water supply equipment is a electromechanical integration high-tech energy-saving water supply device which combines Aikon PD ES series pump variable frequency driver with motor and water pump which using the most advanced microcomputer control technology. User can set the target pressure at the variable frequency constant pressure booster pump system discharge pipe through Aikon variable frequency driver to adjust the speed of water pump motor, realize the user pipe network pressure closed-loop adjustment, automatic constant pressure water supply system steady at target pressure : the water consumption increases, the frequency increase, the water pump speed accelerated; When the water consumption decreases, the frequency decreases and the pump speed slows down. In this way, the whole user network is guaranteed to have sufficient water pressure (consistent with the pressure set by the user) and water flow (varying with the user's water use) at any time.

● Application

Resident water for living: such as high-rise building, resident community, villa

Public places: such as hospital, school, gymnasium, golf court, airport

Commercial building: such as hotel, office building, department store, large-scale sauna

Irrigation: such as park, amusement park, orchard, farm

Manufacturing industry: such as production manufacturing, washing device, food industry, factory.

● Advantages

Solve the problem of low hydraulic pressure

- The booster system keeps the water pressure stable in the whole building.

Avoid water pollution caused by roof tank

-Replace the traditional roof tank water supply way, eliminate the source of water pollution.

Reduce the construction cost and enlarge the space

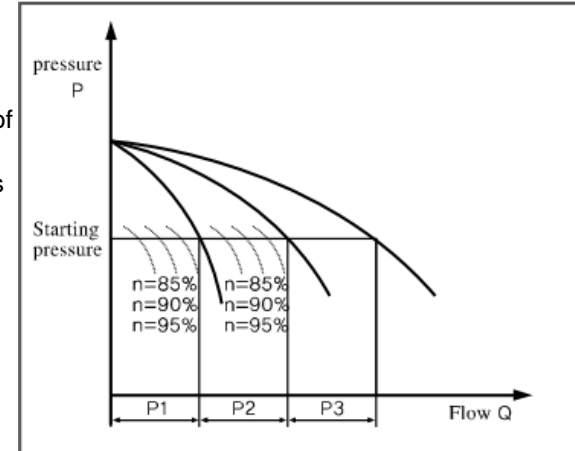
-Eliminate traditional roof tank, reduce the stress for the building, structure is simple, lower cost. Save power, less space

-Compared with common water supply equipment, it can may save max 75% electric energy. This equipment covers less floor area, its installation simpler and construction period shorter.

Summary Of VFD Constant Pressure Booster Pump System

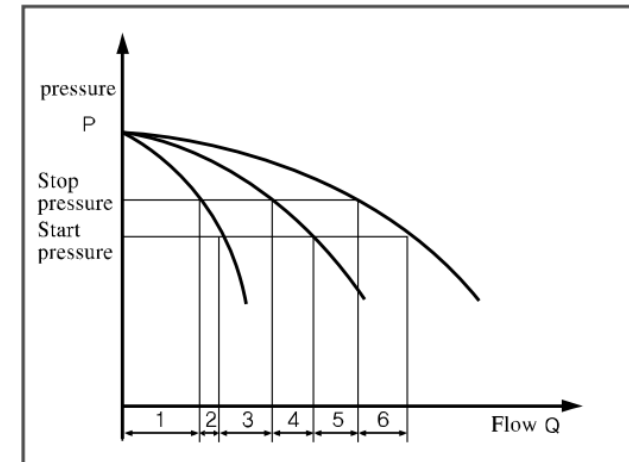
● Frequency conversion control

Keep the pressure of pipe network constant by adjusting the rotational speed of the water pump. When the pressure inspected at the outlet pipe of the system is smaller than the start pressure value of the water pump, it is able to automatically adjust the rotational speed of the water pump to keep the outlet pressure constant. In case the pump is operated at the rotational speed of power frequency while the pressure can't reach setting pressure, the system will start P2, P3 pump in turn; With the reduction of water consumption, the outlet pressure increases, and the rotational speed of the water pump goes down gradually. If the rotational speed of the water pump reduces to the lowest speed set by the system, the system will stop the operation of the water pump in the turn of P3,P2,P1.



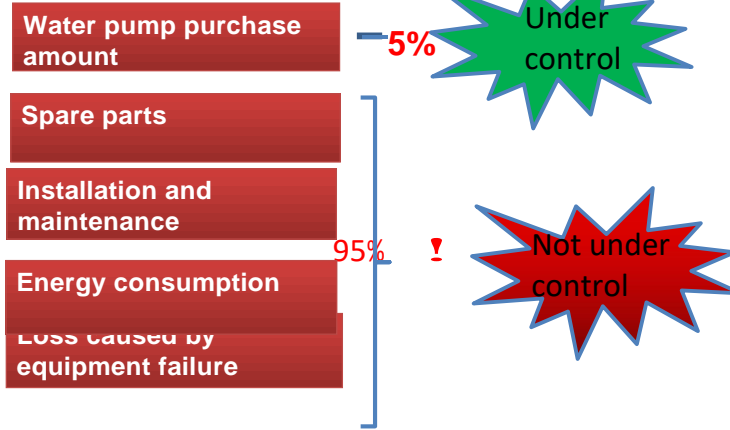
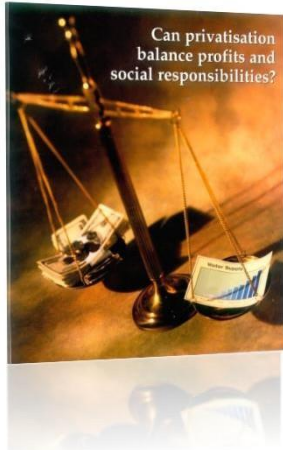
● Pressure control

When the pressure of the pipe network reaches stop pressure during operation, stop the operation of the water pump. After the pump starts, when the pressure of pipe network exceeds the start pressure, not reaching the stop pressure, the water pump continues operating; After the water pump is operated at full speed, when the pressure of pipe network has not reached the start pressure, the spare water pump start.



Summary Of VFD Constant Pressure Booster Pump System

● Pump life cycle use cost analysis



The solution to decrease not control fee for Aikon booster system

● Save Energy cost

Constant pressure, Reduce your energy expenditure up to 70% of the original.

● Save maintenance cost

Reduce the general duty on mechanical and bearing, and the QTY of rotation, prolong the maintenance interval, substantially reduce the cost of Spare parts and work cost.

● Special design for motor protection

Over 90% motor broken is because of over heat; Internal build terminal read PTC, Protect demaging from overheat, motor lifetime increases 5~10years.

● Dry run protection

Dry running is big damage for mechanical seal, put a dry run sensor on the suction pipe then connect with our VFD will avoid it happen.

● Pipe bursting protection

How to avoid the pump room to be flooded because of the pipe bursting?

Use a electric level sensor and connect Aikon VFD will help you solve it easily.

● Pump bearing monitoring

The most obvious phenomenon of pump problems are vibration or bearing overheat, how to find the problem at the first time to avoid the pump be broken?

Use a PT100 or vibration sensor on the pump bearing, then connect with Aikon VFD will help you extend your pump life time.

● Avoid water hammer

No matter positive or negative water hammer, they all have big damage for pipe system and pumps, when you use Aikon VFD you will get a soft start and soft stop function, decrease the system damage because of water hammer.

Summary Of VFD Constant Pressure Booster Pump System

● Remote Control

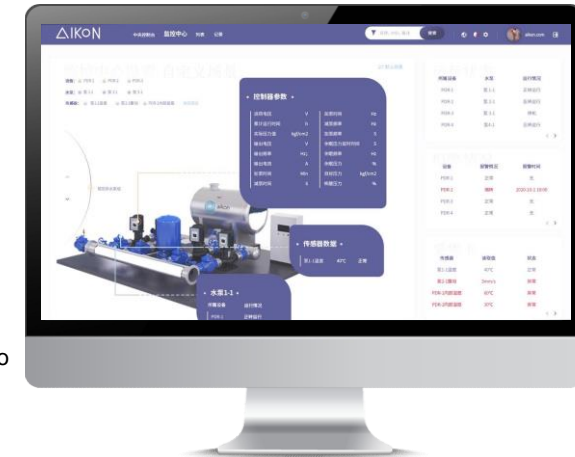
Remote control the VFD start and stop
Remote control the pipe pressure.

● Remote Monitoring

Remote monitor pump and motor working condition, such as pump vibration, bearing temperature sensor, pipe pressure, motor voltage, current etc.

● Fault feedback

When happen to fault, you will get an email to inform you to check the pump system.



Efficient energy use

PD ES's intelligent control system can precisely adapt to needs, so it will only use energy consumption on demand. No more, no less. This can not only reduce your energy expenditure to 70% of the original, but in many cases, it can also enable you to qualify for the national energy saving award in the field of its application. So these can make up for your transformation and daily operating costs.

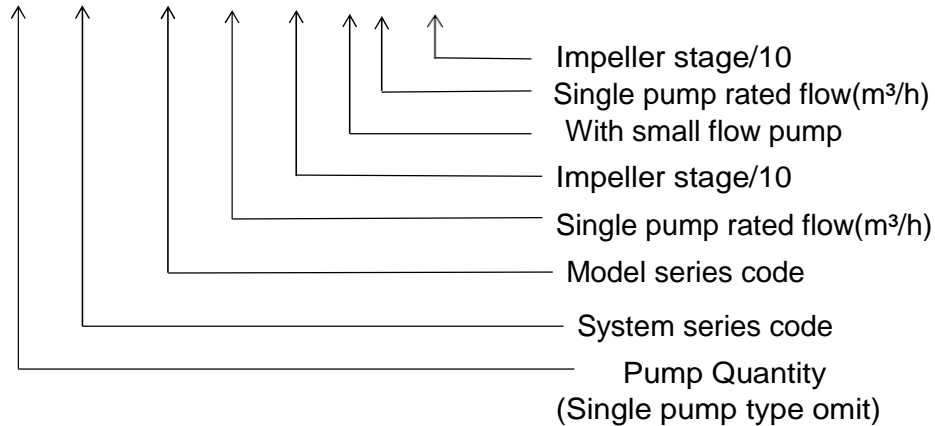
ability	Power consumption according to the curve		Energy saving	Every 1/3 year (2.920 hours) Energy saving
	pump is running at a constant speed	pump is running at a variable speed		
25 %	5,8 kW	1,8 kW	4,0 kW	11.680 kWh
50 %	7,6 kW	3,2 kW	4,4 kW	12.848 kWh
75 %	9,2 kW	5,7 kW	3,5 kW	10.220 kWh
1 year (8.760 hours) energy saving				34.748 kWh

Summary Of VFD Constant Pressure Booster Pump System

● Definition of Model

Example: 3 pumps including a small flow pump

3 CPS-CDLF 20 - 40 S 8-50



● Main components instruction

1. Vertical Multistage Pump

- Wet Parts full stainless steel material(SS304,SS316L,SS2205)
- Cartridge Mechanical
- IE3 high efficiency motor



2. Variable Frequency Driver

- IP65 high protection rating, motor mounted.
- Special Design for pump, built in pump control and protection function no need extra PLC
- Constant pressure control / Alternating pump function / Dry run protection function / Motor overheat protection/ Overflow protection/Over current protection/Over load Protection/Over-Under voltage protection



3. Human Machine Interface(HMI)

- 7 or 10inch size
- Built into program suitable for Aikon booster system
- Easy operation with clear operation interface
- Easy parameter setting
- History record
- Multi-Languages option



Summary Of VFD Constant Pressure Booster Pump System

4. Stainless Steel Moniflod Pipe

- SS304/SS316/SS2205 material
- Seamless welding
- Robot welding, high precision



5. Heavy Duty Baseplate

- Heavy duty design, more stable
- Low vibration

6. Pressure Transmitter

- Swiss metallx brand chip
- Pressure range:0~10bar, 0~16bar,0~25bar, 0~40bar



7. Valve

- High quality stainless steel valve



8. Pressure tank

Stainless Steel material with wide pressure range



2 pcs Vertical Pumps Constant Pressure Booster 2CPS 50HZ

Main Components



No.	Name	Quantity	Remark
1	Vertical multistage pump	2	SS304/SS316
2	VFD	2	IP65 protection
3	Pressure transmitter	3	0~16bar range
4	Control cabinet with HMI	1	10" HMI
5	Inlet and outlet pipe	one set	SS304
6	Pressure guage	2	
7	Valve	6	Ball valve/butterfly valve/check valve
8	Pressure tank	1	5L
9	Base frame	1	Carbon steel

Performance table

Model	Motor power	Inlet/Outlet Pipe	Pressure tank	Flow m³/h	Head H(m)												
	KW				DN	L/Bar	0.8	1.2	1.6	2	2.4	2.8	3.2	3.6			
2CPS-CDLF1-20	0.37	50	5/6	13	12.5	12	11.5	11	10.5	10	9.5						
2CPS-CDLF1-30	0.37	50	5/6	19	18	17.5	17	16.5	16	15	14						
2CPS-CDLF1-40	0.37	50	5/6	24	23.5	23	22.5	21.5	21	19	18						
2CPS-CDLF1-50	0.37	50	5/6	30	29.6	29	28	27	26	24	22						
2CPS-CDLF1-60	0.37	50	5/10	36	35.5	35	33.5	33	31	28	26						
2CPS-CDLF1-70	0.37	50	5/10	42	41	40.5	39	38	36	33	30						
2CPS-CDLF1-80	0.55	50	5/10	48	47	46	45	43	41	38	34						
2CPS-CDLF1-90	0.55	50	5/10	54	53	52	51	49	46	43	39						
2CPS-CDLF1-100	0.55	50	5/10	60	59	58	57	54	51	48	43						
2CPS-CDLF1-110	0.55	50	5/10	66	65	63	61	59	56	52	47						
2CPS-CDLF1-120	0.75	50	5/10	72	71	69	67	64	61	57	51						
2CPS-CDLF1-130	0.75	50	5/10	78	77	75	73	69	66	62	55						
2CPS-CDLF1-150	0.75	50	5/16	89	88	86	84	79	76	71	63						
2CPS-CDLF1-170	1.1	50	5/16	101	99	97	95	89	86	80	71						
2CPS-CDLF1-190	1.1	50	5/16	113	110	108	106	99	96	88	79						
2CPS-CDLF1-210	1.1	50	5/16	124	122	120	117	110	106	98	87						
2CPS-CDLF1-230	1.1	50	5/25	137	133	131	128	121	116	107	96						
2CPS-CDLF1-250	1.5	50	5/25	149	145	143	139	131	126	116	104						
2CPS-CDLF1-270	1.5	50	5/25	161	157	155	150	141	136	125	112						
2CPS-CDLF1-300	1.5	50	5/25	178	175	171	166	157	150	139	124						
2CPS-CDLF1-330	2.2	50	5/25	196	192	188	183	173	165	154	137						
2CPS-CDLF1-360	2.2	50	5/25	214	210	205	200	190	181	169	151						

Model	Motor power	Inlet/Outlet Pipe	Pressure tank	Flow m³/h	Head H(m)												
	KW				DN	L/Bar	2	2.4	3.2	4	4.8	5.6	6.4	7			
2CPS-CDLF2-20	0.37	50	5/6	18	17	16	15	13	12	10	8						
2CPS-CDLF2-30	0.37	50	5/6	27	26	24	22	20	18	15	12						
2CPS-CDLF2-40	0.55	50	5/6	36	35	33	30	26	24	20	16						
2CPS-CDLF2-50	0.55	50	5/10	45	43	40	37	33	30	24	20						
2CPS-CDLF2-60	0.75	50	5/10	53	52	50	45	40	36	30	24						
2CPS-CDLF2-70	0.75	50	5/10	63	61	57	52	47	41	35	28						
2CPS-CDLF2-90	1.1	50	5/10	80	78	73	67	61	54	45	37						
2CPS-CDLF2-110	1.1	50	5/16	98	95	89	82	73	64	54	44						
2CPS-CDLF2-130	1.5	50	5/16	116	114	106	98	89	78	65	52						
2CPS-CDLF2-150	1.5	50	5/25	134	130	123	112	100	90	73	60						
2CPS-CDLF2-180	2.2	50	5/25	161	157	148	136	121	108	91	76						
2CPS-CDLF2-220	2.2	50	5/25	197	192	180	165	148	130	110	90						
2CPS-CDLF2-260	3	50	5/25	232	228	214	198	179	158	130	110						

2 pcs Vertical Pumps Constant Pressure Booster 2CPS 50HZ

Performance table

Model	Motor power	Inlet/Outlet Pipe	Pressure tank	Flow m³/h	Head H(m)												
	KW				DN	L/Bar	2.4	3.2	4	4.8	5.6	6	6.4	7.2	8		
2CPS-CDLF3-20	0.37	50	5/6	12.5	11.5	11	10.5	10	9	8	7	6					
2CPS-CDLF3-30	0.37	50	5/6	19	18.5	17.5	16.5	15	14	13	11	9					
2CPS-CDLF3-40	0.37	50	5/6	25	24	23	21.5	20	19	18	15	12					
2CPS-CDLF3-50	0.37	50	5/6	31	30	29	27	25	23	22	19	16					
2CPS-CDLF3-60	0.55	50	5/6	36	35	34	32	30	28	27	23	19					
2CPS-CDLF3-70	0.55	50	5/10	43	41	39	37	34	32	31	27	22					
2CPS-CDLF3-80	0.75	50	5/10	49	47	45	43	39	37	35	31	25					
2CPS-CDLF3-90	0.75	50	5/10	55	53	51	48	45	42	40	35	28					
2CPS-CDLF3-100	0.75	50	5/10	61	59	57	54	50	47	45	39	31					
2CPS-CDLF3-110	1.1	50	5/10	67	64	61	58	54	51	49	42	34					
2CPS-CDLF3-120	1.1	50	5/10	73	70	67	63	58	55	52	45	37					
2CPS-CDLF3-130	1.1	50	5/16	78	76	73	69	64	60	57	49	40					
2CPS-CDLF3-150	1.1	50	5/16	90	88	84	79	73	69	66	57	46					
2CPS-CDLF3-170	1.5	50	5/16	103	100	96	90	83	79	75	64	52					
2CPS-CDLF3-190	1.5	50	5/16	115	112	107	100	92	88	83	72	58					
2CPS-CDLF3-210	2.2	50	5/16	128	124	119	112	102	98	91	79	64					
2CPS-CDLF3-230	2.2	50	5/25	140	135	130	122	112	107	100	86	70					
2CPS-CDLF3-250	2.2	50	5/25	151	147	141	131	122	116	109	94	76					
2CPS-CDLF3-270	2.2	50	5/25	164	159	152	143	132	124	117	101	82					
2CPS-CDLF3-290	2.2	50	5/25	175	170	163	153	142	133	126	109	88					
2CPS-CDLF3-310	3.0	50	5/25	187	182	175	165	153	142	135	116	94					
2CPS-CDLF3-330	3.0	50	5/25	199	194	187	176	163	151	145	125	100					
2CPS-CDLF3-360	3.0	50	5/25	218	212	204	192	178	168	159	137	109					

Model	Motor power	Inlet/Outlet Pipe	Pressure tank	Flow m³/h	Head H(m)											
	KW				DN	L/Bar	3	4	6	8	10	12	14			
2CPS-CDLF4-20	0.37	50	5/6	19	18	17	15	13	10	8						
2CPS-CDLF4-30	0.55	50	5/6	28	27	26	24	20	18	13						
2CPS-CDLF4-40	0.75	50	5/6	38	36	34	32	27	24	19						
2CPS-CDLF4-50	1.1	50	5/10	47	45	43	40	34	31	23						
2CPS-CDLF4-60	1.1	50	5/10	56	54	52	48	41	37	28						
2CPS-CDLF4-70	1.5	50	5/10	66	63	61	56	48	43	33						
2CPS-CDLF4-80	1.5	50	5/10	74	72	70	64	55	50	38						
2CPS-CDLF4-100	2.2	50	5/16	96	90	87	81	71	62	48						
2CPS-CDLF4-120	2.2	50	5/16	114	108	104	95	85	75	58						
2CPS-CDLF4-140	3	50	5/16	136	126	122	112	101	89	68						
2CPS-CDLF4-160	3	50	5/25	152	144	140	129	115	101	78						
2CPS-CDLF4-190	4	50	5/25	183	171	168	153	137	122	93						
2CPS-CDLF4-220	4	50	5/25	211	200	192	178	160	138	108						

2 pcs Vertical Pumps Constant Pressure Booster 2CPS 50HZ

● Performance table

Model	Motor power	Inlet/Outlet Pipe	Pressure tank	Flow m³/h	6	8	10	12	14	16
	KW	DN	L/Bar							
2CPS-CDLF5-20	0.37	50	5/6	Head H(m)	12	11	10	9	7	4
2CPS-CDLF5-30	0.55	50	5/6		18	17	15	14	11	9
2CPS-CDLF5-40	0.55	50	5/6		24	22	20	18	15	12
2CPS-CDLF5-50	0.75	50	5/6		31	28	26	23	19	16
2CPS-CDLF5-60	1.1	50	5/6		37	35	32	27	23	19
2CPS-CDLF5-70	1.1	50	5/10		43	41	37	33	27	22
2CPS-CDLF5-80	1.1	50	5/10		50	47	43	38	32	25
2CPS-CDLF5-90	1.5	50	5/10		56	53	48	43	37	29
2CPS-CDLF5-100	1.5	50	5/10		62	59	54	48	41	34
2CPS-CDLF5-110	2.2	50	5/10		68	64	59	53	46	38
2CPS-CDLF5-120	2.2	50	5/10		74	70	65	58	50	41
2CPS-CDLF5-130	2.2	50	5/10		80	76	70	62	54	44
2CPS-CDLF5-140	2.2	50	5/16		86	81	75	68	58	47
2CPS-CDLF5-150	2.2	50	5/16		92	87	81	73	63	51
2CPS-CDLF5-160	2.2	50	5/16		99	93	87	79	69	55
2CPS-CDLF5-180	3	50	5/16		111	106	100	90	79	63
2CPS-CDLF5-200	3	50	5/16		123	118	112	102	89	71
2CPS-CDLF5-220	4	50	5/16		135	130	123	112	99	79
2CPS-CDLF5-240	4	50	5/25		147	142	134	122	107	87
2CPS-CDLF5-260	4	50	5/25		159	155	146	133	116	94
2CPS-CDLF5-290	4	50	5/25	181	174	164	149	131	107	
2CPS-CDLF5-320	5.5	50	5/25	200	193	181	164	145	120	
2CPS-CDLF5-360	5.5	50	5/25	227	219	205	188	165	138	

2 pcs Vertical Pumps Constant Pressure Booster 2CPS 50HZ

● Performance table

Model	Motor power	Inlet/Outlet Pipe	Pressure tank	Flow m³/h	10	12	14	16	18	20	22	24	26
	KW	DN	L/Bar										
2CPS-CDLF10-1	0.75	65	5/6	Head H(m)	9.7	9.3	8.9	8.3	7.7	7	6	5	4
2CPS-CDLF10-2	0.75	65	5/6		19.5	19	18	17	16	15	13.5	11.5	10
2CPS-CDLF10-3	1.1	65	5/6		29.5	29	28	27	25	23	21	18	16
2CPS-CDLF10-4	1.5	65	5/6		39.5	38.5	37.5	36	34	31	28	25	22
2CPS-CDLF10-5	2.2	65	5/10		49.5	48.5	47	44	42	39	35	32	28
2CPS-CDLF10-6	2.2	65	5/10		60	58	56	54	51	48	43	39	34
2CPS-CDLF10-7	3	65	5/10		70	68	66	63	60	56	51	45	39
2CPS-CDLF10-8	3	65	5/16		80	78	75	73	69	64	58	52	44
2CPS-CDLF10-9	3	65	5/16		90	87	85	81	77	72	66	58	50
2CPS-CDLF10-10	4	65	5/16		100	97	95	90	85	80	74	66	56
2CPS-CDLF10-12	4	65	5/16		120	117	114	109	104	96	89	79	68
2CPS-CDLF10-14	5.5	65	5/16		140	137	134	129	122	113	103	92	79
2CPS-CDLF10-16	5.5	65	5/25		160	158	153	148	140	129	119	106	91
2CPS-CDLF10-18	7.5	65	5/25		180	177	172	166	156	145	133	119	102
2CPS-CDLF10-20	7.5	65	5/25		200	196	191	184	173	162	147	132	114
2CPS-CDLF10-22	7.5	65	5/25		220	216	210	202	190	178	162	145	126

Model	Motor power	Inlet/Outlet Pipe	Pressure tank	Flow m³/h	14	16	18	20	22	24	26	28	30	32
	KW	DN	L/Bar											
2CPS-CDLF12-20	1.5	80	5/6	Head H(m)	23.5	23	22.5	22	21	20	18.5	17	15.5	14
2CPS-CDLF12-30	2.2	80	5/6		35.5	35	34	33	31.5	30	28	26	23.5	21
2CPS-CDLF12-40	3	80	5/6		47	46	45	44	42	40	37	34	31	28
2CPS-CDLF12-50	3	80	5/10		59.5	58	56.5	55	52.5	50	46.5	43	39	35
2CPS-CDLF12-60	4	80	5/10		71.5	70	68	66	63	60	56	52	47	42
2CPS-CDLF12-70	5.5	80	5/16		83.5	82	79.5	77	73.5	70	65.5	61	55	49
2CPS-CDLF12-80	5.5	80	5/16		95.5	94	91	88	84	80	75	70	63	56
2CPS-CDLF12-90	5.5	80	5/16		108	106	103	100	95.5	91	85	79	71.5	64
2CPS-CDLF12-100	7.5	80	5/16		120	118	114.5	111	106	101	94.5	88	80	72
2CPS-CDLF12-120	7.5	80	5/25		143.5	141	137	133	127	121	113.5	106	96	86
2CPS-CDLF12-140	9.2	80	5/25		168	165	160	155	148	141	132.5	124	112	100
2CPS-CDLF12-160	11	80	5/25		192.5	189	183.5	178	170	162	152	142	128.5	115
2CPS-CDLF12-180	11	80	5/25		217	213	207.5	202	192.5	183	171.5	160	145	130

Model	Motor power	Inlet/Outlet Pipe	Pressure tank	Flow m³/h	10	12	14	16	18	20	22	24
	KW	DN	L/Bar									
2CPS-CDLF8-20	0.75	65	5/6	Head H(m)	20	19.5	19	18	17	16	14	13
2CPS-CDLF8-30	1.1	65	5/6		30	29.5	28.5	27	25	24	21	19
2CPS-CDLF8-40	1.5	65	5/6		41	39.5	38	36	34	32	28	26
2CPS-CDLF8-50	2.2	65	5/10		52	50	48	45	42	40	36	32
2CPS-CDLF8-60	2.2	65	5/10		62	60	57	54	51	48	43	39
2CPS-CDLF8-80	3	65	5/10		83	80	77	73	69	65	58	52
2CPS-CDLF8-100	4	65	5/10		104	100	97	92	87	81	73	65
2CPS-CDLF8-120	4	65	5/16		124	120	116	111	104	92	87	78
2CPS-CDLF8-140	5.5	65	5/16		145	141	136	130	122	113	102	92
2CPS-CDLF8-160	5.5	65	5/16		166	161	156	148	139	130	118	106
2CPS-CDLF8-180	7.5	65	5/25		187	182	175	167	157	146	134	120
2CPS-CDLF8-200	7.5	65	5/25		208	202	195	186	175	163	150	135

Model	Motor power	Inlet/Outlet Pipe	Pressure tank	Flow m³/h	16	20	24	28	32	36	40	44
	KW	DN	L/Bar									
2CPS-CDLF15-10	1.1	80	5/6	Head H(m)	12	11.5	11	10.5	9.5	8.5	7.5	6.5
2CPS-CDLF15-20	2.2	80	5/6		25	24.5	24	23	21.5	20	18	16
2CPS-CDLF15-30	3	80	5/6		39	38	37	35	33	30	28	25
2CPS-CDLF15-40	4	80	5/10		52	51	49	46	44	40	37	33
2CPS-CDLF15-50	4	80	5/10		65	63	61	59	55	51	47	42
2CPS-CDLF15-60	5.5	80	5/10		78	76	74	71	67	62	57	51
2CPS-CDLF15-70	5.5	80	5/16		92	90	87	83	79	73	67	60
2CPS-CDLF15-80	7.5	80	5/16		106	103	100	96	90	84	77	69
2CPS-CDLF15-90	7.5	80	5/16		120	117	114	109	103	95	87	79
2CPS-CDLF15-100	11	80	5/16		133	130	126	121	114	106	97	88
2CPS-CDLF15-120	11	80	5/25		160	157	152	146	138	128	117	106
2CPS-CDLF15-140	11	80	5/25		187	182	177	169	160	149	137	124
2CPS-CDLF15-170	15	80	5/25		227	222	215	206	195	182	167	151

2 pcs Vertical Pumps Constant Pressure Booster 2CPS 50HZ

● Performance table

Model	Motor power	Inlet/Outlet Pipe	Pressure tank	Flow m³/h	16	20	24	28	32	36	40	44
	KW	DN	L/Bar									
2CPS-CDLF16-20	2.2	80	5/6	Head H(m)	27	26	25	24	22	21	19	16
2CPS-CDLF16-30	3	80	5/6		41	40	38	37	34	32	29	25
2CPS-CDLF16-40	4	80	5/6		54	53	52	49	46	43	38	34
2CPS-CDLF16-50	5.5	80	5/10		68	67	65	62	58	54	48	43
2CPS-CDLF16-60	5.5	80	5/10		82	80	78	74	70	64	58	52
2CPS-CDLF16-70	7.5	80	5/16		96	95	91	87	82	76	68	61
2CPS-CDLF16-80	7.5	80	5/16		110	108	104	99	94	86	77	70
2CPS-CDLF16-100	9.2	80	5/16		138	136	131	125	118	109	97	87
2CPS-CDLF16-120	11	80	5/16		166	162	157	150	141	130	116	105
2CPS-CDLF16-140	15	80	5/25		194	190	184	175	166	152	136	122
2CPS-CDLF16-160	15	80	5/25		222	217	210	200	189	174	156	140

Model	Motor power	Inlet/Outlet Pipe	Pressure tank	Flow m³/h	20	24	28	32	36	40	44	48	52	56
	KW	DN	L/Bar											
2CPS-CDLF20-10	1.1	80	5/6	Head H(m)	13.5	13	12.5	12	11	10	9	8	7	6
2CPS-CDLF20-20	2.2	80	5/6		27	26.5	26	25	24	23	22	20	18	15
2CPS-CDLF20-30	4	80	5/6		40	39.5	39	38	37	35	33	30	27	24
2CPS-CDLF20-40	5.5	80	5/10		54	53	52	51	49	47	44	41	37	33
2CPS-CDLF20-50	5.5	80	5/10		67	66	64	62	60	58	55	50	45	40
2CPS-CDLF20-60	7.5	80	5/16		81	79	77	75	73	70	66	61	55	49
2CPS-CDLF20-70	7.5	80	5/16		95	93	91	89	86	82	77	71	65	58
2CPS-CDLF20-80	9.2	80	5/16		109	107	105	102	99	94	89	82	75	67
2CPS-CDLF20-100	11	80	5/16		136	134	131	128	124	118	111	103	95	85
2CPS-CDLF20-120	15	80	5/25		164	162	158	154	149	142	133	124	114	102
2CPS-CDLF20-140	15	80	5/25		192	189	185	180	174	166	156	145	133	119
2CPS-CDLF20-170	18.5	80	5/25		234	230	225	219	212	202	190	177	162	145

Model	Motor power	Inlet/Outlet Pipe	Pressure tank	Flow m³/h	50	60	70	80	90	100	110
	KW	DN	L/Bar								
2CPS-CDLF45-10-1	3	125	5/6	Head H(m)	20	19	18	17	15	13	11
2CPS-CDLF45-10	4	125	5/6		24	23	22	21	19	18	16
2CPS-CDLF45-20-2	5.5	125	5/6		40	38	36	33	30	27	23
2CPS-CDLF45-20	7.5	125	5/6		48	46	44	42	39	35	31
2CPS-CDLF45-30-2	9.2	125	5/10		63	61	58	54	50	44	38
2CPS-CDLF45-30	11	125	5/10		71	69	66	63	58	53	47
2CPS-CDLF45-40-2	15	125	5/10		87	84	80	75	69	62	54
2CPS-CDLF45-40	15	125	5/10		95	92	88	84	78	71	62
2CPS-CDLF45-50-2	18.5	125	5/16		111	107	102	96	88	80	69
2CPS-CDLF45-50	18.5	125	5/16		119	115	110	105	97	88	78
2CPS-CDLF45-60-2	22	125	5/16		135	130	124	117	108	97	85
2CPS-CDLF45-60	22	125	5/16		143	138	132	125	116	106	93
2CPS-CDLF45-70-2	26	125	5/16		158	152	146	138	127	115	100
2CPS-CDLF45-70	26	125	5/16		166	161	154	146	135	124	109
2CPS-CDLF45-80-2	30	125	5/16		182	175	168	159	146	133	116
2CPS-CDLF45-80	30	125	5/25		190	184	176	167	154	141	124
2CPS-CDLF45-90-2	30	125	5/25		205	198	190	180	166	150	132
2CPS-CDLF45-90	37	125	5/25		214	207	198	188	174	159	140
2CPS-CDLF45-100-2	37	125	5/25		230	221	212	200	185	168	147
2CPS-CDLF45-100	37	125	5/25		238	230	220	209	193	177	155
2CPS-CDLF45-110-2	45	125	5/25		255	246	236	223	206	188	165
2CPS-CDLF45-110	45	125	5/25		263	255	244	232	214	196	173
2CPS-CDLF45-120-2	45	125	5/25		280	270	259	245	226	206	181
2CPS-CDLF45-120	45	125	5/25		289	280	268	255	236	216	190
2CPS-CDLF45-130-2	45	125	5/40		305	294	282	267	247	225	198

2 pcs Vertical Pumps Constant Pressure Booster 2CPS 50HZ

● Performance table

Model	Motor power	Inlet/Outlet Pipe	Pressure tank	Flow m³/h	32	40	48	56	64	72	80
	KW	DN	L/Bar								
2CPS-CDLF32-10-1	1.5	100	5/6	Head H(m)	14	13	12	11	9	7	4
2CPS-CDLF32-10	2.2	100	5/6		18	17	15	14	13	11	8
2CPS-CDLF32-20-2	3	100	5/6		29	28	26	23	20	16	11
2CPS-CDLF32-20	4	100	5/6		36	34	32	29	27	23	18
2CPS-CDLF32-30-2	5.5	100	5/10		47	44	41	38	33	28	21
2CPS-CDLF32-30	5.5	100	5/10		54	51	48	44	40	35	27
2CPS-CDLF32-40-2	7.5	100	5/10		65	62	58	53	46	40	30
2CPS-CDLF32-40	7.5	100	5/10		72	69	65	59	53	47	37
2CPS-CDLF32-50-2	9.2	100	5/16		83	79	74	68	60	52	41
2CPS-CDLF32-50	9.2	100	5/16		90	86	81	74	67	59	47
2CPS-CDLF32-60-2	11	100	5/16		101	97	90	83	74	65	51
2CPS-CDLF32-60	11	100	5/16		108	104	97	90	81	72	57
2CPS-CDLF32-70-2	15	100	5/16		119	114	107	98	88	78	60
2CPS-CDLF32-70	15	100	5/16		126	121	113	105	95	85	67
2CPS-CDLF32-80-2	15	100	5/16		136	131	123	114	102	90	71
2CPS-CDLF32-80	15	100	5/25		144	138	130	120	109	97	77
2CPS-CDLF32-90-2	18.5	100	5/25		154	148	140	129	117	102	82
2CPS-CDLF32-90	18.5	100	5/25		162	156	147	136	124	109	88
2CPS-CDLF32-100-2	18.5	100	5/25		175	166	157	146	131	115	91
2CPS-CDLF32-100	18.5	100	5/25		182	173	164	152	138	122	98
2CPS-CDLF32-110-2	22	100	5/25		193	184	173	164	146	128	102
2CPS-CDLF32-110	22	100	5/25		200	191	180	168	153	135	109
2CPS-CDLF32-120-2	22	100	5/25		211	201	189	178	160	140	113
2CPS-CDLF32-120	22	100	5/25		218	208	196	184	167	147	120
2CPS-CDLF32-130-2	26	100	5/40		230	218	206	193	174	153	124
2CPS-CDLF32-130	26	100	5/40		237	225	213	200	181	160	131
2CPS-CDLF32-140-2	26	100	5/40		247	235	222	210	189	165	135
2CPS-CDLF32-140	30	100	5/40		255	242	229	216	196	172	147
2CPS-CDLF32-150-2	30	100	5/40		266	253	239	224	203	178	145
2CPS-CDLF32-150	30	100	5/40		274	260	246	231	210	185	152
2CPS-CDLF32-160-2	30	100	5/40		284	270	255	240	218	190	156
2CPS-CDLF32-160	30	100	5/40		292	277	262	246	225	197	163

Model	Motor power	Inlet/Outlet Pipe	Pressure tank	Flow m³/h	60	80	100	120	128	140	160
	KW	DN	L/Bar								
2CPS-CDLF64-10-1	4.0	150	5/6	Head H(m)	19	18	16	14	13	11	8
2CPS-CDLF64-10	5.5	150	5/6		27	25	23	21	20	18	15
2CPS-CDLF64-20-2	7.5	150	5/6		39	36	33	29	27	23	17
2CPS-CDLF64-20-1	11	150	5/10		46	44	40	36	34	30	24
2CPS-CDLF64-20	11	150	5/10		53	51	47	43	41	37	30
2CPS-CDLF64-30-2	15	150	5/10		66	62	56	50	47	41	32
2CPS-CDLF64-30-1	15	150	5/10		73	69	63	57	54	48	39
2CPS-CDLF64-30	18.5	150	5/10		80	76	70	64	61	55	46
2CPS-CDLF64-40-2	18.5	150	5/16		92	87	80	71	67	60	47
2CPS-CDLF64-40-1	22	150	5/16		100	94	87	78	74	67	54
2CPS-CDLF64-40	22	150	5/16		107	101	94	85	81	74	61
2CPS-CDLF64-50-2	26	150	5/16		121	114	105	95	89	80	64
2CPS-CDLF64-50-1	26	150	5/16		128	121	112	102	96	87	71
2CPS-CDLF64-50	30	150	5/25		136	129	119	109	103	94	78
2CPS-CDLF64-60-2	30	150	5/25		150	142	131	118	111	101	81
2CPS-CDLF64-60-1	37										

2 pcs Vertical Pumps Constant Pressure Booster 2CPS 50HZ

● Performance table

Model	Motor power	Inlet/Outlet Pipe	Pressure tank	Flow m³/h	100	120	140	160	180	200	220
	KW	DN	L/Bar								
2CPS-CDLF90-10-1	5.5	150	5/6	Head H(m)	22	19	17	16	13	10	6
2CPS-CDLF90-10	7.5	150	5/6		25	24	22	21	19	16	12
2CPS-CDLF90-20-2	11	150	5/6		41	39	36	32	28	22	15
2CPS-CDLF90-20	15	150	5/10		53	50	47	44	40	36	30
2CPS-CDLF90-30-2	18.5	150	5/10		68	65	60	55	49	41	32
2CPS-CDLF90-30	22	150	5/10		81	77	72	67	62	55	48
2CPS-CDLF90-40-2	26	150	5/10		98	93	87	80	72	62	50
2CPS-CDLF90-40	30	150	5/10		110	105	100	92	84	76	66
2CPS-CDLF90-50-2	37	150	5/16		126	120	113	104	93	81	68
2CPS-CDLF90-50	37	150	5/25		139	131	124	115	106	94	83
2CPS-CDLF90-60-2	45	150	5/25		155	148	139	129	117	102	86
2CPS-CDLF90-60	45	150	5/25		168	160	150	141	130	117	103

Model	Motor power	Inlet/Outlet Pipe	Pressure tank	Flow m³/h	120	140	160	180	200	220	240	260	280	300
	KW	DN	L/Bar											
2CPS-CDLF120-10	11	200	5/6	Head H(m)	22	21.8	21.6	21	20.5	19.5	18.5	17	16	15
2CPS-CDLF120-20-2	15	200	5/6		34	33.6	33	31	30.2	30	28.5	27	25	24
2CPS-CDLF120-20-1	18.5	200	5/6		41	40	39.5	38.5	37	36.5	34.5	32.5	30	27.5
2CPS-CDLF120-20	22	200	5/10		46	45	44.5	43.5	42.4	41	40	38	36	33.5
2CPS-CDLF120-30-2	26	200	5/10		57	56	55	53.5	52	51	49	46.5	43.5	41
2CPS-CDLF120-30-1	30	200	5/10		64	63	62	60	58.5	57.5	55.5	52	49	46
2CPS-CDLF120-30	30	200	5/10		69.5	68.5	67.5	66	64.4	62.5	61	57.5	54.5	51
2CPS-CDLF120-40-2	37	200	5/10		80.5	79	78	76	73.5	72	69	66	61.5	58
2CPS-CDLF120-40-1	37	200	5/16		87	86	84.5	82	80	78	76	72	68	64.5
2CPS-CDLF120-40	45	200	5/16		92.5	91	90	88	85.5	83	81	77	73	68.5
2CPS-CDLF120-50-2	45	200	5/16		104.5	103	101	99	96	93	90	85.5	80.5	75.5
2CPS-CDLF120-50-1	45	200	5/16		110.5	109	107.5	105	102	100	97	92	86.5	83
2CPS-CDLF120-50	55	200	5/16		115.5	114	113	110	107.5	104.5	101.5	96	91	86
2CPS-CDLF120-60-2	55	200	5/16		128	125.5	123	121	117.3	113.5	110	104.5	98.5	92.5
2CPS-CDLF120-60-1	55	200	5/16		134	132	130.5	127	124	121	118	111	105	100
2CPS-CDLF120-6	75	200	5/25		139	137	135	132	128.8	126	123	116	110	104
2CPS-CDLF120-70-2	75	200	5/25	151	148	145.5	143	138.6	134	130	123.5	116.5	109	
2CPS-CDLF120-70-1	75	200	5/25	156.5	154	152	148.5	144.5	141	137.5	130	123	116.5	
2CPS-CDLF120-70	75	200	5/25	162.5	160.5	158.5	155	151	148	145	137	129	123	

2 pcs Vertical Pumps Constant Pressure Booster 2CPS 50HZ

● Performance table

Model	Motor power	Inlet/Outlet Pipe	Pressure tank	Flow m³/h	160	180	200	220	240	260	280	300	320	340	360
	KW	DN	L/Bar												
2CPS-CDLF150-10-1	11	200	5/6	Head H(m)	18.3	17.8	17.3	17	16	15	14	12.5	11	10	8.5
2CPS-CDLF150-10	15	200	5/6		24	23	22.5	22	21.5	20.5	20	18.5	17	16	15
2CPS-CDLF150-20-2	18.5	200	5/6		37	35.5	34	33	32	31	29	27.5	26	23	21
2CPS-CDLF150-20-1	22	200	5/10		44.3	43	42	40	39	38.5	37.5	35	33	30	27
2CPS-CDLF150-20	26	200	5/10		50	49	48	47	45.5	44	42	40	37	34	32
2CPS-CDLF150-30-2	30	200	5/10		63.5	61	59	57.5	56	54.5	53	49	45.5	42	39
2CPS-CDLF150-30-1	37	200	5/10		70	68	67	65	63	62	60	56	53	49	45
2CPS-CDLF150-30	37	200	5/10		78	76.5	75	73	70.5	68	66	63	59	55	50.5
2CPS-CDLF150-40-2	45	200	5/16		89	87	84	81.5	79	77	74.5	70.5	65.5	60	56
2CPS-CDLF150-40-1	45	200	5/16		96.5	94	91.5	89	86.5	84	81.5	77	72.5	67	62
2CPS-CDLF150-40	55	200	5/16		104	102	100	97	95	91	88	84	79.5	74	68
2CPS-CDLF150-50-2	55	200	5/16		115.5	112	109	106	102.5	100	97	92	86	79	73.5
2CPS-CDLF150-50-1	75	200	5/16		122.5	119.5	117	113.5	111.5	107.5	104.5	99	93.5	87	80
2CPS-CDLF150-50	75	200	5/16		130	127.5	125	121	119	115	111.5	106.5	101	94.5	86.5
2CPS-CDLF150-60-2	75	200	5/16		140	137	133	130	126	121	118	112	106	98	91
2CPS-CDLF150-60-1	75	200	5/25		148.5	145	141.7	137.5	135	131	127	120.5	114.5	106.5	97.5
2CPS-CDLF150-60	75	200	5/25		157	153	149	145	142	139.5	137	130	123.5	116	109

Model	Motor power	Inlet/Outlet Pipe	Pressure tank	Flow m³/h	200	240	280	320	360	400	440	480
	KW	DN	L/Bar									
2CPS-CDLF200-10-B	18.5	250	5/6	Head H(m)	25.5	25	24	23	21.5	20	18	15.5
2CPS-CDLF200-10-A	22	250	5/6		29	28.5	27.5	26.5	25.5	24	22	20
2CPS-CDLF200-10	30	250	5/6		38.5	38	37.5	36.5	35	34	32.5	30
2CPS-CDLF200-20-2B	37	250	5/10		53	51	49	47	44	41	37	32
2CPS-CDLF200-20-2A	45	250	5/10		59.5	58	56	54	52.5	49	44.5	40.5
2CPS-CDLF200-20-A	55	250	5/10		69	68	66	64	62	59	55.5	51
2CPS-CDLF200-20	55	250	5/10		78.5	77.5	76	74	71.5	69	66	61.5
2CPS-CDLF200-30-2B	75	250	5/16		91.5	89	86.5	83.5	79	75	70	63
2CPS-CDLF200-30-A-B	75	250	5/16		95	93	90	87	83.5	79	73.5	67
2CPS-CDLF200-30-2A	75	250	5/16		99.5	97.5	94.5	91.5	89	84	78.5	72
2CPS-CDLF200-30-B	75	250	5/16		104.5	102.5	100	97	93	89	84.5	77.5
2CPS-CDLF200-30-A	75	250	5/16		108	106	103.5	100.5	97.5	93	88	81.5
2CPS-CDLF200-30	90	250	5/16		117.5	116	113.5	110.5	107	103	99	92
2CPS-CDLF200-40-2B	90	250	5/16		131.5	129	125.5	121	115.5	110	103.5	94
2CPS-CDLF200-40-2A	110	250	5/16		138.5	136	132	128	124	118	111	102.5
2CPS-CDLF200-40-A	110	250	5/25		148	145.5	142.5	138	134	128	122	113
2CPS-CDLF200-40	110	250	5/25	157.5	155.5	152.5	148	143.5	138	132.5	123.5	

3 pcs Vertical Pumps Constant Pressure Booster 3CPS 50HZ

Main Components



No.	Name	Quantity	Remark
1	Vertical multistage pump	3	SS304/SS316
2	VFD	3	IP65 protection
3	Pressure transmitter	3	0~16bar range
4	Control cabinet with HMI	1	10" HMI
5	Inlet and outlet pipe	one set	SS304
6	Pressure guage	2	
7	Valve	9	Ball valve/butterfly valve/check valve
8	Pressure tank	1	5L
9	Base frame	1	Carbon steel

3 pcs Vertical Pumps Constant Pressure Booster 3CPS 50HZ

● Performance table

Model	Motor power		Inlet/Outlet Pipe		Pressure tank		Flow m³/h	Head H(m)											
	KW		DN		L/Bar			3.6	4.8	6	7.2	8.4	9	9.6	10.8	12			
3CPS3-20	0.37		50		5/6		Flow m³/h	12.5	11.5	11	10.5	10	9	8	7	6			
3CPS3-30	0.37		50		5/6			19	18.5	17.5	16.5	15	14	13	11	9			
3CPS3-40	0.37		50		5/6			25	24	23	21.5	20	19	18	15	12			
3CPS3-50	0.37		50		5/6			31	30	29	27	25	23	22	19	16			
3CPS3-60	0.55		50		5/6			36	35	34	32	30	28	27	23	19			
3CPS3-70	0.55		50		5/10			43	41	39	37	34	32	31	27	22			
3CPS3-80	0.75		50		5/10			49	47	45	43	39	37	35	31	25			
3CPS3-90	0.75		50		5/10			55	53	51	48	45	42	40	35	28			
3CPS3-100	0.75		50		5/10			61	59	57	54	50	47	45	39	31			
3CPS3-110	1.1		50		5/10			67	64	61	58	54	51	49	42	34			
3CPS3-120	1.1		50		5/10			73	70	67	63	58	55	52	45	37			
3CPS3-130	1.1		50		5/16			78	76	73	69	64	60	57	49	40			
3CPS3-150	1.1		50		5/16			90	88	84	79	73	69	66	57	46			
3CPS3-170	1.5		50		5/16			103	100	96	90	83	79	75	64	52			
3CPS3-190	1.5		50		5/16			115	112	107	100	92	88	83	72	58			
3CPS3-210	2.2		50		5/16			128	124	119	112	102	98	91	79	64			
3CPS3-230	2.2		50		5/25			140	135	130	122	112	107	100	86	70			
3CPS3-250	2.2		50		5/25			151	147	141	131	122	116	109	94	76			
3CPS3-270	2.2		50		5/25			164	159	152	143	132	124	117	101	82			
3CPS3-290	2.2		50		5/25			175	170	163	153	142	133	126	109	88			
3CPS3-310	3.0		50		5/25			187	182	175	165	153	142	135	116	94			
3CPS3-330	3.0		50		5/25			199	194	187	176	163	151	145	125	100			
3CPS3-360	3.0		50		5/25			218	212	204	192	178	168	159	137	109			

Model	Motor power		Inlet/Outlet Pipe		Pressure tank		Flow m³/h	Head H(m)						
	KW		DN		L/Bar			4.5	6	9	12	15	18	21
3CPS4-20	0.37		65		5/6		Flow m³/h	19	18	17	15	13	10	8
3CPS4-30	0.55		65		5/6			28	27	26	24	20	18	13
3CPS4-40	0.75		65		5/6			38	36	34	32	27	24	19
3CPS4-50	1.1		65		5/10			47	45	43	40	34	31	23
3CPS4-60	1.1		65		5/10			56	54	52	48	41	37	28
3CPS4-70	1.5		65		5/10			66	63	61	56	48	43	33
3CPS4-80	1.5		65		5/10			74	72	70	64	55	50	38
3CPS4-100	2.2		65		5/16			96	90	87	81	71	62	48
3CPS4-120	2.2		65		5/16			114	108	104	95	85	75	58
3CPS4-140	3		65		5/16			136	126	122	112	101	89	68
3CPS4-160	3		65		5/25			152	144	140	129	115	101	78
3CPS4-190	4		65		5/25			183	171	168	153	137	122	93
3CPS4-220	4		65		5/25			211	200	192	178	160	138	108

● Performance table

Model	Motor power		Inlet/Outlet Pipe		Pressure tank		Flow m³/h	Head H(m)									
	KW		DN		L/Bar			1.2	1.8	2.4	3	3.6	4.2	4.8	5.4		
3CPS1-20	0.37		50		5/6		Flow m³/h	13	12.5	12	11.5	11	10.5	10	9.5		
3CPS1-30	0.37		50		5/6			19	18	17.5	17	16.5	16	15	14		
3CPS1-40	0.37		50		5/6			24	23.5	23	22.5	21.5	21	19	18		
3CPS1-50	0.37		50		5/6			30	29.6	29	28	27	26	24	22		
3CPS1-60	0.37		50		5/10			36	35.5	35	33.5	33	31	28	26		
3CPS1-70	0.37		50		5/10			42	41	40.5	39	38	36	33	30		
3CPS1-80	0.55		50		5/10			48	47	46	45	43	41	38	34		
3CPS1-90	0.55		50		5/10			54	53	52	51	49	46	43	39		
3CPS1-100	0.55		50		5/10			60	59	58	57	54	51	48	43		
3CPS1-110	0.55		50		5/10			66	65	63	61	59	56	52	47		
3CPS1-120	0.75		50		5/10			72	71	69	67	64	61	57	51		
3CPS1-130	0.75		50		5/10			78	77	75	73	69	66	62	55		
3CPS1-150	0.75		50		5/16			89	88	86	84	79	76	71	63		
3CPS1-170	1.1		50		5/16			101	99	97	95	89	86	80	71		
3CPS1-190	1.1		50		5/16			113	110	108	106	99	96	68	79		
3CPS1-210	1.1		50		5/16			124	122	120	117	110	106	98	87		
3CPS1-230	1.1		50		5/25			137	133	131	128	121	116	107	96		
3CPS1-250	1.5		50		5/25			149	145	143	139	131	126	116	104		
3CPS1-270	1.5		50		5/25			161	157	155	150	141	136	125	112		
3CPS1-300	1.5		50		5/25			178	175	171	166	157	150	139	124		
3CPS1-330	2.2		50		5/25			196	192	188	183	173	165	154	137		
3CPS1-360	2.2		50		5/25			214	210	205	200	190	181	169	151		

Model	Motor power		Inlet/Outlet Pipe		Pressure tank		Flow m³/h	Head H(m)									
	KW		DN		L/Bar			3	3.6	4.8	6	7.2	8.4	9.6	10.5		
3CPS2-20	0.37		50		5/6		Flow m³/h	18	17	16	15	13	12	10	8		
3CPS2-30	0.37		50		5/6			27	26	24	22	20	18	15	12		
3CPS2-40	0.55		50		5/6			36	35	33	30	26	24	20	16		
3CPS2-50	0.55		50		5/10			45	43	40	37	33	30	24	20		
3CPS2-60	0.75		50		5/10			53	52	50	45	40	36	30	24		
3CPS2-70	0.75		50		5/10			63	61	57	52	47	41	35	28		
3CPS2-90	1.1		50		5/10			80	78	73	67	61	54	45	37		
3CPS2-110	1.1		50		5/16			98	95	89	82	73	64	54	44		
3CPS2-130	1.5		50		5/16			116	114	106	98	89	78	65	52		
3CPS2-150	1.5		50		5/25			134	130	123	112	100	90	73	60		
3CPS2-180	2.2		50		5/25			161	157	148	136	121	108	91	76		
3CPS2-220	2.2		50		5/25			197	192	180	165	148	130	110	90		
3CPS2-260	3		50		5/25			232	228	214	198	179	158	130	110		

3 pcs Vertical Pumps Constant Pressure Booster 3CPS 50HZ

● Performance table

Model	Motor power	Inlet/Outlet Pipe	Pressure tank	Flow m³/h	9	12	15	18	21	24
	KW	DN	L/Bar							
3CPS5-20	0.37	65	5/6	Head H(m)	12	11	10	9	7	4
3CPS5-30	0.55	65	5/6		18	17	15	14	11	9
3CPS5-40	0.55	65	5/6		24	22	20	18	15	12
3CPS5-50	0.75	65	5/6		31	28	26	23	19	16
3CPS5-60	1.1	65	5/6		37	35	32	27	23	19
3CPS5-70	1.1	65	5/10		43	41	37	33	27	22
3CPS5-80	1.1	65	5/10		50	47	43	38	32	25
3CPS5-90	1.5	65	5/10		56	53	48	43	37	29
3CPS5-100	1.5	65	5/10		62	59	54	48	41	34
3CPS5-110	2.2	65	5/10		68	64	59	53	46	38
3CPS5-120	2.2	65	5/10		74	70	65	58	50	41
3CPS5-130	2.2	65	5/10		80	76	70	62	54	44
3CPS5-140	2.2	65	5/16		86	81	75	68	58	47
3CPS5-150	2.2	65	5/16		92	87	81	73	63	51
3CPS5-160	2.2	65	5/16		99	93	87	79	69	55
3CPS5-180	3	65	5/16		111	106	100	90	79	63
3CPS5-200	3	65	5/16		123	118	112	102	89	71
3CPS5-220	4	65	5/16		135	130	123	112	99	79
3CPS5-240	4	65	5/25		147	142	134	122	107	87
3CPS5-260	4	65	5/25		159	155	146	133	116	94
3CPS5-290	4	65	5/25	181	174	164	149	131	107	
3CPS5-320	5.5	65	5/25	200	193	181	164	145	120	

Model	Motor power	Inlet/Outlet Pipe	Pressure tank	Flow m³/h	15	18	21	24	27	30	33	36
	KW	DN	L/Bar									
3CPS8-20	0.75	80	5/6	Head H(m)	20	19.5	19	18	17	16	14	13
3CPS8-30	1.1	80	5/6		30	29.5	28.5	27	25	24	21	19
3CPS8-40	1.5	80	5/6		41	39.5	38	36	34	32	28	26
3CPS8-50	2.2	80	5/10		52	50	48	45	42	40	36	32
3CPS8-60	2.2	80	5/10		62	60	57	54	51	48	43	39
3CPS8-80	3	80	5/10		83	80	77	73	69	65	58	52
3CPS8-100	4	80	5/10		104	100	97	92	87	81	73	65
3CPS8-120	4	80	5/16		124	120	116	111	104	92	87	78
3CPS8-140	5.5	80	5/16		145	141	136	130	122	113	102	92
3CPS8-160	5.5	80	5/16		166	161	156	148	139	130	118	106
3CPS8-180	7.5	80	5/25		187	182	175	167	157	146	134	120
3CPS8-200	7.5	80	5/25		208	202	195	186	175	163	150	135

3 pcs Vertical Pumps Constant Pressure Booster 3CPS 50HZ

● Performance table

Model	Motor power	Inlet/Outlet Pipe	Pressure tank	Flow m³/h	15	18	21	24	27	30	33	36	39
	KW	DN	L/Bar										
3CPS10-1	0.75	80	5/6	Head H(m)	9.7	9.3	8.9	8.3	7.7	7	6	5	4
3CPS10-2	0.75	80	5/6		19.5	19	18	17	16	15	13.5	11.5	10
3CPS10-3	1.1	80	5/6		29.5	29	28	27	25	23	21	18	16
3CPS10-4	1.5	80	5/6		39.5	38.5	37.5	36	34	31	28	25	22
3CPS10-5	2.2	80	5/10		49.5	48.5	47	44	42	39	35	32	28
3CPS10-6	2.2	80	5/10		60	58	56	54	51	48	43	39	34
3CPS10-7	3	80	5/10		70	68	66	63	60	56	51	45	39
3CPS10-8	3	80	5/16		80	78	75	73	69	64	58	52	44
3CPS10-9	3	80	5/16		90	87	85	81	77	72	66	58	50
3CPS10-10	4	80	5/16		100	97	95	90	85	80	74	66	56
3CPS10-12	4	80	5/16		120	117	114	109	104	96	89	79	68
3CPS10-14	5.5	80	5/16		140	137	134	129	122	113	103	92	79
3CPS10-16	5.5	80	5/25		160	158	153	148	140	129	119	106	91
3CPS10-18	7.5	80	5/25		180	177	172	166	156	145	133	119	102
3CPS10-20	7.5	80	5/25		200	196	191	184	173	162	147	132	114
3CPS10-22	7.5	80	5/25		220	216	210	202	190	178	162	145	126

Model	Motor power	Inlet/Outlet Pipe	Pressure tank	Flow m³/h	21	24	27	30	33	36	39	42	45	48
	KW	DN	L/Bar											
3CPS12-20	1.5	100	5/6	Head H(m)	23.5	23	22.5	22	21	20	18.5	17	15.5	14
3CPS12-30	2.2	100	5/6		35.5	35	34	33	31.5	30	28	26	23.5	21
3CPS12-40	3	100	5/6		47	46	45	44	42	40	37	34	31	28
3CPS12-50	3	100	5/10		59.5	58	56.5	55	52.5	50	46.5	43	39	35
3CPS12-60	4	100	5/10		71.5	70	68	66	63	60	56	52	47	42
3CPS12-70	5.5	100	5/16		83.5	82	79.5	77	73.5	70	65.5	61	55	49
3CPS12-80	5.5	100	5/16		95.5	94	91	88	84	80	75	70	63	56
3CPS12-90	5.5	100	5/16		108	106	103	100	95.5	91	85	79	71.5	64
3CPS12-100	7.5	100	5/16		120	118	114.5	111	106	101	94.5	88	80	72
3CPS12-120	7.5	100	5/25		143.5	141	137	133	127	121	113.5	106	96	86
3CPS12-140	9.2	100	5/25		168	165	160	155	148	141	132.5	124	112	100
3CPS12-160	11	100	5/25		192.5	189	183.5	178	170	162	152	142	128.5	115
3CPS12-180	11	100	5/25		217	213	207.5	202	192.5	183	171.5	160	145	130

Model	Motor power	Inlet/Outlet Pipe	Pressure tank	Flow m³/h	16	20	24	28	32	36	40	44
	KW	DN	L/Bar									
2CPS15-10	1.1	100	5/6	Head H(m)	12	11.5	11	10.5	9.5	8.5	7.5	6.5
2CPS15-20	2.2	100	5/6		25	24.5	24	23	21.5	20	18	16
2CPS15-30	3	100	5/6		39	38	37	35	33	30	28	25
2CPS15-40	4	100	5/10		52	51	49	46	44	40	37	33
2CPS15-50	4	100	5/10		65	63	61	59	55	51	47	42
2CPS15-60	5.5	100	5/10		78	76	74	71	67	62	57	51
2CPS15-70	5.5	100	5/16		92	90	87	83	79	73	67	60
2CPS15-80	7.5	100	5/16		106	103	100	96	90	84	77	69
2CPS15-90	7.5	100	5/16		120	117	114	109	103	95	87	79
2CPS15-100	11	100	5/16		133	130	126	121	114	106	97	88
2CPS15-120	11	100	5/25		160	157	152	146	138	128	117	106
2CPS15-140	11	100	5/25		187	182	177	169	160	149	137	124
2CPS15-170	15	100	5/25		227	222	215	206	195	182	167	151

3 pcs Vertical Pumps Constant Pressure Booster 3CPS 50HZ

● Performance table

Model	Motor power	Inlet/Outlet Pipe	Pressure tank	Flow m ³ /h	24	30	36	42	48	54	60	66
	KW	DN	L/Bar									
3CPS16-20	2.2	100	5/6	Head H(m)	27	26	25	24	22	21	19	16
3CPS16-30	3	100	5/6		41	40	38	37	34	32	29	25
3CPS16-40	4	100	5/6		54	53	52	49	46	43	38	34
3CPS16-50	5.5	100	5/10		68	67	65	62	58	54	48	43
3CPS16-60	5.5	100	5/10		82	80	78	74	70	64	58	52
3CPS16-70	7.5	100	5/16		96	95	91	87	82	76	68	61
3CPS16-80	7.5	100	5/16		110	108	104	99	94	86	77	70
3CPS16-100	9.2	100	5/16		138	136	131	125	118	109	97	87
3CPS16-120	11	100	5/16		166	162	157	150	141	130	116	105
3CPS16-140	15	100	5/25		194	190	184	175	166	152	136	122
3CPS16-160	15	100	5/25		222	217	210	200	189	174	156	140

Model	Motor power	Inlet/Outlet Pipe	Pressure tank	Flow m ³ /h	30	36	42	48	54	60	66	72	78	84
	KW	DN	L/Bar											
3CPS20-10	1.1	100	5/6	Head H(m)	13.5	13	12.5	12	11	10	9	8	7	6
3CPS20-20	2.2	100	5/6		27	26.5	26	25	24	23	22	20	18	15
3CPS20-30	4	100	5/6		40	39.5	39	38	37	35	33	30	27	24
3CPS20-40	5.5	100	5/10		54	53	52	51	49	47	44	41	37	33
3CPS20-50	5.5	100	5/10		67	66	64	62	60	58	55	50	45	40
3CPS20-60	7.5	100	5/16		81	79	77	75	73	70	66	61	55	49
3CPS20-70	7.5	100	5/16		95	93	91	89	86	82	77	71	65	58
3CPS20-80	9.2	100	5/16		109	107	105	102	99	94	89	82	75	67
3CPS20-100	11	100	5/16		136	134	131	128	124	118	111	103	95	85
3CPS20-120	15	100	5/25		164	162	158	154	149	142	133	124	114	102
3CPS20-140	15	100	5/25		192	189	185	180	174	166	156	145	133	119
3CPS20-170	18.5	100	5/25		234	230	225	219	212	202	190	177	162	145

Model	Motor power	Inlet/Outlet Pipe	Pressure tank	Flow m ³ /h	75	90	105	120	135	150	165
	KW	DN	L/Bar								
3CPS45-10-1	3	150	5/6	Head H(m)	20	19	18	17	15	13	11
3CPS45-10	4	150	5/6		24	23	22	21	19	18	16
3CPS45-20-2	5.5	150	5/6		40	38	36	33	30	27	23
3CPS45-20	7.5	150	5/6		48	46	44	42	39	35	31
3CPS45-30-2	9.2	150	5/10		63	61	58	54	50	44	38
3CPS45-30	11	150	5/10		71	69	66	63	58	53	47
3CPS45-40-2	15	150	5/10		87	84	80	75	69	62	54
3CPS45-40	15	150	5/10		95	92	88	84	78	71	62
3CPS45-50-2	18.5	150	5/16		111	107	102	96	88	80	69
3CPS45-50	18.5	150	5/16		119	115	110	105	97	88	78
3CPS45-60-2	22	150	5/16		135	130	124	117	108	97	85
3CPS45-60	22	150	5/16		143	138	132	125	116	106	93
3CPS45-70-2	26	150	5/16		158	152	146	138	127	115	100
3CPS45-70	26	150	5/16		166	161	154	146	135	124	109
3CPS45-80-2	30	150	5/16		182	175	168	159	146	133	116
3CPS45-80	30	150	5/25		190	184	176	167	154	141	124
3CPS45-90-2	30	150	5/25		205	198	190	180	166	150	132
3CPS45-90	37	150	5/25		214	207	198	188	174	159	140
3CPS45-100-2	37	150	5/25		230	221	212	200	185	168	147
3CPS45-100	37	150	5/25		238	230	220	209	193	177	155
3CPS45-110-2	45	150	5/25		255	248	236	223	206	188	165
3CPS45-110	45	150	5/25		263	255	244	232	214	196	173
3CPS45-120-2	45	150	5/25		280	270	259	245	226	206	181
3CPS45-120	45	150	5/25		289	280	268	255	236	216	190
3CPS45-130-2	45	150	5/40	305	294	282	267	247	225	198	

3 pcs Vertical Pumps Constant Pressure Booster 3CPS 50HZ

● Performance table

Model	Motor power	Inlet/Outlet Pipe	Pressure tank	Flow m ³ /h	48	60	72	84	96	108	120
	KW	DN	L/Bar								
3CPS32-10-1	1.5	125	5/6	Head H(m)	14	13	12	11	9	7	4
3CPS32-10	2.2	125	5/6		18	17	15	14	13	11	8
3CPS32-20-2	3	125	5/6		29	28	26	23	20	16	11
3CPS32-20	4	125	5/6		36	34	32	29	27	23	18
3CPS32-30-2	5.5	125	5/10		47	44	41	38	33	28	21
3CPS32-30	5.5	125	5/10		54	51	48	44	40	35	27
3CPS32-40-2	7.5	125	5/10		65	62	58	53	46	40	30
3CPS32-40	7.5	125	5/10		72	69	65	59	53	47	37
3CPS32-50-2	9.2	125	5/16		83	79	74	68	60	52	41
3CPS32-50	9.2	125	5/16		90	86	81	74	67	59	47
3CPS32-60-2	11	125	5/16		101	97	90	83	74	65	51
3CPS32-60	11	125	5/16		108	104	97	90	81	72	57
3CPS32-70-2	15	125	5/16		119	114	107	98	88	78	60
3CPS32-70	15	125	5/16		126	121	113	105	95	85	67
3CPS32-80-2	15	125	5/16		136	131	123	114	102	90	71
3CPS32-80	15	125	5/25		144	138	130	120	109	97	77
3CPS32-90-2	18.5	125	5/25		154	148	140	129	117	102	82
3CPS32-90	18.5	125	5/25		162	156	147	136	124	109	88
3CPS32-100-2	18.5	125	5/25		175	166	157	146	131	115	91
3CPS32-100	18.5	125	5/25		182	173	164	152	138	122	98
3CPS32-110-2	22	125	5/25		193	184	173	164	146	128	102
3CPS32-110	22	125	5/25		200	191	180	168	153	135	109
3CPS32-120-2	22	125	5/25		211	201	189	178	160	140	113
3CPS32-120	22	125	5/25		218	208	196	184	167	147	120
3CPS32-130-2	26	125	5/40		230	218	206	193	174	153	124
3CPS32-130	26	125	5/40		237	225	213	200	181	160	131
3CPS32-140-2	26	125	5/40		247	235	222	210	189	165	135
3CPS32-140	30	125	5/40		255	242	229	216	196	172	147
3CPS32-150-2	30	125	5/40		266	253	239	224	203	178	145
3CPS32-150	30	125	5/40		274	260	246	231	210	185	152
3CPS32-160-2	30	125	5/40	284	270	255	240	218	190	156	
3CPS32-160	30	125	5/40	292	277	262	246	225	197	163	

Model	Motor power	Inlet/Outlet Pipe	Pressure tank	Flow m ³ /h	90	120	150	180	192	210	240
	KW	DN	L/Bar								
3CPS64-10-1	4.0	200	5/6	Head H(m)	19	18	16	14	13	11	8
3CPS64-10	5.5	200	5/6		27	25	23	21	20	18	15
3CPS64-20-2	7.5	200	5/6		39	36	33	29	27	23	17
3CPS64-20-1	11	200	5/10		46	44	40	36	34	30	24
3CPS64-20	11	200	5/10		53	51	47	43	41	37	30
3CPS64-30-2	15	200	5/10		66	62	56	50	47	41	32
3CPS64-30-1	15	200	5/10		73	69	63	57	54	48	39
3CPS64-30	18.5	200	5/10		80	76	70	64	61	55	46
3CPS64-40-2	18.5	200	5/16		92	87	80	71	67	60	47
3CPS64-40-1	22	200	5/16		100	94	87	78	74	67	54
3CPS64-40	22	200	5/16		107	101	94	85	81	74	61
3CPS64-50-2	26	200	5/16		121	114	105	95	89	80	64
3CPS64-50-1	26	200	5/16		128	121	112	102	96	87	71
3CPS64-50	30	200	5/25		136	129	119	109	103	94	78
3CPS64-60-2	30	200	5/25		150	142	131	118	111	101	81
3CPS64-60-1	37	200	5/25		157	149	138	125	118	108	88
3CPS64-60	37	200	5/25		164	156	145	132	125	115	95
3CPS64-70-2	37	200	5/25		179	169	156	141	133	121	99
3CPS64-70-1	37	200	5/25		186	176	163	148	141	128	106
3CPS64-70	45	200	5/25		193	183	170	155	148	135	112
3CPS64-80-2	45	200	5/25		207	196	182	164	156	142	116
3CPS64-80-1	45	200	5/25		215	203	189	171	163	149	123

3 pcs Vertical Pumps Constant Pressure Booster 3CPS 50HZ

● Performance table

Model	Motor power	Inlet/Outlet Pipe	Pressure tank	Flow m³/h	150	180	210	240	270	300	330
	KW	DN	L/Bar								
3CPS90-10-1	5.5	200	5/6	Head H(m)	22	19	17	16	13	10	6
3CPS90-10	7.5	200	5/6		25	24	22	21	19	16	12
3CPS90-20-2	11	200	5/6		41	39	36	32	28	22	15
3CPS90-20	15	200	5/10		53	50	47	44	40	36	30
3CPS90-30-2	18.5	200	5/10		68	65	60	55	49	41	32
3CPS90-30	22	200	5/10		81	77	72	67	62	55	48
3CPS90-40-2	26	200	5/10		98	93	87	80	72	62	50
3CPS90-40	30	200	5/10		110	105	100	92	84	76	66
3CPS90-50-2	37	200	5/16		128	120	113	104	93	81	68
3CPS90-50	37	200	5/25		139	131	124	115	106	94	83
3CPS90-60-2	45	200	5/25		155	148	139	129	117	102	86
3CPS90-60	45	200	5/25		168	160	150	141	130	117	103

Model	Motor power	Inlet/Outlet Pipe	Pressure tank	Flow m³/h	180	210	240	270	300	330	360	390	420	450
	KW	DN	L/Bar											
3CPS120-10	11	250	5/6	Head H(m)	22	21.8	21.6	21	20.5	19.5	18.5	17	16	15
3CPS120-20-2	15	250	5/6		34	33.6	33	31	30.2	30	28.5	27	25	24
3CPS120-20-1	18.5	250	5/6		41	40	39.5	38.5	37	36.5	34.5	32.5	30	27.5
3CPS120-20	22	250	5/10		46	45	44.5	43.5	42.4	41	40	38	36	33.5
3CPS120-30-2	26	250	5/10		57	56	55	53.5	52	51	49	46.5	43.5	41
3CPS120-30-1	30	250	5/10		64	63	62	60	58.5	57.5	55.5	52	49	46
3CPS120-30	30	250	5/10		69.5	68.5	67.5	66	64.4	62.5	61	57.5	54.5	51
3CPS120-40-2	37	250	5/10		80.5	79	78	76	73.5	72	69	66	61.5	58
3CPS120-40-1	37	250	5/16		87	86	84.5	82	80	78	76	72	68	64.5
3CPS120-40	45	250	5/16		92.5	91	90	88	85.5	83	81	77	73	68.5
3CPS120-50-2	45	250	5/16		104.5	103	101	99	96	93	90	85.5	80.5	75.5
3CPS120-50-1	45	250	5/16		110.5	109	107.5	105	102	100	97	92	86.5	83
3CPS120-50	55	250	5/16		115.5	114	113	110	107.5	104.5	101.5	96	91	86
3CPS120-60-2	55	250	5/16		128	125.5	123	121	117.3	113.5	110	104.5	98.5	92.5
3CPS120-60-1	55	250	5/16		134	132	130.5	127	124	121	118	111	105	100
3CPS120-6	75	250	5/25		139	137	135	132	128.8	126	123	116	110	104
3CPS120-70-2	75	250	5/25		151	148	145.5	143	138.6	134	130	123.5	116.5	109
3CPS120-70-1	75	250	5/25		156.5	154	152	148.5	144.5	141	137.5	130	123	116.5
3CPS120-70	75	250	5/25		162.5	160.5	158.5	155	151	148	145	137	129	123

3 pcs Vertical Pumps Constant Pressure Booster 3CPS 50HZ

● Performance table

Model	Motor power	Inlet/Outlet Pipe	Pressure tank	Flow m³/h	240	270	300	330	360	390	420	450	480	510	540
	KW	DN	L/Bar												
3CPS150-10-1	11	250	5/6	Head H(m)	18.3	17.8	17.3	17	16	15	14	12.5	11	10	8.5
3CPS150-10	15	250	5/6		24	23	22.5	22	21.5	20.5	20	18.5	17	16	15
3CPS150-20-2	18.5	250	5/6		37	35.5	34	33	32	31	29	27.5	26	23	21
3CPS150-20-1	22	250	5/10		44.3	43	42	40	39	38.5	37.5	35	33	30	27
3CPS150-20	26	250	5/10		50	49	48	47	45.5	44	42	40	37	34	32
3CPS150-30-2	30	250	5/10		63.5	61	59	57.5	56	54.5	53	49	45.5	42	39
3CPS150-30-1	37	250	5/10		70	68	67	65	63	62	60	56	53	49	45
3CPS150-30	37	250	5/10		78	76.5	75	73	70.5	68	66	63	59	55	50.5
3CPS150-40-2	45	250	5/16		89	87	84	81.5	79	77	74.5	70.5	65.5	60	56
3CPS150-40-1	45	250	5/16		96.5	94	91.5	89	86.5	84	81.5	77	72.5	67	62
3CPS150-40	55	250	5/16		104	102	100	97	95	91	88	84	79.5	74	68
3CPS150-50-2	55	250	5/16		115.5	112	109	106	102.5	100	97	92	86	79	73.5
3CPS150-50-1	75	250	5/16		122.5	119.5	117	113.5	110.5	107.5	104.5	99	93.5	87	80
3CPS150-50	75	250	5/16		130	127.5	125	121	119	115	111.5	106.5	101	94.5	86.5
3CPS150-60-2	75	250	5/16		140	137	133	130	126	121	118	112	106	98	91
3CPS150-60-1	75	250	5/25		148.5	145	141.7	137.5	135	131	127	120.5	114.5	106.5	97.5
3CPS150-60	75	250	5/25		157	153	149	145	142	139.5	137	130	123.5	116	109

Model	Motor power	Inlet/Outlet Pipe	Pressure tank	Flow m³/h	300	360	420	480	540	600	660	720
	KW	DN	L/Bar									
3CPS200-10-B	18.5	300	5/6	Head H(m)	25.5	25	24	23	21.5	20	18	15.5
3CPS200-10-A	22	300	5/6		29	28.5	27.5	26.5	25.5	24	22	20
3CPS200-10	30	300	5/6		38.5	38	37.5	36.5	35	34	32.5	30
3CPS200-20-2B	37	300	5/10		53	51	49	47	44	41	37	32
3CPS200-20-2A	45	300	5/10		59.5	58	56	54	52.5	49	44.5	40.5
3CPS200-20-A	55	300	5/10		69	68	66	64	62	59	55.5	51
3CPS200-20	55	300	5/10		78.5	77.5	76	74	71.5	69	66	61.5
3CPS200-30-2B	75	300	5/16		91.5	89	86.5	83.5	79	75	70	63
3CPS200-30-A-B	75	300	5/16		95	93	90	87	83.5	79	73.5	67
3CPS200-30-2A	75	300	5/16		99.5	97.5	94.5	91.5	89	84	78.5	72
3CPS200-30-B	75	300	5/16		104.5	102.5	100	97	93	89	84.5	77.5
3CPS200-30-A	75	300	5/16		108	106	103.5	100.5	97.5	93	88	81.5
3CPS200-30	90	300	5/16		117.5	116	113.5	110.5	107	103	99	92
3CPS200-40-2B	90	300	5/16		131.5	129	125.5	121	115.5	110	103.5	94
3CPS200-40-2A	110	300	5/16		138.5	136	132	128	124	118	111	102.5
3CPS200-40-A	110	300	5/25		148	145.5	142.5	138	134	128	122	113
3CPS200-40	110	300	5/25		157.5	155.5	152.5	148	143.5	138	132.5	123.5

4 pcs Vertical Pumps Constant Pressure Booster 4CPS 50HZ

Main Components



No.	Name	Quantity	Remark
1	Vertical multistage pump	4	SS304/SS316
2	VFD	4	IP65 protection
3	Pressure transmitter	3	0~16bar range
4	Control cabinet with HMI	1	10" HMI
5	Inlet and outlet pipe	one set	SS304
6	Pressure guage	2	
7	Valve	12	Ball valve/butterfly valve/check valve
8	Pressure tank	1	5L
9	Base frame	1	Carbon steel

Performance table

Model	Motor power	Inlet/Outlet Pipe	Pressure tank	Flow m³/h	1.6	2.4	3.2	4	4.8	5.6	6.4	7.2
	KW	DN	L/Bar									
4CPS1-20	0.37	50	5/6	Head H(m)	13	12.5	12	11.5	11	10.5	10	9.5
4CPS1-30	0.37	50	5/6		19	18	17.5	17	16.5	16	15	14
4CPS1-40	0.37	50	5/6		24	23.5	23	22.5	21.5	21	19	18
4CPS1-50	0.37	50	5/6		30	29.6	29	28	27	26	24	22
4CPS1-60	0.37	50	5/10		36	35.5	35	33.5	33	31	28	26
4CPS1-70	0.37	50	5/10		42	41	40.5	39	38	36	33	30
4CPS1-80	0.55	50	5/10		48	47	46	45	43	41	38	34
4CPS1-90	0.55	50	5/10		54	53	52	51	49	46	43	39
4CPS1-100	0.55	50	5/10		60	59	58	57	54	51	48	43
4CPS1-110	0.55	50	5/10		66	65	63	61	59	56	52	47
4CPS1-120	0.75	50	5/10		72	71	69	67	64	61	57	51
4CPS1-130	0.75	50	5/10		78	77	75	73	69	66	62	55
4CPS1-150	0.75	50	5/16		89	88	86	84	79	76	71	63
4CPS1-170	1.1	50	5/16		101	99	97	95	89	86	80	71
4CPS1-190	1.1	50	5/16		113	110	108	106	99	96	68	79
4CPS1-210	1.1	50	5/16		124	122	120	117	110	106	98	87
4CPS1-230	1.1	50	5/25		137	133	131	128	121	116	107	96
4CPS1-250	1.5	50	5/25		149	145	143	139	131	126	116	104
4CPS1-270	1.5	50	5/25		161	157	155	150	141	136	125	112
4CPS1-300	1.5	50	5/25		178	175	171	166	157	150	139	124
4CPS1-330	2.2	50	5/25		196	192	188	183	173	165	154	137
4CPS1-360	2.2	50	5/25		214	210	205	200	190	181	169	151

Model	Motor power	Inlet/Outlet Pipe	Pressure tank	Flow m³/h	4	4.8	6.4	8	9.6	11.2	12.8	14
	KW	DN	L/Bar									
4CPS2-20	0.37	50	5/6	Head H(m)	18	17	16	15	13	12	10	8
4CPS2-30	0.37	50	5/6		27	26	24	22	20	18	15	12
4CPS2-40	0.55	50	5/6		36	35	33	30	26	24	20	16
4CPS2-50	0.55	50	5/10		45	43	40	37	33	30	24	20
4CPS2-60	0.75	50	5/10		53	52	50	45	40	36	30	24
4CPS2-70	0.75	50	5/10		63	61	57	52	47	41	35	28
4CPS2-90	1.1	50	5/10		80	78	73	67	61	54	45	37
4CPS2-110	1.1	50	5/16		98	95	89	82	73	64	54	44
4CPS2-130	1.5	50	5/16		116	114	106	98	89	78	65	52
4CPS2-150	1.5	50	5/25		134	130	123	112	100	90	73	60
4CPS2-180	2.2	50	5/25		161	157	148	136	121	108	91	76
4CPS2-220	2.2	50	5/25		197	192	180	165	148	130	110	90
4CPS2-260	3	50	5/25		232	228	214	198	179	158	130	110

4 pcs Vertical Pumps Constant Pressure Booster 4CPS 50HZ

Performance table

Model	Motor power	Inlet/Outlet Pipe	Pressure tank	Flow m³/h	4.8	6.4	8	9.6	11.2	12	12.8	14.4	16
	KW	DN	L/Bar										
4CPS3-20	0.37	80	5/6	Head H(m)	12.5	11.5	11	10.5	10	9	8	7	6
4CPS3-30	0.37	80	5/6		19	18.5	17.5	16.5	15	14	13	11	9
4CPS3-40	0.37	80	5/6		25	24	23	21.5	20	19	18	15	12
4CPS3-50	0.37	80	5/6		31	30	29	27	25	23	22	19	16
4CPS3-60	0.55	80	5/6		36	35	34	32	30	28	27	23	19
4CPS3-70	0.55	80	5/10		43	41	39	37	34	32	31	27	22
4CPS3-80	0.75	80	5/10		49	47	45	43	39	37	35	31	25
4CPS3-90	0.75	80	5/10		55	53	51	48	45	42	40	35	28
4CPS3-100	0.75	80	5/10		61	59	57	54	50	47	45	39	31
4CPS3-110	1.1	80	5/10		67	64	61	58	54	51	49	42	34
4CPS3-120	1.1	80	5/10		73	70	67	63	58	55	52	45	37
4CPS3-130	1.1	80	5/16		78	76	73	69	64	60	57	49	40
4CPS3-150	1.1	80	5/16		90	88	84	79	73	69	66	57	46
4CPS3-170	1.5	80	5/16		103	100	96	90	83	79	75	64	52
4CPS3-190	1.5	80	5/16		115	112	107	100	92	88	83	72	58
4CPS3-210	2.2	80	5/16		128	124	119	112	102	98	91	79	64
4CPS3-230	2.2	80	5/25		140	135	130	122	112	107	100	86	70
4CPS3-250	2.2	80	5/25		151	147	141	131	122	116	109	94	76
4CPS3-270	2.2	80	5/25		164	159	152	143	132	124	117	101	82
4CPS3-290	2.2	80	5/25		175	170	163	153	142	133	126	109	88
4CPS3-310	3.0	80	5/25		187	182	175	165	153	142	135	116	94
4CPS3-330	3.0	80	5/25		199	194	187	176	163	151	145	125	100
4CPS3-360	3.0	80	5/25		218	212	204	192	178	168	159	137	109

Model	Motor power	Inlet/Outlet Pipe	Pressure tank	Flow m³/h	6	8	12	16	20	24	28
	KW	DN	L/Bar								
4CPS4-20	0.37	80	5/6	Head H(m)	19	18	17	15	13	10	8
4CPS4-30	0.55	80	5/6		28	27	26	24	20	18	13
4CPS4-40	0.75	80	5/6		38	36	34	32	27	24	19
4CPS4-50	1.1	80	5/10		47	45	43	40	34	31	23
4CPS4-60	1.1	80	5/10		56	54	52	48	41	37	28
4CPS4-70	1.5	80	5/10		66	63	61	56	48	43	33
4CPS4-80	1.5	80	5/10		74	72	70	64	55	50	38
4CPS4-100	2.2	80	5/16		96	90	87	81	71	62	48
4CPS4-120	2.2	80	5/16		114	108	104	95	85	75	58
4CPS4-140	3	80	5/16		136	126	122	112	101	89	68
4CPS4-160	3	80	5/25		152	144	140	129	115	101	78
4CPS4-190	4	80	5/25		183	171	168	153	137	122	93
4CPS4-220	4	80	5/25	211	200	192	178	160	138	108	

4 pcs Vertical Pumps Constant Pressure Booster 4CPS 50HZ

● Performance table

Model	Motor power	Inlet/Outlet Pipe	Pressure tank	Flow m ³ /h	12	16	20	24	28	32
	KW	DN	L/Bar							
4CPS5-20	0.37	80	5/6	Head H(m)	12	11	10	9	7	4
4CPS5-30	0.55	80	5/6		18	17	15	14	11	9
4CPS5-40	0.55	80	5/6		24	22	20	18	15	12
4CPS5-50	0.75	80	5/6		31	28	26	23	19	16
4CPS5-60	1.1	80	5/6		37	35	32	27	23	19
4CPS5-70	1.1	80	5/10		43	41	37	33	27	22
4CPS5-80	1.1	80	5/10		50	47	43	38	32	25
4CPS5-90	1.5	80	5/10		56	53	48	43	37	29
4CPS5-100	1.5	80	5/10		62	59	54	48	41	34
4CPS5-110	2.2	80	5/10		68	64	59	53	46	38
4CPS5-120	2.2	80	5/10		74	70	65	58	50	41
4CPS5-130	2.2	80	5/10		80	76	70	62	54	44
4CPS5-140	2.2	80	5/16		86	81	75	68	58	47
4CPS5-150	2.2	80	5/16		92	87	81	73	63	51
4CPS5-160	2.2	80	5/16		99	93	87	79	69	55
4CPS5-180	3	80	5/16		111	106	100	90	79	63
4CPS5-200	3	80	5/16		123	118	112	102	89	71
4CPS5-220	4	80	5/16		135	130	123	112	99	79
4CPS5-240	4	80	5/25		147	142	134	122	107	87
4CPS5-260	4	80	5/25		159	155	146	133	116	94
4CPS5-290	4	80	5/25	181	174	164	149	131	107	
4CPS5-320	5.5	80	5/25	200	193	181	164	145	120	

Model	Motor power	Inlet/Outlet Pipe	Pressure tank	Flow m ³ /h	20	24	28	32	36	40	44	48	
	KW	DN	L/Bar										
4CPS8-20	0.75	100	5/6	Head H(m)	20	19.5	19	18	17	16	14	13	
4CPS8-30	1.1	100	5/6		30	29.5	28.5	27	25	24	21	19	19
4CPS8-40	1.5	100	5/6		41	39.5	38	36	34	32	28	26	26
4CPS8-50	2.2	100	5/10		52	50	48	45	42	40	36	32	32
4CPS8-60	2.2	100	5/10		62	60	57	54	51	48	43	39	39
4CPS8-80	3	100	5/10		83	80	77	73	69	65	58	52	52
4CPS8-100	4	100	5/10		104	100	97	92	87	81	73	65	65
4CPS8-120	4	100	5/16		124	120	116	111	104	92	87	78	78
4CPS8-140	5.5	100	5/16		145	141	136	130	122	113	102	92	92
4CPS8-160	5.5	100	5/16		166	161	156	148	139	130	118	106	106
4CPS8-180	7.5	100	5/25		187	182	175	167	157	146	134	120	120
4CPS8-200	7.5	100	5/25		208	202	195	186	175	163	150	135	135

4 pcs Vertical Pumps Constant Pressure Booster 4CPS 50HZ

● Performance table

Model	Motor power	Inlet/Outlet Pipe	Pressure tank	Flow m ³ /h	20	24	28	32	36	40	44	48	52
	KW	DN	L/Bar										
4CPS10-1	0.75	100	5/6	Head H(m)	9.7	9.3	8.9	8.3	7.7	7	6	5	4
4CPS10-2	0.75	100	5/6		19.5	19	18	17	16	15	13.5	11.5	10
4CPS10-3	1.1	100	5/6		29.5	29	28	27	25	23	21	18	16
4CPS10-4	1.5	100	5/6		39.5	38.5	37.5	36	34	31	28	25	22
4CPS10-5	2.2	100	5/10		49.5	48.5	47	44	42	39	35	32	28
4CPS10-6	2.2	100	5/10		60	58	56	54	51	48	43	39	34
4CPS10-7	3	100	5/10		70	68	66	63	60	56	51	45	39
4CPS10-8	3	100	5/16		80	78	75	73	69	64	58	52	44
4CPS10-9	3	100	5/16		90	87	85	81	77	72	66	58	50
4CPS10-10	4	100	5/16		100	97	95	90	85	80	74	66	56
4CPS10-12	4	100	5/16		120	117	114	109	104	96	89	79	68
4CPS10-14	5.5	100	5/16		140	137	134	129	122	113	103	92	79
4CPS10-16	5.5	100	5/25		160	158	153	148	140	129	119	106	91
4CPS10-18	7.5	100	5/25		180	177	172	166	156	145	133	119	102
4CPS10-20	7.5	100	5/25		200	196	191	184	173	162	147	132	114
4CPS10-22	7.5	100	5/25		220	216	210	202	190	178	162	145	126

Model	Motor power	Inlet/Outlet Pipe	Pressure tank	Flow m ³ /h	28	32	36	40	44	48	52	56	60	64	
	KW	DN	L/Bar												
4CPS12-20	1.5	125	5/6	Head H(m)	23.5	23	22.5	22	21	20	18.5	17	15.5	14	
4CPS12-30	2.2	125	5/6		35.5	35	34	33	31.5	30	28	26	23.5	21	21
4CPS12-40	3	125	5/6		47	46	45	44	42	40	37	34	31	28	28
4CPS12-50	3	125	5/10		59.5	58	56.5	55	52.5	50	46.5	43	39	35	35
4CPS12-60	4	125	5/10		71.5	70	68	66	63	60	56	52	47	42	42
4CPS12-70	5.5	125	5/16		83.5	82	79.5	77	73.5	70	65.5	61	55	49	49
4CPS12-80	5.5	125	5/16		95.5	94	91	88	84	80	75	70	63	56	56
4CPS12-90	5.5	125	5/16		108	106	103	100	95.5	91	85	79	71.5	64	64
4CPS12-100	7.5	125	5/16		120	118	114.5	111	106	101	94.5	88	80	72	72
4CPS12-120	7.5	125	5/25		143.5	141	137	133	127	121	113.5	106	96	86	86
4CPS12-140	9.2	125	5/25		168	165	160	155	148	141	132.5	124	112	100	100
4CPS12-160	11	125	5/25		192.5	189	183.5	178	170	162	152	142	128.5	115	115
4CPS12-180	11	125	5/25		217	213	207.5	202	192.5	183	171.5	160	145	130	130

Model	Motor power	Inlet/Outlet Pipe	Pressure tank	Flow m ³ /h	16	20	24	28	32	36	40	44	
	KW	DN	L/Bar										
2CPS15-10	1.1	125	5/6	Head H(m)	12	11.5	11	10.5	9.5	8.5	7.5	6.5	
2CPS15-20	2.2	125	5/6		25	24.5	24	23	21.5	20	18	16	16
2CPS15-30	3	125	5/6		39	38	37	35	33	30	28	25	25
2CPS15-40	4	125	5/10		52	51	49	46	44	40	37	33	33
2CPS15-50	4	125	5/10		65	63	61	59	55	51	47	42	42
2CPS15-60	5.5	125	5/10		78	76	74	71	67	62	57	51	51
2CPS15-70	5.5	125	5/16		92	90	87	83	79	73	67	60	60
2CPS15-80	7.5	125	5/16		106	103	100	96	90	84	77	69	69
2CPS15-90	7.5	125	5/16		120	117	114	109	103	95	87	79	79
2CPS15-100	11	125	5/16		133	130	126	121	114	106	97	88	88
2CPS15-120	11	125	5/25		160	157	152	146	138	128	117	106	106
2CPS15-140	11	125	5/25		187	182	177	169	160	149	137	124	124
2CPS15-170	15	125	5/25		227	222	215	206	195	182	167	151	151

4 pcs Vertical Pumps Constant Pressure Booster 4CPS 50HZ

● Performance table

Model	Motor power	Inlet/Outlet Pipe	Pressure tank	Flow m³/h	32	40	48	56	64	72	80	88	
	KW	DN	L/Bar										
4CPS16-20	2.2	125	5/6	Head H(m)	27	26	25	24	22	21	19	16	
4CPS16-30	3	125	5/6		41	40	38	37	34	32	29	25	
4CPS16-40	4	125	5/6		54	53	52	49	46	43	38	34	
4CPS16-50	5.5	125	5/10		68	67	65	62	58	54	48	43	
4CPS16-60	5.5	125	5/10		82	80	78	74	70	64	58	52	
4CPS16-70	7.5	125	5/16		96	95	91	87	82	76	68	61	
4CPS16-80	7.5	125	5/16		110	108	104	99	94	86	77	70	
4CPS16-100	9.2	125	5/16		138	136	131	125	118	109	97	87	
4CPS16-120	11	125	5/16		166	162	157	150	141	130	116	105	
4CPS16-140	15	125	5/25		194	190	184	175	166	152	136	122	
4CPS16-160	15	125	5/25		222	217	210	200	189	174	156	140	

Model	Motor power	Inlet/Outlet Pipe	Pressure tank	Flow m³/h	40	48	56	64	72	80	88	96	104	112	
	KW	DN	L/Bar												
4CPS20-10	1.1	125	5/6	Head H(m)	13.5	13	12.5	12	11	10	9	8	7	6	
4CPS20-20	2.2	125	5/6		27	26.5	26	25	24	23	22	20	18	15	
4CPS20-30	4	125	5/6		40	39.5	39	38	37	35	33	30	27	24	
4CPS20-40	5.5	125	5/10		54	53	52	51	49	47	44	41	37	33	
4CPS20-50	5.5	125	5/10		67	66	64	62	60	58	55	50	45	40	
4CPS20-60	7.5	125	5/16		81	79	77	75	73	70	66	61	55	49	
4CPS20-70	7.5	125	5/16		95	93	91	89	86	82	77	71	65	58	
4CPS20-80	9.2	125	5/16		109	107	105	102	99	94	89	82	75	67	
4CPS20-100	11	125	5/16		136	134	131	128	124	118	111	103	95	85	
4CPS20-120	15	125	5/25		164	162	158	154	149	142	133	124	114	102	
4CPS20-140	15	125	5/25		192	189	185	180	174	166	156	145	133	119	
4CPS20-170	18.5	125	5/25		234	230	225	219	212	202	190	177	162	145	

Model	Motor power	Inlet/Outlet Pipe	Pressure tank	Flow m³/h	100	120	140	160	180	200	220
	KW	DN	L/Bar								
4CPS45-10-1	3	150	5/6	Head H(m)	20	19	18	17	15	13	11
4CPS45-10	4	150	5/6		24	23	22	21	19	18	16
4CPS45-20-2	5.5	150	5/6		40	38	36	33	30	27	23
4CPS45-20	7.5	150	5/6		48	46	44	42	39	35	31
4CPS45-30-2	9.2	150	5/10		63	61	58	54	50	44	38
4CPS45-30	11	150	5/10		71	69	66	63	58	53	47
4CPS45-40-2	15	150	5/10		87	84	80	75	69	62	54
4CPS45-40	15	150	5/10		95	92	88	84	78	71	62
4CPS45-50-2	18.5	150	5/16		111	107	102	96	88	80	69
4CPS45-50	18.5	150	5/16		119	115	110	105	97	88	78
4CPS45-60-2	22	150	5/16		135	130	124	117	108	97	85
4CPS45-60	22	150	5/16		143	138	132	125	116	106	93
4CPS45-70-2	26	150	5/16		158	152	146	138	127	115	100
4CPS45-70	26	150	5/16		166	161	154	146	135	124	109
4CPS45-80-2	30	150	5/16		182	175	168	159	146	133	116
4CPS45-80	30	150	5/25		190	184	176	167	154	141	124
4CPS45-90-2	30	150	5/25		205	198	190	180	166	150	132
4CPS45-90	37	150	5/25		214	207	198	188	174	159	140
4CPS45-100-2	37	150	5/25		230	221	212	200	185	168	147
4CPS45-100	37	150	5/25		238	230	220	209	193	177	155
4CPS45-110-2	45	150	5/25		255	246	236	223	206	188	165
4CPS45-110	45	150	5/25		263	255	244	232	214	196	173
4CPS45-120-2	45	150	5/25		280	270	259	245	226	206	181
4CPS45-120	45	150	5/25		289	280	268	255	236	216	190
4CPS45-130-2	45	150	5/40	305	294	282	267	247	225	198	

4 pcs Vertical Pumps Constant Pressure Booster 4CPS 50HZ

● Performance table

Model	Motor power	Inlet/Outlet Pipe	Pressure tank	Flow m³/h	80	96	112	128	144	160	128
	KW	DN	L/Bar								
4CPS32-10-1	1.5	150	5/6	Head H(m)	14	13	12	11	9	7	4
4CPS32-10	2.2	150	5/6		18	17	15	14	13	11	8
4CPS32-20-2	3	150	5/6		29	28	26	23	20	16	11
4CPS32-20	4	150	5/6		36	34	32	29	27	23	18
4CPS32-30-2	5.5	150	5/10		47	44	41	38	33	28	21
4CPS32-30	5.5	150	5/10		54	51	48	44	40	35	27
4CPS32-40-2	7.5	150	5/10		65	62	58	53	46	40	30
4CPS32-40	7.5	150	5/10		72	69	65	59	53	47	37
4CPS32-50-2	9.2	150	5/16		83	79	74	68	60	52	41
4CPS32-50	9.2	150	5/16		90	86	81	74	67	59	47
4CPS32-60-2	11	150	5/16		101	97	90	83	74	65	51
4CPS32-60	11	150	5/16		108	104	97	90	81	72	57
4CPS32-70-2	15	150	5/16		119	114	107	98	88	78	60
4CPS32-70	15	150	5/16		126	121	113	105	95	85	67
4CPS32-80-2	15	150	5/16		136	131	123	114	102	90	71
4CPS32-80	15	150	5/25		144	138	130	120	109	97	77
4CPS32-90-2	18.5	150	5/25		154	148	140	129	117	102	82
4CPS32-90	18.5	150	5/25		162	156	147	136	124	109	88
4CPS32-100-2	18.5	150	5/25		175	166	157	146	131	115	91
4CPS32-100	18.5	150	5/25		182	173	164	152	138	122	98
4CPS32-110-2	22	150	5/25		193	184	173	164	146	128	102
4CPS32-110	22	150	5/25		200	191	180	168	153	135	109
4CPS32-120-2	22	150	5/25		211	201	189	178	160	140	113
4CPS32-120	22	150	5/25		218	208	196	184	167	147	120
4CPS32-130-2	26	150	5/40		230	218	206	193	174	153	124
4CPS32-130	26	150	5/40		237	225	213	200	181	160	131
4CPS32-140-2	26	150	5/40		247	235	222	210	189	165	135
4CPS32-140	30	150	5/40		255	242	229	216	196	172	147
4CPS32-150-2	30	150	5/40		266	253	239	224	203	178	145
4CPS32-150	30	150	5/40		274	260	246	231	210	185	152
4CPS32-160-2	30	150	5/40		284	270	255	240	218	190	156
4CPS32-160	30	150	5/40		292	277	262	246	225	197	163

Model	Motor power	Inlet/Outlet Pipe	Pressure tank	Flow m³/h	120	160	200	240	256	280	320
	KW	DN	L/Bar								
4CPS64-10-1	4.0	200	5/6	Head H(m)	19	18	16	14	13	11	8
4CPS64-10	5.5	200	5/6		27	25	23	21	20	18	15
4CPS64-20-2	7.5	200	5/6		39	36	33	29	27	23	17
4CPS64-20-1	11	200	5/10		46	44	40	36	34	30	24
4CPS64-20	11	200	5/10		53	51	47	43	41	37	30
4CPS64-30-2	15	200	5/10		66	62	56	50	47	41	32
4CPS64-30-1	15	200	5/10		73	69	63	57	54	48	39
4CPS64-30	18.5	200	5/10		80	76	70	64	61	55	46
4CPS64-40-2	18.5	200	5/16		92	87	80	71	67	60	47
4CPS64-40-1	22	200	5/16		100	94	87	78	74	67	54
4CPS64-40	22	200	5/16		107	101	94	85	81	74	61
4CPS64-50-2	26	200	5/16		121	114	105	95	89	80	64
4CPS64-50-1	26	200	5/16		128	121	112	102	96	87	71
4CPS64-50	30	200	5/25		136	129	119	109	103	94	78
4CPS64-60-2	30	200	5/25		150	142	131	118	111	101	81
4CPS64-60-1	37	200	5/25		157	149	138	125	118	108	88
4CPS64-60	37	200	5/25		164	156</					

4 pcs Vertical Pumps Constant Pressure Booster 4CPS 50HZ

● Performance table

Model	Motor power	Inlet/Outlet Pipe	Pressure tank	Flow m³/h	200	240	280	320	360	400	440
	KW	DN	L/Bar								
4CPS90-10-1	5.5	200	5/6	Head H(m)	22	19	17	16	13	10	6
4CPS90-10	7.5	200	5/6		25	24	22	21	19	16	12
4CPS90-20-2	11	200	5/6		41	39	36	32	28	22	15
4CPS90-20	15	200	5/10		53	50	47	44	40	36	30
4CPS90-30-2	18.5	200	5/10		68	65	60	55	49	41	32
4CPS90-30	22	200	5/10		81	77	72	67	62	55	48
4CPS90-40-2	26	200	5/10		98	93	87	80	72	62	50
4CPS90-40	30	200	5/10		110	105	100	92	84	76	66
4CPS90-50-2	37	200	5/16		126	120	113	104	93	81	68
4CPS90-50	37	200	5/25		139	131	124	115	106	94	83
4CPS90-60-2	45	200	5/25		155	148	139	129	117	102	86
4CPS90-60	45	200	5/25		168	160	150	141	130	117	103

4 pcs Vertical Pumps Constant Pressure Booster 4CPS 50HZ

● Performance table

Model	Motor power	Inlet/Outlet Pipe	Pressure tank	Flow m³/h	320	360	400	440	480	520	560	600	640	680	720
	KW	DN	L/Bar												
4CPS150-10-1	11	250	5/6	Head H(m)	18.3	17.8	17.3	17	16	15	14	12.5	11	10	8.5
4CPS150-10	15	250	5/6		24	23	22.5	22	21.5	20.5	20	18.5	17	16	15
4CPS150-20-2	18.5	250	5/6		37	35.5	34	33	32	31	29	27.5	26	23	21
4CPS150-20-1	22	250	5/10		44.3	43	42	40	39	38.5	37.5	35	33	30	27
4CPS150-20	26	250	5/10		50	49	48	47	45.5	44	42	40	37	34	32
4CPS150-30-2	30	250	5/10		63.5	61	59	57.5	56	54.5	53	49	45.5	42	39
4CPS150-30-1	37	250	5/10		70	68	67	65	63	62	60	56	53	49	45
4CPS150-30	37	250	5/10		78	76.5	75	73	70.5	68	66	63	59	55	50.5
4CPS150-40-2	45	250	5/16		89	87	84	81.5	79	77	74.5	70.5	65.5	60	56
4CPS150-40-1	45	250	5/16		96.5	94	91.5	89	86.5	84	81.5	77	72.5	67	62
4CPS150-40	55	250	5/16		104	102	100	97	95	91	88	84	79.5	74	68
4CPS150-50-2	55	250	5/16		115.5	112	109	106	102.5	100	97	92	86	79	73.5
4CPS150-50-1	75	250	5/16		122.5	119.5	117	113.5	111.5	107.5	104.5	99	93.5	87	80
4CPS150-50	75	250	5/16		130	127.5	125	121	119	115	111.5	106.5	101	94.5	86.5
4CPS150-60-2	75	250	5/16		140	137	133	130	126	121	118	112	106	98	91
4CPS150-60-1	75	250	5/25		148.5	145	141.7	137.5	135	131	127	120.5	114.5	106.5	97.5
4CPS150-60	75	250	5/25		157	153	149	145	142	139.5	137	130	123.5	116	109

Model	Motor power	Inlet/Outlet Pipe	Pressure tank	Flow m³/h	240	280	320	360	400	440	480	520	560	600
	KW	DN	L/Bar											
4CPS120-10	11	250	5/6	Head H(m)	22	21.8	21.6	21	20.5	19.5	18.5	17	16	15
4CPS120-20-2	15	250	5/6		34	33.6	33	31	30.2	30	28.5	27	25	24
4CPS120-20-1	18.5	250	5/6		41	40	39.5	38.5	37	36.5	34.5	32.5	30	27.5
4CPS120-20	22	250	5/10		46	45	44.5	43.5	42.4	41	40	38	36	33.5
4CPS120-30-2	26	250	5/10		57	56	55	53.5	52	51	49	46.5	43.5	41
4CPS120-30-1	30	250	5/10		64	63	62	60	58.5	57.5	55.5	52	49	46
4CPS120-30	30	250	5/10		69.5	68.5	67.5	66	64.4	62.5	61	57.5	54.5	51
4CPS120-40-2	37	250	5/10		80.5	79	78	76	73.5	72	69	66	61.5	58
4CPS120-40-1	37	250	5/16		87	86	84.5	82	80	78	76	72	68	64.5
4CPS120-40	45	250	5/16		92.5	91	90	88	85.5	83	81	77	73	68.5
4CPS120-50-2	45	250	5/16		104.5	103	101	99	96	93	90	85.5	80.5	75.5
4CPS120-50-1	45	250	5/16		110.5	109	107.5	105	102	100	97	92	86.5	83
4CPS120-50	55	250	5/16		115.5	114	113	110	107.5	104.5	101.5	96	91	86
4CPS120-60-2	55	250	5/16		128	125.5	123	121	117.3	113.5	110	104.5	98.5	92.5
4CPS120-60-1	55	250	5/16		134	132	130.5	127	124	121	118	111	105	100
4CPS120-6	75	250	5/25		139	137	135	132	128.8	126	123	116	110	104
4CPS120-70-2	75	250	5/25		151	148	145.5	143	138.6	134	130	123.5	116.5	109
4CPS120-70-1	75	250	5/25		156.5	154	152	148.5	144.5	141	137.5	130	123	116.5
4CPS120-70	75	250	5/25		162.5	160.5	158.5	155	151	148	145	137	129	123

Model	Motor power	Inlet/Outlet Pipe	Pressure tank	Flow m³/h	400	480	560	640	720	800	880	960
	KW	DN	L/Bar									
4CPS200-10-B	18.5	300	5/6	Head H(m)	25.5	25	24	23	21.5	20	18	15.5
4CPS200-10-A	22	300	5/6		29	28.5	27.5	26.5	25.5	24	22	20
4CPS200-10	30	300	5/6		38.5	38	37.5	36.5	35	34	32.5	30
4CPS200-20-2B	37	300	5/10		53	51	49	47	44	41	37	32
4CPS200-20-2A	45	300	5/10		59.5	58	56	54	52.5	49	44.5	40.5
4CPS200-20-A	55	300	5/10		69	68	66	64	62	59	55.5	51
4CPS200-20	55	300	5/10		78.5	77.5	76	74	71.5	69	66	61.5
4CPS200-30-2B	75	300	5/16		91.5	89	86.5	83.5	79	75	70	63
4CPS200-30-A-B	75	300	5/16		95	93	90	87	83.5	79	73.5	67
4CPS200-30-2A	75	300	5/16		99.5	97.5	94.5	91.5	89	84	78.5	72
4CPS200-30-B	75	300	5/16		104.5	102.5	100	97	93	89	84.5	77.5
4CPS200-30-A	75	300	5/16		108	106	103.5	100.5	97.5	93	88	81.5
4CPS200-30	90	300	5/16		117.5	116	113.5	110.5	107	103	99	92
4CPS200-40-2B	90	300	5/16		131.5	129	125.5	121	115.5	110	103.5	94
4CPS200-40-2A	110	300	5/16		138.5	136	132	128	124	118	111	102.5
4CPS200-40-A	110	300	5/25		148	145.5	142.5	138	134	128	122	113
4CPS200-40	110	300	5/25		157.5	155.5	152.5	148	143.5	138	132.5	123.5

5 pcs Vertical Pumps Constant Pressure Booster 5CPS 50HZ

Main Components



No.	Name	Quantity	Remark
1	Vertical multistage pump	5	SS304/SS316
2	VFD	5	IP65 protection
3	Pressure transmitter	3	0~16bar range
4	Control cabinet with HMI	1	10" HMI
5	Inlet and outlet pipe	one set	SS304
6	Pressure guage	2	
7	Valve	15	Ball valve/butterfly valve/check valve
8	Pressure tank	1	5L
9	Base frame	1	Carbon steel

Performance table

Model	Motor power	Inlet/Outlet Pipe	Pressure tank	Flow m³/h	2	3	4	5	6	7	8	9
	KW	DN	L/Bar									
5CPS1-20	0.37	65	5/6	Head H(m)	13	12.5	12	11.5	11	10.5	10	9.5
5CPS1-30	0.37	65	5/6		19	18	17.5	17	16.5	16	15	14
5CPS1-40	0.37	65	5/6		24	23.5	23	22.5	21.5	21	19	18
5CPS1-50	0.37	65	5/6		30	29.6	29	28	27	26	24	22
5CPS1-60	0.37	65	5/10		36	35.5	35	33.5	33	31	28	26
5CPS1-70	0.37	65	5/10		42	41	40.5	39	38	36	33	30
5CPS1-80	0.55	65	5/10		48	47	46	45	43	41	38	34
5CPS1-90	0.55	65	5/10		54	53	52	51	49	46	43	39
5CPS1-100	0.55	65	5/10		60	59	58	57	54	51	48	43
5CPS1-110	0.55	65	5/10		66	65	63	61	59	56	52	47
5CPS1-120	0.75	65	5/10		72	71	69	67	64	61	57	51
5CPS1-130	0.75	65	5/10		78	77	75	73	69	66	62	55
5CPS1-150	0.75	65	5/16		89	88	86	84	79	76	71	63
5CPS1-170	1.1	65	5/16		101	99	97	95	89	86	80	71
5CPS1-190	1.1	65	5/16		113	110	108	106	99	96	88	79
5CPS1-210	1.1	65	5/16		124	122	120	117	110	106	98	87
5CPS1-230	1.1	65	5/25		137	133	131	128	121	116	107	96
5CPS1-250	1.5	65	5/25		149	145	143	139	131	126	116	104
5CPS1-270	1.5	65	5/25	161	157	155	150	141	136	125	112	
5CPS1-300	1.5	65	5/25	178	175	171	166	157	150	139	124	
5CPS1-330	2.2	65	5/25	196	192	188	183	173	165	154	137	
5CPS1-360	2.2	65	5/25	214	210	205	200	190	181	169	151	

Model	Motor power	Inlet/Outlet Pipe	Pressure tank	Flow m³/h	5	6	8	10	12	14	16	17.5
	KW	DN	L/Bar									
5CPS2-20	0.37	65	5/6	Head H(m)	18	17	16	15	13	12	10	8
5CPS2-30	0.37	65	5/6		27	26	24	22	20	18	15	12
5CPS2-40	0.55	65	5/6		36	35	33	30	26	24	20	16
5CPS2-50	0.55	65	5/10		45	43	40	37	33	30	24	20
5CPS2-60	0.75	65	5/10		53	52	50	45	40	36	30	24
5CPS2-70	0.75	65	5/10		63	61	57	52	47	41	35	28
5CPS2-90	1.1	65	5/10		80	78	73	67	61	54	45	37
5CPS2-110	1.1	65	5/16		98	95	89	82	73	64	54	44
5CPS2-130	1.5	65	5/16		116	114	106	98	89	78	65	52
5CPS2-150	1.5	65	5/25		134	130	123	112	100	90	73	60
5CPS2-180	2.2	65	5/25		161	157	148	136	121	108	91	76
5CPS2-220	2.2	65	5/25		197	192	180	165	148	130	110	90
5CPS2-260	3	65	5/25		232	228	214	198	179	158	130	110

5 pcs Vertical Pumps Constant Pressure Booster 5CPS 50HZ

Performance table

Model	Motor power	Inlet/Outlet Pipe	Pressure tank	Flow m³/h	6	8	10	12	14	15	16	18	20
	KW	DN	L/Bar										
5CPS3-20	0.37	80	5/6	Head H(m)	12.5	11.5	11	10.5	10	9	8	7	6
5CPS3-30	0.37	80	5/6		19	18.5	17.5	16.5	15	14	13	11	9
5CPS3-40	0.37	80	5/6		25	24	23	21.5	20	19	18	15	12
5CPS3-50	0.37	80	5/6		31	30	29	27	25	23	22	19	16
5CPS3-60	0.55	80	5/6		36	35	34	32	30	28	27	23	19
5CPS3-70	0.55	80	5/10		43	41	39	37	34	32	31	27	22
5CPS3-80	0.75	80	5/10		49	47	45	43	39	37	35	31	25
5CPS3-90	0.75	80	5/10		55	53	51	48	45	42	40	35	28
5CPS3-100	0.75	80	5/10		61	59	57	54	50	47	45	39	31
5CPS3-110	1.1	80	5/10		67	64	61	58	54	51	49	42	34
5CPS3-120	1.1	80	5/10		73	70	67	63	58	55	52	45	37
5CPS3-130	1.1	80	5/16		78	76	73	69	64	60	57	49	40
5CPS3-150	1.1	80	5/16		90	88	84	79	73	69	66	57	46
5CPS3-170	1.5	80	5/16		103	100	96	90	83	79	75	64	52
5CPS3-190	1.5	80	5/16		115	112	107	100	92	88	83	72	58
5CPS3-210	2.2	80	5/16		128	124	119	112	102	98	91	79	64
5CPS3-230	2.2	80	5/25		140	135	130	122	112	107	100	86	70
5CPS3-250	2.2	80	5/25		151	147	141	131	122	116	109	94	76
5CPS3-270	2.2	80	5/25		164	159	152	143	132	124	117	101	82
5CPS3-290	2.2	80	5/25		175	170	163	153	142	133	126	109	88
5CPS3-310	3.0	80	5/25		187	182	175	165	153	142	135	116	94
5CPS3-330	3.0	80	5/25		199	194	187	176	163	151	145	125	100
5CPS3-360	3.0	80	5/25		218	212	204	192	178	168	159	137	109

Model	Motor power	Inlet/Outlet Pipe	Pressure tank	Flow m³/h	7.5	10	15	20	25	30	35
	KW	DN	L/Bar								
5CPS4-20	0.37	80	5/6	Head H(m)	19	18	17	15	13	10	8
5CPS4-30	0.55	80	5/6		28	27	26	24	20	18	13
5CPS4-40	0.75	80	5/6		38	36	34	32	27	24	19
5CPS4-50	1.1	80	5/10		47	45	43	40	34	31	23
5CPS4-60	1.1	80	5/10		56	54	52	48	41	37	28
5CPS4-70	1.5	80	5/10		66	63	61	56	48	43	33
5CPS4-80	1.5	80	5/10		74	72	70	64	55	50	38
5CPS4-100	2.2	80	5/16		96	90	87	81	71	62	48
5CPS4-120	2.2	80	5/16		114	108	104	95	85	75	58
5CPS4-140	3	80	5/16		136	126	122	112	101	89	68
5CPS4-160	3	80	5/25		152	144	140	129	115	101	78
5CPS4-190	4	80	5/25		183	171	168	153	137	122	93
5CPS4-220	4	80	5/25		211	200	192	178	160	138	108

5 pcs Vertical Pumps Constant Pressure Booster 5CPS 50HZ

● Performance table

Model	Motor power	Inlet/Outlet Pipe	Pressure tank	Flow m³/h	15	20	25	30	35	40
	KW	DN	L/Bar							
5CPS5-20	0.37	80	5/6	Head H(m)	12	11	10	9	7	4
5CPS5-30	0.55	80	5/6		18	17	15	14	11	9
5CPS5-40	0.55	80	5/6		24	22	20	18	15	12
5CPS5-50	0.75	80	5/6		31	28	26	23	19	16
5CPS5-60	1.1	80	5/6		37	35	32	27	23	19
5CPS5-70	1.1	80	5/10		43	41	37	33	27	22
5CPS5-80	1.1	80	5/10		50	47	43	38	32	25
5CPS5-90	1.5	80	5/10		56	53	48	43	37	29
5CPS5-100	1.5	80	5/10		62	59	54	48	41	34
5CPS5-110	2.2	80	5/10		68	64	59	53	46	38
5CPS5-120	2.2	80	5/10		74	70	65	58	50	41
5CPS5-130	2.2	80	5/10		80	76	70	62	54	44
5CPS5-140	2.2	80	5/16		86	81	75	68	58	47
5CPS5-150	2.2	80	5/16		92	87	81	73	63	51
5CPS5-160	2.2	80	5/16		99	93	87	79	69	55
5CPS5-180	3	80	5/16		111	106	100	90	79	63
5CPS5-200	3	80	5/16		123	118	112	102	89	71
5CPS5-220	4	80	5/16		135	130	123	112	99	79
5CPS5-240	4	80	5/25		147	142	134	122	107	87
5CPS5-260	4	80	5/25		159	155	146	133	116	94
5CPS5-290	4	80	5/25		181	174	164	149	131	107
5CPS5-320	5.5	80	5/25		200	193	181	164	145	120

Model	Motor power	Inlet/Outlet Pipe	Pressure tank	Flow m³/h	25	30	35	40	45	50	55	60
	KW	DN	L/Bar									
5CPS8-20	0.75	100	5/6	Head H(m)	20	19.5	19	18	17	16	14	13
5CPS8-30	1.1	100	5/6		30	29.5	28.5	27	25	24	21	19
5CPS8-40	1.5	100	5/6		41	39.5	38	36	34	32	28	26
5CPS8-50	2.2	100	5/10		52	50	48	45	42	40	36	32
5CPS8-60	2.2	100	5/10		62	60	57	54	51	48	43	39
5CPS8-80	3	100	5/10		83	80	77	73	69	65	58	52
5CPS8-100	4	100	5/10		104	100	97	92	87	81	73	65
5CPS8-120	4	100	5/16		124	120	116	111	104	92	87	78
5CPS8-140	5.5	100	5/16		145	141	136	130	122	113	102	92
5CPS8-160	5.5	100	5/16		166	161	156	148	139	130	118	106
5CPS8-180	7.5	100	5/25		187	182	175	167	157	146	134	120
5CPS8-200	7.5	100	5/25		208	202	195	186	175	163	150	135

5 pcs Vertical Pumps Constant Pressure Booster 5CPS 50HZ

● Performance table

Model	Motor power	Inlet/Outlet Pipe	Pressure tank	Flow m³/h	25	30	35	40	45	50	55	60	65
	KW	DN	L/Bar										
5CPS10-1	0.75	125	5/6	Head H(m)	9.7	9.3	8.9	8.3	7.7	7	6	5	4
5CPS10-2	0.75	125	5/6		19.5	19	18	17	16	15	13.5	11.5	10
5CPS10-3	1.1	125	5/6		29.5	29	28	27	25	23	21	18	16
5CPS10-4	1.5	125	5/6		39.5	38.5	37.5	36	34	31	28	25	22
5CPS10-5	2.2	125	5/10		49.5	48.5	47	44	42	39	35	32	28
5CPS10-6	2.2	125	5/10		60	58	56	54	51	48	43	39	34
5CPS10-7	3	125	5/10		70	68	66	63	60	56	51	45	39
5CPS10-8	3	125	5/16		80	78	75	73	69	64	58	52	44
5CPS10-9	3	125	5/16		90	87	85	81	77	72	66	58	50
5CPS10-10	4	125	5/16		100	97	95	90	85	80	74	66	56
5CPS10-12	4	125	5/16		120	117	114	109	104	96	89	79	68
5CPS10-14	5.5	125	5/16		140	137	134	129	122	113	103	92	79
5CPS10-16	5.5	125	5/25		160	158	153	148	140	129	119	106	91
5CPS10-18	7.5	125	5/25		180	177	172	166	156	145	133	119	102
5CPS10-20	7.5	125	5/25		200	196	191	184	173	162	147	132	114
5CPS10-22	7.5	125	5/25		220	216	210	202	190	178	162	145	126

Model	Motor power	Inlet/Outlet Pipe	Pressure tank	Flow m³/h	35	40	45	50	55	60	65	70	75	80
	KW	DN	L/Bar											
5CPS12-20	1.5	125	5/6	Head H(m)	23.5	23	22.5	22	21	20	18.5	17	15.5	14
5CPS12-30	2.2	125	5/6		35.5	35	34	33	31.5	30	28	26	23.5	21
5CPS12-40	3	125	5/6		47	46	45	44	42	40	37	34	31	28
5CPS12-50	3	125	5/10		59.5	58	56.5	55	52.5	50	46.5	43	39	35
5CPS12-60	4	125	5/10		71.5	70	68	66	63	60	56	52	47	42
5CPS12-70	5.5	125	5/16		83.5	82	79.5	77	73.5	70	65.5	61	55	49
5CPS12-80	5.5	125	5/16		95.5	94	91	88	84	80	75	70	63	56
5CPS12-90	5.5	125	5/16		108	106	103	100	95.5	91	85	79	71.5	64
5CPS12-100	7.5	125	5/16		120	118	114.5	111	106	101	94.5	88	80	72
5CPS12-120	7.5	125	5/25		143.5	141	137	133	127	121	113.5	106	96	86
5CPS12-140	9.2	125	5/25		168	165	160	155	148	141	132.5	124	112	100
5CPS12-160	11	125	5/25		192.5	189	183.5	178	170	162	152	142	128.5	115
5CPS12-180	11	125	5/25		217	213	207.5	202	192.5	183	171.5	160	145	130

Model	Motor power	Inlet/Outlet Pipe	Pressure tank	Flow m³/h	16	20	24	28	32	36	40	44
	KW	DN	L/Bar									
2CPS15-10	1.1	125	5/6	Head H(m)	12	11.5	11	10.5	9.5	8.5	7.5	6.5
2CPS15-20	2.2	125	5/6		25	24.5	24	23	21.5	20	18	16
2CPS15-30	3	125	5/6		39	38	37	35	33	30	28	25
2CPS15-40	4	125	5/10		52	51	49	46	44	40	37	33
2CPS15-50	4	125	5/10		65	63	61	59	55	51	47	42
2CPS15-60	5.5	125	5/10		78	76	74	71	67	62	57	51
2CPS15-70	5.5	125	5/16		92	90	87	83	79	73	67	60
2CPS15-80	7.5	125	5/16		106	103	100	96	92	84	77	69
2CPS15-90	7.5	125	5/16		120	117	114	109	103	95	87	79
2CPS15-100	11	125	5/16		133	130	126	121	114	106	97	88
2CPS15-120	11	125	5/25		160	157	152	146	138	128	117	106
2CPS15-140	11	125	5/25		187	182	177	169	160	149	137	124
2CPS15-170	15	125	5/25		227	222	215	206	195	182	167	151

5 pcs Vertical Pumps Constant Pressure Booster 5CPS 50HZ

● Performance table

Model	Motor power	Inlet/Outlet Pipe	Pressure tank	Flow m³/h	40	50	60	70	80	90	100	110	
	KW	DN	L/Bar										
5CPS16-20	2.2	125	5/6	Head H(m)	27	26	25	24	22	21	19	16	
5CPS16-30	3	125	5/6		41	40	38	37	34	32	29	25	25
5CPS16-40	4	125	5/6		54	53	52	49	46	43	38	34	34
5CPS16-50	5.5	125	5/10		68	67	65	62	58	54	48	43	43
5CPS16-60	5.5	125	5/10		82	80	78	74	70	64	58	52	52
5CPS16-70	7.5	125	5/16		96	95	91	87	82	76	68	61	61
5CPS16-80	7.5	125	5/16		110	108	104	99	94	86	77	70	70
5CPS16-100	9.2	125	5/16		138	136	131	125	118	109	97	87	87
5CPS16-120	11	125	5/16		166	162	157	150	141	130	116	105	105
5CPS16-140	15	125	5/25		194	190	184	175	166	152	136	122	122
5CPS16-160	15	125	5/25		222	217	210	200	189	174	156	140	140

Model	Motor power	Inlet/Outlet Pipe	Pressure tank	Flow m³/h	50	60	70	80	90	100	110	120	130	140	
	KW	DN	L/Bar												
5CPS20-10	1.1	125	5/6	Head H(m)	13.5	13	12.5	12	11	10	9	8	7	6	
5CPS20-20	2.2	125	5/6		27	26.5	26	25	24	23	22	20	18	15	15
5CPS20-30	4	125	5/6		40	39.5	39	38	37	35	33	30	27	24	24
5CPS20-40	5.5	125	5/10		54	53	52	51	49	47	44	41	37	33	33
5CPS20-50	5.5	125	5/10		67	66	64	62	60	58	55	50	45	40	40
5CPS20-60	7.5	125	5/16		81	79	77	75	73	70	66	61	55	49	49
5CPS20-70	7.5	125	5/16		95	93	91	89	86	82	77	71	65	58	58
5CPS20-80	9.2	125	5/16		109	107	105	102	99	94	89	82	75	67	67
5CPS20-100	11	125	5/16		136	134	131	128	124	118	111	103	95	85	85
5CPS20-120	15	125	5/25		164	162	158	154	149	142	133	124	114	102	102
5CPS20-140	15	125	5/25		192	189	185	180	174	166	156	145	133	119	119
5CPS20-170	18.5	125	5/25		234	230	225	219	212	202	190	177	162	145	145

Model	Motor power	Inlet/Outlet Pipe	Pressure tank	Flow m³/h	125	150	175	200	225	250	275
	KW	DN	L/Bar								
5CPS45-10-1	3	200	5/6	Head H(m)	20	19	18	17	15	13	11
5CPS45-10	4	200	5/6		24	23	22	21	19	18	16
5CPS45-20-2	5.5	200	5/6		40	38	36	33	30	27	23
5CPS45-20	7.5	200	5/6		48	46	44	42	39	35	31
5CPS45-30-2	9.2	200	5/10		63	61	58	54	50	44	38
5CPS45-30	11	200	5/10		71	69	66	63	58	53	47
5CPS45-40-2	15	200	5/10		87	84	80	75	69	62	54
5CPS45-40	15	200	5/10		95	92	88	84	78	71	62
5CPS45-50-2	18.5	200	5/16		111	107	102	96	88	80	69
5CPS45-50	18.5	200	5/16		119	115	110	105	97	88	78
5CPS45-60-2	22	200	5/16		135	130	124	117	108	97	85
5CPS45-60	22	200	5/16		143	138	132	125	116	106	93
5CPS45-70-2	26	200	5/16		158	152	146	138	127	115	100
5CPS45-70	26	200	5/16		166	161	154	146	135	124	109
5CPS45-80-2	30	200	5/16		182	175	168	159	146	133	116
5CPS45-80	30	200	5/25		190	184	176	167	154	141	124
5CPS45-90-2	30	200	5/25		205	198	190	180	166	150	132
5CPS45-90	37	200	5/25		214	207	198	188	174	159	140
5CPS45-100-2	37	200	5/25		230	221	212	200	185	168	147
5CPS45-100	37	200	5/25		238	230	220	209	193	177	155
5CPS45-110-2	45	200	5/25		255	246	236	223	206	188	165
5CPS45-110	45	200	5/25		263	255	244	232	214	196	173
5CPS45-120-2	45	200	5/25		280	270	259	245	226	206	181
5CPS45-120	45	200	5/25		289	280	268	255	236	216	190
5CPS45-130-2	45	200	5/40	305	294	282	267	247	225	198	

5 pcs Vertical Pumps Constant Pressure Booster 5CPS 50HZ

● Performance table

Model	Motor power	Inlet/Outlet Pipe	Pressure tank	Flow m³/h	80	100	120	140	160	180	200
	KW	DN	L/Bar								
5CPS32-10-1	1.5	200	5/6	Head H(m)	14	13	12	11	9	7	4
5CPS32-10	2.2	200	5/6		18	17	15	14	13	11	8
5CPS32-20-2	3	200	5/6		29	28	26	23	20	16	11
5CPS32-20	4	200	5/6		36	34	32	29	27	23	18
5CPS32-30-2	5.5	200	5/10		47	44	41	38	33	28	21
5CPS32-30	5.5	200	5/10		54	51	48	44	40	35	27
5CPS32-40-2	7.5	200	5/10		65	62	58	53	46	40	30
5CPS32-40	7.5	200	5/10		72	69	65	59	53	47	37
5CPS32-50-2	9.2	200	5/16		83	79	74	68	60	52	41
5CPS32-50	9.2	200	5/16		90	86	81	74	67	59	47
5CPS32-60-2	11	200	5/16		101	97	90	83	74	65	51
5CPS32-60	11	200	5/16		108	104	97	90	81	72	57
5CPS32-70-2	15	200	5/16		119	114	107	98	88	78	60
5CPS32-70	15	200	5/16		126	121	113	105	95	85	67
5CPS32-80-2	15	200	5/16		136	131	123	114	102	90	71
5CPS32-80	15	200	5/25		144	138	130	120	109	97	77
5CPS32-90-2	18.5	200	5/25		154	148	140	129	117	102	82
5CPS32-90	18.5	200	5/25		162	156	147	136	124	109	88
5CPS32-100-2	18.5	200	5/25		175	166	157	146	131	115	91
5CPS32-100	18.5	200	5/25		182	173	164	152	138	122	98
5CPS32-110-2	22	200	5/25		193	184	173	164	146	128	102
5CPS32-110	22	200	5/25		200	191	180	168	153	135	109
5CPS32-120-2	22	200	5/25		211	201	189	178	160	140	113
5CPS32-120	22	200	5/25		218	208	196	184	167	147	120
5CPS32-130-2	26	200	5/40		230	218	206	193	174	153	124
5CPS32-130	26	200	5/40		237	225	213	200	181	160	131
5CPS32-140-2	26	200	5/40		247	235	222	210	189	165	135
5CPS32-140	30	200	5/40		255	242	229	216	196	172	147
5CPS32-150-2	30	200	5/40		266	253	239	224	203	178	145
5CPS32-150	30	200	5/40		274	260	246	231	210	185	152
5CPS32-160-2	30	200	5/40		284	270	255	240	218	190	156
5CPS32-160	30	200	5/40		292	277	262	246	225	197	163

Model	Motor power	Inlet/Outlet Pipe	Pressure tank	Flow m³/h	150	200	250	300	320	350	400
	KW	DN	L/Bar								
5CPS64-10-1	4.0	250	5/6	Head H(m)	19	18	16	14	13	11	8
5CPS64-10	5.5	250	5/6		27	25	23	21	20	18	15
5CPS64-20-2	7.5	250	5/6		39	36	33	29	27	23	17
5CPS64-20-1	11	250	5/10		46	44	40	36	34	30	24
5CPS64-20	11	250	5/10		53	51	47	43	41	37	30
5CPS64-30-2	15	250	5/10		66	62	56	50	47	41	32
5CPS64-30-1	15	250	5/10		73	69	63	57	54	48	39
5CPS64-30	18.5	250	5/10		80	76	70	64	61	55	46
5CPS64-40-2	18.5	250	5/16		92	87	80	71	67	60	47
5CPS64-40-1	22	250	5/16		100	94	87	78	74	67	54
5CPS64-40	22	250	5/16		107	101	94	85	81	74	61
5CPS64-50-2	26	250	5/16		121	114	105	95	89	80	64
5CPS64-50-1	26	250	5/16		128	121	112	102	96	87	71
5CPS64-50	30	250	5/25		136	129	119	109	103	94	78
5CPS64-60-2	30	250	5/25		150	142	131	118	111	101	81
5CPS64-60-1	37	250	5/25		157	149	138	125	118	10	

5 pcs Vertical Pumps Constant Pressure Booster 5CPS 50HZ

● Performance table

Model	Motor power	Inlet/Outlet Pipe	Pressure tank	Flow m³/h	250	300	350	400	450	500	550
	KW	DN	L/Bar								
5CPS90-10-1	5.5	250	5/6	Head H(m)	22	19	17	16	13	10	6
5CPS90-10	7.5	250	5/6		25	24	22	21	19	16	12
5CPS90-20-2	11	250	5/6		41	39	36	32	28	22	15
5CPS90-20	15	250	5/10		53	50	47	44	40	36	30
5CPS90-30-2	18.5	250	5/10		68	65	60	55	49	41	32
5CPS90-30	22	250	5/10		81	77	72	67	62	55	48
5CPS90-40-2	26	250	5/10		98	93	87	80	72	62	50
5CPS90-40	30	250	5/10		110	105	100	92	84	76	66
5CPS90-50-2	37	250	5/16		126	120	113	104	93	81	68
5CPS90-50	37	250	5/25		139	131	124	115	106	94	83
5CPS90-60-2	45	250	5/25		155	148	139	129	117	102	86
5CPS90-60	45	250	5/25		168	160	150	141	130	117	103

Model	Motor power	Inlet/Outlet Pipe	Pressure tank	Flow m³/h	300	350	400	450	500	550	600	650	700	750
	KW	DN	L/Bar											
5CPS120-10	11	300	5/6	Head H(m)	22	21.8	21.6	21	20.5	19.5	18.5	17	16	15
5CPS120-20-2	15	300	5/6		34	33.6	33	31	30.2	30	28.5	27	25	24
5CPS120-20-1	18.5	300	5/6		41	40	39.5	38.5	37	36.5	34.5	32.5	30	27.5
5CPS120-20	22	300	5/10		46	45	44.5	43.5	42.4	41	40	38	36	33.5
5CPS120-30-2	26	300	5/10		57	56	55	53.5	52	51	49	46.5	43.5	41
5CPS120-30-1	30	300	5/10		64	63	62	60	58.5	57.5	55.5	52	49	46
5CPS120-30	30	300	5/10		69.5	68.5	67.5	66	64.4	62.5	61	57.5	54.5	51
5CPS120-40-2	37	300	5/10		80.5	79	78	76	73.5	72	69	66	61.5	58
5CPS120-40-1	37	300	5/16		87	86	84.5	82	80	78	76	72	68	64.5
5CPS120-40	45	300	5/16		92.5	91	90	88	85.5	83	81	77	73	68.5
5CPS120-50-2	45	300	5/16		104.5	103	101	99	96	93	90	85.5	80.5	75.5
5CPS120-50-1	45	300	5/16		110.5	109	107.5	105	102	100	97	92	86.5	83
5CPS120-50	55	300	5/16		115.5	114	113	110	107.5	104.5	101.5	96	91	86
5CPS120-60-2	55	300	5/16		128	125.5	123	121	117.3	113.5	110	104.5	98.5	92.5
5CPS120-60-1	55	300	5/16		134	132	130.5	127	124	121	118	111	105	100
5CPS120-6	75	300	5/25		139	137	135	132	128.8	126	123	116	110	104
5CPS120-70-2	75	300	5/25		151	148	145.5	143	138.6	134	130	123.5	116.5	109
5CPS120-70-1	75	300	5/25		156.5	154	152	148.5	144.5	141	137.5	130	123	116.5
5CPS120-70	75	300	5/25	162.5	160.5	158.5	155	151	148	145	137	129	123	

5 pcs Vertical Pumps Constant Pressure Booster 5CPS 50HZ

● Performance table

Model	Motor power	Inlet/Outlet Pipe	Pressure tank	Flow m³/h	400	450	500	550	600	650	700	750	800	850	900
	KW	DN	L/Bar												
5CPS150-10-1	11	300	5/6	Head H(m)	18.3	17.8	17.3	17	16	15	14	12.5	11	10	8.5
5CPS150-10	15	300	5/6		24	23	22.5	22	21.5	20.5	20	18.5	17	16	15
5CPS150-20-2	18.5	300	5/6		37	35.5	34	33	32	31	29	27.5	26	23	21
5CPS150-20-1	22	300	5/10		44.3	43	42	40	39	38.5	37.5	35	33	30	27
5CPS150-20	26	300	5/10		50	49	48	47	45.5	44	42	40	37	34	32
5CPS150-30-2	30	300	5/10		63.5	61	59	57.5	56	54.5	53	49	45.5	42	39
5CPS150-30-1	37	300	5/10		70	68	67	65	63	62	60	56	53	49	45
5CPS150-30	37	300	5/10		78	76.5	75	73	70.5	68	66	63	59	55	50.5
5CPS150-40-2	45	300	5/16		89	87	84	81.5	79	77	74.5	70.5	65.5	60	56
5CPS150-40-1	45	300	5/16		96.5	94	91.5	89	86.5	84	81.5	77	72.5	67	62
5CPS150-40	55	300	5/16		104	102	100	97	95	91	88	84	79.5	74	68
5CPS150-50-2	55	300	5/16		115.5	112	109	106	102.5	100	97	92	86	79	73.5
5CPS150-50-1	75	300	5/16		122.5	119.5	117	113.5	111.5	107.5	104.5	99	93.5	87	80
5CPS150-50	75	300	5/16		130	127.5	125	121	119	115	111.5	106.5	101	94.5	86.5
5CPS150-60-2	75	300	5/16		140	137	133	130	126	121	118	112	106	98	91
5CPS150-60-1	75	300	5/25		148.5	145	141.7	137.5	135	131	127	120.5	114.5	106.5	97.5
5CPS150-60	75	300	5/25		157	153	149	145	142	139.5	137	130	123.5	116	109

Model	Motor power	Inlet/Outlet Pipe	Pressure tank	Flow m³/h	500	600	700	800	900	1000	1100	1200
	KW	DN	L/Bar									
5CPS200-10-B	18.5	350	5/6	Head H(m)	25.5	25	24	23	21.5	20	18	15.5
5CPS200-10-A	22	350	5/6		29	28.5	27.5	26.5	25.5	24	22	20
5CPS200-10	30	350	5/6		38.5	38	37.5	36.5	35	34	32.5	30
5CPS200-20-2B	37	350	5/10		53	51	49	47	44	41	37	32
5CPS200-20-2A	45	350	5/10		59.5	58	56	54	52.5	49	44.5	40.5
5CPS200-20-A	55	350	5/10		69	68	66	64	62	59	55.5	51
5CPS200-20	55	350	5/10		78.5	77.5	76	74	71.5	69	66	61.5
5CPS200-30-2B	75	350	5/16		91.5	89	86.5	83.5	79	75	70	63
5CPS200-30-A-8	75	350	5/16		95	93	90	87	83.5	79	73.5	67
5CPS200-30-2A	75	350	5/16		99.5	97.5	94.5	91.5	89	84	78.5	72
5CPS200-30-B	75	350	5/16		104.5	102.5	100	97	93	89	84.5	77.5
5CPS200-30-A	75	350	5/16		108	106	103.5	100.5	97.5	93	88	81.5
5CPS200-30	90	350	5/16		117.5	116	113.5	110.5	107	103	99	92
5CPS200-40-2B	90	350	5/16		131.5	129	125.5	121	115.5	110	103.5	94
5CPS200-40-2A	110	350	5/16		138.5	136	132	128	124	118	111	102.5
5CPS200-40-A	110	350	5/25		148	145.5	142.5	138	134	128	122	113
5CPS200-40	110	350	5/25		157.5	155.5	152.5	148	143.5	138	132.5	123.5

2 pcs Vertical Pumps Constant Pressure Booster 2CPS 60HZ

● Performance table

Model	Motor power	Inlet/Outlet Pipe	Pressure tank	Flow m³/h	14	16	18	20	22	24	26	28
	KW	DN	L/Bar									
2CPS8-20/1	0.75	65	5/6	Head H(m)	13	12	11.5	11	10.5	10	9.5	9
2CPS8-20	1.5	65	5/6		27	26	25	24	23	22	20	18
2CPS8-30	2.2	65	5/6		41	40	38	37	35	33	30	28
2CPS8-40	3	65	5/6		55	54	52	50	47	45	41	38
2CPS8-50	3	65	5/10		70	68	65	63	59	56	52	47
2CPS8-60	4	65	5/10		85	82	78	76	72	68	62	57
2CPS8-80	5.5	65	5/16		115	110	105	101	97	91	84	75
2CPS8-100	7.5	65	5/16		145	140	132	126	122	115	105	95
2CPS8-120	7.5	65	5/25		173	167	160	152	147	132	125	115
2CPS8-140	11	65	5/25		202	195	188	179	174	163	147	135

Model	Motor power	Inlet/Outlet Pipe	Pressure tank	Flow m³/h	12	14	16	18	20	22	24	26	28	30
	KW	DN	L/Bar											
2CPS10-10	0.75	65	5/6	Head H(m)	14	13.5	13	12.5	12	11	10	9	7	6
2CPS10-20	1.5	65	5/6		29	28	27	26	25	23	22	19	18	16
2CPS10-30	2.2	65	5/6		43	42	41	39	38	36	34	31	28	25
2CPS10-40	3	65	5/10		58	57	55	53	51	48	45	41	38	34
2CPS10-50	3	65	5/10		72	71	69	66	64	61	57	52	48	43
2CPS10-60	4	65	5/10		87	86	83	80	77	74	69	64	59	52
2CPS10-70	5.5	65	5/16		102	100	97	94	90	87	81	75	69	61
2CPS10-80	5.5	65	5/16		117	114	110	108	103	99	93	86	79	70
2CPS10-90	5.5	65	5/16		131	128	125	121	116	111	105	98	90	79
2CPS10-100	7.5	65	5/16		146	143	139	135	129	123	117	109	100	89
2CPS10-120	7.5	65	5/25		175	172	167	163	156	149	140	131	120	107
2CPS10-140	11	65	5/25		204	201	196	191	183	175	164	153	140	125
2CPS10-160	11	65	5/25		233	230	224	219	210	200	188	176	160	143
2CPS10-170	11	65	5/25		248	245	239	233	224	213	200	186	170	152

Model	Motor power	Inlet/Outlet Pipe	Pressure tank	Flow m³/h	14	18	22	24	26	30	34	38
	KW	DN	L/Bar									
2CPS12-10	1.1	80	5/6	Head H(m)	17	16	15	14.5	14	12.5	11	8.5
2CPS12-20	2.2	80	5/6		35	34	32.5	32	30.5	27	24.5	20.5
2CPS12-30	4	80	5/6		52.5	51.5	50	48	46	41.5	37.5	31
2CPS12-40	5.5	80	5/10		70	68	65.5	64	61.5	55	49.5	41
2CPS12-50	5.5	80	5/10		88	86	82	80	77	70	62	51
2CPS12-60	7.5	80	5/16		107	103	99	96	92	84	75	61
2CPS12-70	7.5	80	5/16		124	121	116	112	107	97	88	71
2CPS12-80	11	80	5/16		141	137	132	128	122	111	101	82
2CPS12-100	11	80	5/25		178	173	166	161	153	140	128	104
2CPS12-120	15	80	5/25		213	208	199	193	185	169	154	125
2CPS12-140	15	80	5/25		249	242	233	225	216	198	180	145

2 pcs Vertical Pumps Constant Pressure Booster 2CPS 60HZ

● Performance table

Model	Motor power	Inlet/Outlet Pipe	Pressure tank	Flow m³/h	20	24	28	30	32	36	40	44	48	52
	KW	DN	L/Bar											
2CPS15-10	1.5	80	5/6	Head H(m)	17.5	17	16.5	16	15.5	15	14	12.5	11	9.5
2CPS15-20	3	80	5/6		36.5	36	35.5	35	34.5	33	31	29	27	24
2CPS15-30	4	80	5/6		56	55	54	53	52	50	47	44	41	37
2CPS15-40	5.5	80	5/10		75	74	72	71	69	66	62	58	54	49
2CPS15-50	7.5	80	5/10		94	92	90	88	87	83	79	74	68	62
2CPS15-60	11	80	5/16		113	111	108	107	105	101	95	89	83	76
2CPS15-70	11	80	5/16		134	131	128	126	124	118	112	105	98	90
2CPS15-80	11	80	5/16		154	151	147	144	142	136	129	121	112	103
2CPS15-90	15	80	5/25		174	171	167	164	161	155	147	138	128	118
2CPS15-100	15	80	5/25		193	190	186	182	180	172	163	154	143	131
2CPS15-120	18.5	80	5/25		232	228	223	219	216	207	197	185	172	158

Model	Motor power	Inlet/Outlet Pipe	Pressure tank	Flow m³/h	20	24	28	30	32	36	40	44	48	52
	KW	DN	L/Bar											
2CPS16-20/1	2.2	80	5/6	Head H(m)	19	18.5	18	17	16	15	14	13	11	9.5
2CPS16-20	4	80	5/6		38	37	36	35	34	32	30	27	24	24
2CPS16-30	5.5	80	5/10		57	56	55	54	51	48	45	40	36	37
2CPS16-40	7.5	80	5/10		76	75	73	72	68	64	60	54	49	49
2CPS16-50	11	80	5/16		96	94	92	90	85	80	75	68	62	62
2CPS16-60	11	80	5/16		115	113	111	108	102	96	91	82	75	76
2CPS16-70	15	80	5/16		135	132	129	126	119	113	106	96	88	90
2CPS16-80	15	80	5/25		155	152	148	144	137	130	122	111	101	103
2CPS16-100	18.5	80	5/25		197	192	187	181	174	165	153	139	127	118

Model	Motor power	Inlet/Outlet Pipe	Pressure tank	Flow m³/h	24	32	40	48	56	64	68
	KW	DN	L/Bar								
2CPS20-10	2.2	80	5/6	Head H(m)	19	18	17	15	13	10	8.5
2CPS20-20	4	80	5/6		38	37	35	32	29	24	21
2CPS20-30	5.5	80	5/10		58	56	53	50	45	38	33
2CPS20-40	7.5	80	5/10		78	75	72	67	60	51	45
2CPS20-50	11	80	5/16		98	94	90	85	75	64	57
2CPS20-60	11	80	5/16		118	113	108	102	91	77	70
2CPS20-70	15	80	5/16		138	133	127	119	107	91	83
2CPS20-80	15	80	5/25		158	153	146	137	123	105	96
2CPS20-100	18.5	80	5/25		198	193	185	172	155	133	122

Model	Motor power	Inlet/Outlet Pipe	Pressure tank	Flow m³/h	40	48	56	64	72	80	88	96
	KW	DN	L/Bar									
2CPS32-10-1	3	100	5/6	Head H(m)	20	19	18	17	15	13	10	7
2CPS32-10	4	100	5/6		26	25	24	23	21	19	17	14
2CPS32-20-2	5.5	100	5/6		41	40	38	35	31	27	22	17
2CPS32-20	7.5	100	5/10		52	50	48	45	41	37	33	27
2CPS32-30-2	7.5	100	5/10		67	64	61	57	52	46	39	31
2CPS32-30	11	100	5/10		78	75	71	67	62	56	50	40
2CPS32-40-2	11	100	5/16		94	91	87	81	73	65	56	45
2CPS32-40	15	100	5/16		104	101	96	91	83	75	66	55
2CPS32-50-2	15	100	5/16		119	115	109	102	94	84	73	59
2CPS32-50	18.5	100	5/16		130	125	119	112	104	94	83	69
2CPS32-60-2	18.5	100	5/16		145	140	134	126	116	104	90	74
2CPS32-60	18.5	100	5/25		155	150	144	136	126	114	100	81
2CPS32-70-2	22	100	5/25		172	166	158	149	137	123	106	86
2CPS32-70	22	100	5/25		182	176	168	159	148	133	118	97
2CPS32-80-2	22	100	5/25		196	190	182	172	159	143	124	102
2CPS32-80	30	100	5/25		208	201	192	181	167	152	132	111
2CPS32-90-2	30	100	5/25		223	216	206	194	179	162	142	117
2CPS32-90	30	100	5/25		234	226	216	204	189	172	152	127
2CPS32-100-2	30	100	5/25		248	241	231	217	201	181	159	133

2 pcs Vertical Pumps Constant Pressure Booster 2CPS 60HZ

● Performance table

Model	Motor power	Inlet/Outlet Pipe	Pressure tank	Flow m³/h	60	70	80	84	90	100	110	120	130	
	KW	DN	L/Bar											
2CPS45-10-1	5.5	125	5/6	Head H(m)	29	28	27	26	25	23	21	19	16	
2CPS45-10	7.5	125	5/6		34	33	32	31.5	30	29	27	25	22	
2CPS45-20-2	11	125	5/10		57	55	53	52	49	46	43	38	33	
2CPS45-20	15	125	5/10		69	67	65	63	61	59	55	50	44	
2CPS45-30-2	18.5	125	5/10		90	88	85	83	80	75	72	63	55	
2CPS45-30	18.5	125	5/16		102	100	97	95	92	88	82	76	68	
2CPS45-40-2	22	125	5/16		125	121	118	115	112	105	98	89	78	
2CPS45-40	30	125	5/16		136	133	129	126	123	117	112	102	89	
2CPS45-50-2	30	125	5/25		159	154	149	146	142	134	121	115	99	
2CPS45-50	30	125	5/25		171	166	161	158	154	145	138	126	112	
2CPS45-60-2	37	125	5/25		194	188	182	178	173	163	155	139	122	
2CPS45-60	37	125	5/25		205	200	193	190	186	176	166	152	134	
2CPS45-70-2	45	125	5/25		227	220	213	210	205	193	182	165	144	
2CPS45-70	45	125	5/25		239	232	226	221	216	204	194	178	157	

Model	Motor power	Inlet/Outlet Pipe	Pressure tank	Flow m³/h	80	100	120	130	140	160	180	200	
	KW	DN	L/Bar										
2CPS64-10-1	7.5	150	5/6	Head H(m)	26	25	23	22	21	18	14	10	
2CPS64-10	11	150	5/6		37	35	33	32	31	28	24	21	
2CPS64-20-2	15	150	5/10		53	50	47	44	42	37	31	23	
2CPS64-20	22	150	5/10		74	72	67	64	62	57	51	42	
2CPS64-30-2	22	150	5/10		93	88	80	76	72	65	56	45	
2CPS64-30	30	150	5/16		112	108	100	96	93	86	77	65	
2CPS64-40-2	37	150	5/16		130	124	115	110	103	94	83	66	
2CPS64-40	45	150	5/16		152	144	135	130	123	114	102	86	
2CPS64-50-2	45	150	5/25		172	162	151	144	137	126	112	91	

Model	Motor power	Inlet/Outlet Pipe	Pressure tank	Flow m³/h	120	140	160	170	180	200	220	240	260	
	KW	DN	L/Bar											
CPS90-10-1	7.5	150	5/6	Head H(m)	31	27	25	24	23	21	18	14	9	
CPS90-10	11	150	5/6		36	35	33	31	30	29	26	23	18	
CPS90-20-2	15	150	5/10		59	57	54	51	48	44	39	32	22	
CPS90-20-1	22	150	5/10		67	65	62	59	57	51	47	41	33	
CPS90-20	22	150	5/10		76	73	69	66	64	60	56	52	44	
CPS90-30-2	30	150	5/16		98	94	88	85	82	75	69	59	46	
CPS90-30-1	37	150	5/16		108	104	98	94	90	83	78	69	56	
CPS90-30	45	150	5/16		116	111	105	102	97	93	88	79	69	
CPS90-40-2	45	150	5/16		141	135	128	124	118	109	102	89	72	

2 pcs Vertical Pumps Constant Pressure Booster 2CPS 60HZ

● Performance table

Model	Motor power	Inlet/Outlet Pipe	Pressure tank	Flow m³/h	120	140	160	180	200	220	240	260	280	300	320	
	KW	DN	L/Bar													
2CPS120-10-1	15	200	5/6	Head H(m)	26.5	26	25	24.5	23.8	23	22.5	21.5	21.3	21	20	
2CPS120-10	18.5	200	5/6		30.8	30.7	30.7	30.5	30.3	29.5	28.8	27.6	26.4	25.4	24.4	
2CPS120-20-2	30	200	5/10		51.5	50.5	49.5	47.5	46	45.5	44.8	43	41	39.7	38.5	
2CPS120-20-1	30	200	5/10		58.3	58	57.3	56	54.7	54	53	51.5	50	47.4	45	
2CPS120-20	37	200	5/10		66.3	66	65.7	65	64.4	63	62	60.7	59.6	57	54.6	
2CPS120-30-2	45	200	5/16		83	82	81	79.5	78	76	74.5	73.5	71	68.5	65	
2CPS120-30-1	45	200	5/16		91.3	91	90.4	89	87.7	86	84.4	82	80	76.7	73.3	
2CPS120-30	55	200	5/16		100.3	100	99.4	98.3	97.3	95.5	94	92	90	86.3	82.7	
2CPS120-40-2	75	200	5/16		116	115.5	114	113	111	109	105.5	104	100	97	93	
2CPS120-40-1	75	200	5/16		126	125.4	124.6	122.6	120.6	118.5	116.5	114	111.3	107	103	
2CPS120-40	75	200	5/16		134	133	132	131	129.5	127.5	125	122	119	114.5	109.5	
2CPS120-50-2	75	200	5/16		152	151	149.7	147	144	141.5	139	135.5	132	127	122	

Model	Motor power	Inlet/Outlet Pipe	Pressure tank	Flow m³/h	160	180	200	220	240	260	280	300	320	340	360
	KW	DN	L/Bar												
2CPS150-10-1	15	200	5/6	Head H(m)	26.5	26	25.7	25	24.3	23.8	23.2	22.3	21.2	19.5	18
2CPS150-10	22	200	5/6		35	34.5	34	33.6	33	32.3	31.7	30.7	29.6	28	27
2CPS150-20-2	30	200	5/10		57	55.5	53	52	51.3	50	49	48	47	45	43
2CPS150-20-1	37	200	5/10		67	65	63.5	62	61	60	58.5	56	55	53	51
2CPS150-20	45	200	5/10		75.5	74.5	73.6	72	70.4	69	67.5	65.5	63.5	61	59
2CPS150-30-2	55	200	5/16		94	92	90.5	88.4	86.4	83.8	81	80	78	75.3	72.5
2CPS150-30-1	75	200	5/16		104	102.5	100	98	96	94	92	89	87	84	80
2CPS150-30	75	200	5/16		114.4	113	111.3	109	106.5	104	101.5	99	96	93	89.4
2CPS150-40-2	75	200	5/16		133	130.3	127.6	124.6	121.7	118.3	115	112.5	110	106.3	102.5

Model	Motor power	Inlet/Outlet Pipe	Pressure tank	Flow m³/h	200	240	280	320	360	400	440	480
	KW	DN	L/Bar									
2CPS200-10-B	30	250	5/6	Head H(m)	38	37	36.5	35.5	34	33	31	29
2CPS200-10-A	37	250	5/6		43	42	41.5	40	39	38	36.5	34.5
2CPS200-10	45	250	5/10		56	55	54.5	53.5	53	52	50.5	48.5
2CPS200-20-2B	55	250	5/10		77.5	75.5	73.5	71	68.5	66	62	58.5
2CPS200-20-2A	75	250	5/10		87	85	83	81	79	77	74	70
2CPS200-20-B	75	250	5/16		95.5	93.5	92.5	90.5	88.5	86	82.5	79
2CPS200-20-A	90	250	5/16		100	98.5	97.5	95.5	0.6	91	88	84
2CPS200-20	90	250	5/16		114	112.5	111	109.5	107.5	105	101.5	98.5
2CPS200-30-2B	110	250	5/16		135	132.5	129.5	126	122.5	119	114	108.5
2CPS200-30-A-B	110	250	5/16		139	136.5	134	131	128	124	119	113.5
2CPS200-30-2A	110	250	5/16	145	142.5	140	137	133.5	130	125.5	120	

3 pcs Vertical Pumps Constant Pressure Booster 3CPS 60HZ

Main Components



No.	Name	Quantity	Remark
1	Vertical multistage pump	3	SS304/SS316
2	VFD	3	IP65 protection
3	Pressure transmitter	3	0~16bar range
4	Control cabinet with HMI	1	10" HMI
5	Inlet and outlet pipe	one set	SS304
6	Pressure guage	2	
7	Valve	9	Ball valve/butterfly valve/check valve
8	Pressure tank	1	5L
9	Base frame	1	Carbon steel

Performance table

Model	Motor power	Inlet/Outlet Pipe	Pressure tank	Flow m³/h	1.8	2.4	3	3.6	4.2	4.8	5.4	6
	KW	DN	L/Bar									
3CPS1-20	0.37	50	5/6	Head H(m)	17.5	17	16.5	16	15.5	15	14	13
3CPS1-30	0.37	50	5/6		26.5	26	25	24	23	22	21	20
3CPS1-40	0.37	50	5/6		35	34	33	32	31	30	28	26
3CPS1-50	0.55	50	5/6		43	42	41	40	39	38	35	33
3CPS1-60	0.55	50	5/10		52	51	50	48	47	45	43	39
3CPS1-70	0.75	50	5/10		60	59	58	56	55	52	50	46
3CPS1-80	0.75	50	5/10		68	67	65	64	62	59	57	53
3CPS1-90	0.75	50	5/10		76	75	74	73	71	66	64	60
3CPS1-100	1.1	50	5/16		85	84	83	81	78	74	72	67
3CPS1-110	1.1	50	5/16		95	93	90	87	85	81	78	73
3CPS1-120	1.1	50	5/16		103	102	98	96	92	88	86	79
3CPS1-130	1.1	50	5/16		112	110	107	105	100	95	93	86
3CPS1-150	1.5	50	5/16		127	125	123	121	117	112	107	99
3CPS1-170	1.5	50	5/16		144	141	139	137	132	124	120	112
3CPS1-190	2.2	50	5/25		160	157	155	153	147	141	134	124
3CPS1-210	2.2	50	5/25		177	174	172	168	162	153	147	138
3CPS1-230	2.2	50	5/25		193	190	188	184	174	167	161	152
3CPS1-250	3	50	5/25		210	207	205	202	192	184	176	164

Model	Motor power	Inlet/Outlet Pipe	Pressure tank	Flow m³/h	3	4.5	6	7.5	9	10.5	12	13.5
	KW	DN	L/Bar									
3CPS2-20	0.55	50	5/6	Head H(m)	26	24	22	21	18	16	12	9
3CPS2-30	0.75	50	5/6		39	36	33	31	27	24	19	15
3CPS2-40	1.1	50	5/10		52	48	45	42	36	32	26	20
3CPS2-50	1.1	50	5/10		65	60	57	52	46	41	32	25
3CPS2-60	1.1	50	5/10		78	74	69	63	56	49	40	30
3CPS2-70	1.5	50	5/16		91	86	81	74	66	57	47	35
3CPS2-90	2.2	50	5/16		117	111	104	95	86	75	61	45
3CPS2-110	2.2	50	5/16		143	136	128	116	104	90	75	56
3CPS2-130	3	50	5/25		171	163	152	139	126	108	90	66
3CPS2-150	3	50	5/25		195	186	176	160	142	125	103	77
3CPS2-180	4	50	5/25		234	228	212	195	171	151	126	94

3 pcs Vertical Pumps Constant Pressure Booster 3CPS 60HZ

Performance table

Model	Motor power	Inlet/Outlet Pipe	Pressure tank	Flow m³/h	4.5	6	7.5	9	10.5	12	13.5	15
	KW	DN	L/Bar									
3CPS3-20	0.37	50	5/6	Head H(m)	17.5	16	15	14	13	11	9	8
3CPS3-30	0.55	50	5/6		26.5	25	24	23	20	18	15	12
3CPS3-40	0.55	50	5/6		35	34	32	30	27	25	20	17
3CPS3-50	0.75	50	5/10		44	42	40	38	33	31	26	23
3CPS3-60	1.1	50	5/10		51	50	48	45	40	37	32	27
3CPS3-70	1.1	50	5/10		61	59	56	52	46	43	38	31
3CPS3-80	1.1	50	5/10		70	67	64	61	53	49	44	35
3CPS3-90	1.5	50	5/16		78	77	72	68	60	56	50	40
3CPS3-100	1.5	50	5/16		87	84	81	76	68	63	55	44
3CPS3-110	1.5	50	5/16		96	92	87	82	74	69	59	48
3CPS3-120	2.2	50	5/16		104	100	96	90	79	73	63	52
3CPS3-130	2.2	50	5/16		112	109	104	98	86	80	69	57
3CPS3-150	2.2	50	5/16		129	126	120	112	99	93	81	65
3CPS3-170	2.2	50	5/16		147	143	137	128	114	106	91	74
3CPS3-190	3	50	5/25		165	160	153	142	126	118	102	82
3CPS3-210	3	50	5/25		183	178	170	160	141	129	112	91
3CPS3-230	3	50	5/25		200	194	185	174	154	142	122	98
3CPS3-250	4	50	5/25		217	211	202	187	167	154	134	108

Model	Motor power	Inlet/Outlet Pipe	Pressure tank	Flow m³/h	7.5	9	12	15	18	21	24
	KW	DN	L/Bar								
3CPS4-20	0.75	65	5/6	Head H(m)	26	25	23	21	19	16	14
3CPS4-30	1.1	65	5/6		39	38	36	32	28	24	21
3CPS4-40	1.5	65	5/6		52	50	48	44	38	35	31
3CPS4-50	2.2	65	5/10		65	62	60	55	49	44	39
3CPS4-60	2.2	65	5/10		78	75	72	67	59	54	47
3CPS4-70	3	65	5/16		92	88	84	78	69	62	55
3CPS4-80	3	65	5/16		104	100	95	90	79	72	63
3CPS4-100	4	65	5/16		130	125	120	113	102	90	80
3CPS4-120	4	65	5/25		156	150	145	136	122	109	96
3CPS4-140	5.5	65	5/25		182	176	170	159	145	129	112
3CPS4-160	5.5	65	5/25		207	201	196	183	165	146	128

Model	Motor power	Inlet/Outlet Pipe	Pressure tank	Flow m³/h	9	12	15	18	21	24	27
	KW	DN	L/Bar								
3CPS5-20	0.55	65	5/6	Head H(m)	18	17	16	15	13	11	9
3CPS5-30	1.1	65	5/6		27	26	24	22	21	17	14
3CPS5-40	1.1	65	5/6		37	35	32	30	27	23	20
3CPS5-50	1.5	65	5/6		46	44	41	38	35	30	25
3CPS5-60	2.2	65	5/10		55	52	49	46	41	37	31
3CPS5-70	2.2	65	5/10		64	61	58	54	48	43	37
3CPS5-80	2.2	65	5/10		73	70	67	62	56	49	42
3CPS5-90	2.2	65	5/16		82	79	75	70	64	56	48
3CPS5-100	3	65	5/16		92	88	84	78	72	63	54
3CPS5-110	3	65	5/16		101	97	92	86	78	70	60
3CPS5-120	3	65	5/16		110	106	101	94	86	77	66
3CPS5-130	4	65	5/16		120	115	109	103	95	84	72
3CPS5-140	4	65	5/16		130	124	118	111	102	91	78
3CPS5-150	4	65	5/16		139	133	127	119	108	98	85
3CPS5-160	4	65	5/16		148	142	135	127	117	105	91
3CPS5-180	5.5	65	5/25		167	161	153	144	134	119	104
3CPS5-200	5.5	65	5/25		186	180	171	162	147	133	116
3CPS5-220	5.5	65	5/25		205	198	189	179	163	147	129
3CPS5-240	7.5	65	5/25		224	216	207	195	180	162	142

3 pcs Vertical Pumps Constant Pressure Booster 3CPS 60HZ

● Performance table

Model	Motor power	Inlet/Outlet Pipe	Pressure tank	Flow m ³ /h	21	24	27	30	33	36	39	42
	KW	DN	L/Bar									
3CPS8-20/1	0.75	80	5/6	Head H(m)	13	12	11.5	11	10.5	10	9.5	9
3CPS8-20	1.5	80	5/6		27	26	25	24	23	22	20	18
3CPS8-30	2.2	80	5/6		41	40	38	37	35	33	30	28
3CPS8-40	3	80	5/6		55	54	52	50	47	45	41	38
3CPS8-50	3	80	5/10		70	68	65	63	59	56	52	47
3CPS8-60	4	80	5/10		85	82	78	76	72	68	62	57
3CPS8-80	5.5	80	5/16		115	110	105	101	97	91	84	75
3CPS8-100	7.5	80	5/16		145	140	132	126	122	115	105	95
3CPS8-120	7.5	80	5/25		173	167	160	152	147	132	125	115
3CPS8-140	11	80	5/25		202	195	188	179	174	163	147	135

Model	Motor power	Inlet/Outlet Pipe	Pressure tank	Flow m ³ /h	18	21	24	27	30	33	36	39	42	45
	KW	DN	L/Bar											
3CPS10-10	0.75	80	5/6	Head H(m)	14	13.5	13	12.5	12	11	10	9	7	6
3CPS10-20	1.5	80	5/6		29	28	27	26	25	23	22	19	18	16
3CPS10-30	2.2	80	5/6		43	42	41	39	38	36	34	31	28	25
3CPS10-40	3	80	5/10		58	57	55	53	51	48	45	41	38	34
3CPS10-50	3	80	5/10		72	71	69	66	64	61	57	52	48	43
3CPS10-60	4	80	5/10		87	86	83	80	77	74	69	64	59	52
3CPS10-70	5.5	80	5/16		102	100	97	94	90	87	81	75	69	61
3CPS10-80	5.5	80	5/16		117	114	110	108	103	99	93	86	79	70
3CPS10-90	5.5	80	5/16		131	128	125	121	116	111	105	98	90	79
3CPS10-100	7.5	80	5/16		146	143	139	135	129	123	117	109	100	89
3CPS10-120	7.5	80	5/25		175	172	167	163	156	149	140	131	120	107
3CPS10-140	11	80	5/25		204	201	196	191	183	175	164	153	140	125
3CPS10-160	11	80	5/25		233	230	224	219	210	200	188	176	160	143
3CPS10-170	11	80	5/25		248	245	239	233	224	213	200	186	170	152

Model	Motor power	Inlet/Outlet Pipe	Pressure tank	Flow m ³ /h	21	27	33	36	39	45	51	57
	KW	DN	L/Bar									
3CPS12-10	1.1	100	5/6	Head H(m)	17	16	15	14.5	14	12.5	11	8.5
3CPS12-20	2.2	100	5/6		35	34	32.5	32	30.5	27	24.5	20.5
3CPS12-30	4	100	5/6		52.5	51.5	50	48	46	41.5	37.5	31
3CPS12-40	5.5	100	5/10		70	68	65.5	64	61.5	55	49.5	41
3CPS12-50	5.5	100	5/10		88	86	82	80	77	70	62	51
3CPS12-60	7.5	100	5/16		107	103	99	96	92	84	75	61
3CPS12-70	7.5	100	5/16		124	121	116	112	107	97	88	71
3CPS12-80	11	100	5/16		141	137	132	128	122	111	101	82
3CPS12-100	11	100	5/25		178	173	166	161	153	140	128	104
3CPS12-120	15	100	5/25		213	208	199	193	185	169	154	125
3CPS12-140	15	100	5/25		249	242	233	225	216	198	180	145

3 pcs Vertical Pumps Constant Pressure Booster 3CPS 60HZ

● Performance table

Model	Motor power	Inlet/Outlet Pipe	Pressure tank	Flow m ³ /h	30	36	42	45	48	54	60	66	72	78
	KW	DN	L/Bar											
3CPS15-10	1.5	100	5/6	Head H(m)	17.5	17	16.5	16	15.5	15	14	12.5	11	9.5
3CPS15-20	3	100	5/6		36.5	36	35.5	35	34.5	33	31	29	27	24
3CPS15-30	4	100	5/6		56	55	54	53	52	50	47	44	41	37
3CPS15-40	5.5	100	5/10		75	74	72	71	69	66	62	58	54	49
3CPS15-50	7.5	100	5/10		94	92	90	88	87	83	79	74	68	62
3CPS15-60	11	100	5/16		113	111	108	107	105	101	95	89	83	76
3CPS15-70	11	100	5/16		134	131	128	126	124	118	112	105	98	90
3CPS15-80	11	100	5/16		154	151	147	144	142	136	129	121	112	103
3CPS15-90	15	100	5/25		174	171	167	164	161	155	147	138	128	118
3CPS15-100	15	100	5/25		193	190	186	182	180	172	163	154	143	131
3CPS15-120	18.5	100	5/25		232	228	223	219	216	207	197	185	172	158

Model	Motor power	Inlet/Outlet Pipe	Pressure tank	Flow m ³ /h	30	36	42	45	48	54	60	66	72	78
	KW	DN	L/Bar											
3CPS16-20/1	2.2	100	5/6	Head H(m)	19	18.5	18	17	16	15	14	13	11	9.5
3CPS16-20	4	100	5/6		38	37	36	35	34	32	30	27	24	24
3CPS16-30	5.5	100	5/10		57	56	55	54	51	48	45	40	36	37
3CPS16-40	7.5	100	5/10		76	75	73	72	68	64	60	54	49	49
3CPS16-50	11	100	5/16		96	94	92	90	85	80	75	68	62	62
3CPS16-60	11	100	5/16		115	113	111	108	102	96	91	82	75	76
3CPS16-70	15	100	5/16		135	132	129	126	119	113	106	96	88	90
3CPS16-80	15	100	5/25		155	152	148	144	137	130	122	111	101	103
3CPS16-100	18.5	100	5/25		197	192	187	181	174	165	153	139	127	118

Model	Motor power	Inlet/Outlet Pipe	Pressure tank	Flow m ³ /h	36	48	60	72	84	96	102
	KW	DN	L/Bar								
3CPS20-10	2.2	125	5/6	Head H(m)	19	18	17	15	13	10	8.5
3CPS20-20	4	125	5/6		38	37	35	32	29	24	21
3CPS20-30	5.5	125	5/10		58	56	53	50	45	38	33
3CPS20-40	7.5	125	5/10		78	75	72	67	60	51	45
3CPS20-50	11	125	5/16		98	94	90	85	75	64	57
3CPS20-60	11	125	5/16		118	113	108	102	91	77	70
3CPS20-70	15	125	5/16		138	133	127	119	107	91	83
3CPS20-80	15	125	5/25		158	153	146	137	123	105	96
3CPS20-100	18.5	125	5/25		198	193	185	172	155	133	122

Model	Motor power	Inlet/Outlet Pipe	Pressure tank	Flow m ³ /h	60	72	84	96	108	120	132	144
	KW	DN	L/Bar									
3CPS32-10-1	3	125	5/6	Head H(m)	20	19	18	17	15	13	10	7
3CPS32-10	4	125	5/6		26	25	24	23	21	19	17	14
3CPS32-20-2	5.5	125	5/6		41	40	38	35	31	27	22	17
3CPS32-20	7.5	125	5/10		52	50	48	45	41	37	33	27
3CPS32-30-2	7.5	125	5/10		67	64	61	57	52	46	39	31
3CPS32-30	11	125	5/10		78	75	71	67	62	56	50	40
3CPS32-40-2	11	125	5/16		94	91	87	81	73	65	56	45
3CPS32-40	15	125	5/16		104	101	96	91	83	75	66	55
3CPS32-50-2	15	125	5/16		119	115	109	102	94	84	73	59
3CPS32-50	18.5	125	5/16		130	125	119	112	104	94	83	69
3CPS32-60-2	18.5	125	5/16		145	140	134	126	116	104	90	74
3CPS32-60	18.5	125	5/25		155	150	144	136	126	114	100	81
3CPS32-70-2	22	125	5/25		172	166	158	149	137	123	106	86
3CPS32-70	22	125	5/25		182	176	168	159	148	133	118	97
3CPS32-80-2	22	125	5/25		196	190	182	172	159	143	124	102
3CPS32-80	30	125	5/25		208	201	192	181	167	152	132	111
3CPS32-90-2	30	125	5/25		223	216	206	194	179	162	142	117
3CPS32-90	30	125	5/25		234	226	216	204	189	172	152	127
3CPS32-100-2	30	125	5/25		248	241	231	217	201	181	159	133

3 pcs Vertical Pumps Constant Pressure Booster 3CPS 60HZ

● Performance table

Model	Motor power	Inlet/Outlet Pipe	Pressure tank	Flow m³/h	90	105	120	126	135	150	165	180	195
	KW	DN	L/Bar										
3CPS45-10-1	5.5	150	5/6	Head H(m)	29	28	27	26	25	23	21	19	16
3CPS45-10	7.5	150	5/6		34	33	32	31.5	30	29	27	25	22
3CPS45-20-2	11	150	5/10		57	55	53	52	49	46	43	38	33
3CPS45-20	15	150	5/10		69	67	65	63	61	59	55	50	44
3CPS45-30-2	18.5	150	5/10		90	88	85	83	80	75	72	63	55
3CPS45-30	18.5	150	5/16		102	100	97	95	92	88	82	76	68
3CPS45-40-2	22	150	5/16		125	121	118	115	112	105	98	89	78
3CPS45-40	30	150	5/16		136	133	129	126	123	117	112	102	89
3CPS45-50-2	30	150	5/25		159	154	149	146	142	134	121	115	99
3CPS45-50	30	150	5/25		171	166	161	158	154	145	138	126	112
3CPS45-60-2	37	150	5/25		194	188	182	178	173	163	155	139	122
3CPS45-60	37	150	5/25		205	200	193	190	186	176	166	152	134
3CPS45-70-2	45	150	5/25		227	220	213	210	205	193	182	165	144
3CPS45-70	45	150	5/25		239	232	226	221	216	204	194	178	157

Model	Motor power	Inlet/Outlet Pipe	Pressure tank	Flow m³/h	120	150	180	195	210	240	270	300
	KW	DN	L/Bar									
3CPS64-10-1	7.5	200	5/6	Head H(m)	26	25	23	22	21	18	14	10
3CPS64-10	11	200	5/6		37	35	33	32	31	28	24	21
3CPS64-20-2	15	200	5/10		53	50	47	44	42	37	31	23
3CPS64-20	22	200	5/10		74	72	67	64	62	57	51	42
3CPS64-30-2	22	200	5/10		93	88	80	76	72	65	56	45
3CPS64-30	30	200	5/16		112	108	100	96	93	86	77	65
3CPS64-40-2	37	200	5/16		130	124	115	110	103	94	83	66
3CPS64-40	45	200	5/16		152	144	135	130	123	114	102	86
3CPS64-50-2	45	200	5/25		172	162	151	144	137	126	112	91

Model	Motor power	Inlet/Outlet Pipe	Pressure tank	Flow m³/h	180	210	240	255	270	300	330	360	390
	KW	DN	L/Bar										
CPS90-10-1	7.5	200	5/6	Head H(m)	31	27	25	24	23	21	18	14	9
CPS90-10	11	200	5/6		36	35	33	31	30	29	26	23	18
CPS90-20-2	15	200	5/10		59	57	54	51	48	44	39	32	22
CPS90-20-1	22	200	5/10		67	65	62	59	57	51	47	41	33
CPS90-20	22	200	5/10		76	73	69	66	64	60	56	52	44
CPS90-30-2	30	200	5/16		98	94	88	85	82	75	69	59	46
CPS90-30-1	37	200	5/16		108	104	98	94	90	83	78	69	56
CPS90-30	45	200	5/16		116	111	105	102	97	93	88	79	69
CPS90-40-2	45	200	5/16		141	135	128	124	118	109	102	89	72

3 pcs Vertical Pumps Constant Pressure Booster 3CPS 60HZ

● Performance table

Model	Motor power	Inlet/Outlet Pipe	Pressure tank	Flow m³/h	120	140	160	180	200	220	240	260	280	300	320
	KW	DN	L/Bar												
2CPS120-10-1	15	250	5/6	Head H(m)	26.5	26	25	24.5	23.8	23	22.5	21.5	21.3	21	20
2CPS120-10	18.5	250	5/6		30.8	30.7	30.7	30.5	30.3	29.5	28.8	27.6	26.4	25.4	24.4
2CPS120-20-2	30	250	5/10		51.5	50.5	49.5	47.5	46	45.5	44.8	43	41	39.7	38.5
2CPS120-20-1	30	250	5/10		58.3	58	57.3	56	54.7	54	53	51.5	50	47.4	45
2CPS120-20	37	250	5/10		66.3	66	65.7	65	64.4	63	62	60.7	59.6	57	54.6
2CPS120-30-2	45	250	5/16		83	82	81	79.5	78	76	74.5	73.5	71	68.5	65
2CPS120-30-1	45	250	5/16		91.3	91	90.4	89	87.7	86	84.4	82	80	76.7	73.3
2CPS120-30	55	250	5/16		100.3	100	99.4	98.3	97.3	95.5	94	92	90	86.3	82.7
2CPS120-40-2	75	250	5/16		116	115.5	114	113	111	109	105.5	104	100	97	93
2CPS120-40-1	75	250	5/16		126	125.4	124.6	122.6	120.6	118.5	116.5	114	111.3	107	103
2CPS120-40	75	250	5/16		134	133	132	131	129.5	127.5	125	122	119	114.5	109.5
2CPS120-50-2	75	250	5/16		152	151	149.7	147	144	141.5	139	135.5	132	127	122

Model	Motor power	Inlet/Outlet Pipe	Pressure tank	Flow m³/h	240	270	300	330	360	390	420	450	480	510	540
	KW	DN	L/Bar												
3CPS150-10-1	15	250	5/6	Head H(m)	26.5	26	25.7	25	24.3	23.8	23.2	22.3	21.2	19.5	18
3CPS150-10	22	250	5/6		35	34.5	34	33.6	33	32.3	31.7	30.7	29.6	28	27
3CPS150-20-2	30	250	5/10		57	55.5	53	52	51.3	50	49	48	47	45	43
3CPS150-20-1	37	250	5/10		67	65	63.5	62	61	60	58.5	56	55	53	51
3CPS150-20	45	250	5/10		75.5	74.5	73.6	72	70.4	69	67.5	65.5	63.5	61	59
3CPS150-30-2	55	250	5/16		94	92	90.5	88.4	86.4	83.8	81	80	78	75.3	72.5
3CPS150-30-1	75	250	5/16		104	102.5	100	98	96	94	92	89	87	84	80
3CPS150-30	75	250	5/16		114.4	113	111.3	109	106.5	104	101.5	99	96	93	89.4
3CPS150-40-2	75	250	5/16		133	130.3	127.6	124.6	121.7	118.3	115	112.5	110	106.3	102.5

4 pcs Vertical Pumps Constant Pressure Booster 4CPS 60HZ

Main Components



No.	Name	Quantity	Remark
1	Vertical multistage pump	4	SS304/SS316
2	VFD	4	IP65 protection
3	Pressure transmitter	3	0~16bar range
4	Control cabinet with HMI	1	10" HMI
5	Inlet and outlet pipe	one set	SS304
6	Pressure guage	2	
7	Valve	12	Ball valve/butterfly valve/check valve
8	Pressure tank	1	5L
9	Base frame	1	Carbon steel

Performance table

Model	Motor power	Inlet/Outlet Pipe	Pressure tank	Flow m³/h	2.4	3.2	4	4.8	5.6	6.4	7.2	8
	KW	DN	L/Bar									
4CPS1-20	0.37	50	5/6	Head H(m)	17.5	17	16.5	16	15.5	15	14	13
4CPS1-30	0.37	50	5/6		26.5	26	25	24	23	22	21	20
4CPS1-40	0.37	50	5/6		35	34	33	32	31	30	28	26
4CPS1-50	0.55	50	5/6		43	42	41	40	39	38	35	33
4CPS1-60	0.55	50	5/10		52	51	50	48	47	45	43	39
4CPS1-70	0.75	50	5/10		60	59	58	56	55	52	50	46
4CPS1-80	0.75	50	5/10		68	67	65	64	62	59	57	53
4CPS1-90	0.75	50	5/10		76	75	74	73	71	66	64	60
4CPS1-100	1.1	50	5/16		85	84	83	81	78	74	72	67
4CPS1-110	1.1	50	5/16		95	93	90	87	85	81	78	73
4CPS1-120	1.1	50	5/16		103	102	98	96	92	88	86	79
4CPS1-130	1.1	50	5/16		112	110	107	105	100	95	93	86
4CPS1-150	1.5	50	5/16		127	125	123	121	117	112	107	99
4CPS1-170	1.5	50	5/16		144	141	139	137	132	124	120	112
4CPS1-190	2.2	50	5/25		160	157	155	153	147	141	134	124
4CPS1-210	2.2	50	5/25		177	174	172	168	162	153	147	138
4CPS1-230	2.2	50	5/25		193	190	188	184	174	167	161	152
4CPS1-250	3	50	5/25		210	207	205	202	192	184	176	164

Model	Motor power	Inlet/Outlet Pipe	Pressure tank	Flow m³/h	4	6	8	10	12	14	16	18
	KW	DN	L/Bar									
4CPS2-20	0.55	50	5/6	Head H(m)	26	24	22	21	18	16	12	9
4CPS2-30	0.75	50	5/6		39	36	33	31	27	24	19	15
4CPS2-40	1.1	50	5/10		52	48	45	42	36	32	26	20
4CPS2-50	1.1	50	5/10		65	60	57	52	46	41	32	25
4CPS2-60	1.1	50	5/10		78	74	69	63	56	49	40	30
4CPS2-70	1.5	50	5/16		91	86	81	74	66	57	47	35
4CPS2-90	2.2	50	5/16		117	111	104	95	86	75	61	45
4CPS2-110	2.2	50	5/16		143	136	128	116	104	90	75	56
4CPS2-130	3	50	5/25		171	163	152	139	126	108	90	66
4CPS2-150	3	50	5/25		195	186	176	160	142	125	103	77
4CPS2-180	4	50	5/25		234	228	212	195	171	151	126	94

4 pcs Vertical Pumps Constant Pressure Booster 4CPS 60HZ

Performance table

Model	Motor power	Inlet/Outlet Pipe	Pressure tank	Flow m³/h	6	8	10	12	14	16	18	20
	KW	DN	L/Bar									
4CPS3-20	0.37	65	5/6	Head H(m)	17.5	16	15	14	13	11	9	8
4CPS3-30	0.55	65	5/6		26.5	25	24	23	20	18	15	12
4CPS3-40	0.55	65	5/6		35	34	32	30	27	25	20	17
4CPS3-50	0.75	65	5/10		44	42	40	38	33	31	26	23
4CPS3-60	1.1	65	5/10		51	50	48	45	40	37	32	27
4CPS3-70	1.1	65	5/10		61	59	56	52	46	43	38	31
4CPS3-80	1.1	65	5/10		70	67	64	61	53	49	44	35
4CPS3-90	1.5	65	5/16		78	77	72	68	60	56	50	40
4CPS3-100	1.5	65	5/16		87	84	81	76	68	63	55	44
4CPS3-110	1.5	65	5/16		96	92	87	82	74	69	59	48
4CPS3-120	2.2	65	5/16		104	100	96	90	79	73	63	52
4CPS3-130	2.2	65	5/16		112	109	104	98	86	80	69	57
4CPS3-150	2.2	65	5/16		129	126	120	112	99	93	81	65
4CPS3-170	2.2	65	5/16		147	143	137	128	114	106	91	74
4CPS3-190	3	65	5/25		165	160	153	142	126	118	102	82
4CPS3-210	3	65	5/25		183	178	170	160	141	129	112	91
4CPS3-230	3	65	5/25		200	194	185	174	154	142	122	98
4CPS3-250	4	65	5/25		217	211	202	187	167	154	134	108

Model	Motor power	Inlet/Outlet Pipe	Pressure tank	Flow m³/h	10	12	16	20	24	28	32
	KW	DN	L/Bar								
4CPS4-20	0.75	65	5/6	Head H(m)	26	25	23	21	19	16	14
4CPS4-30	1.1	65	5/6		39	38	36	32	28	24	21
4CPS4-40	1.5	65	5/6		52	50	48	44	38	35	31
4CPS4-50	2.2	65	5/10		65	62	60	55	49	44	39
4CPS4-60	2.2	65	5/10		78	75	72	67	59	54	47
4CPS4-70	3	65	5/16		92	88	84	78	69	62	55
4CPS4-80	3	65	5/16		104	100	95	90	79	72	63
4CPS4-100	4	65	5/16		130	125	120	113	102	90	80
4CPS4-120	4	65	5/25		156	150	145	136	122	109	96
4CPS4-140	5.5	65	5/25		182	176	170	159	145	129	112
4CPS4-160	5.5	65	5/25		207	201	196	183	165	146	128

Model	Motor power	Inlet/Outlet Pipe	Pressure tank	Flow m³/h	12	16	20	24	28	32	36
	KW	DN	L/Bar								
4CPS5-20	0.55	80	5/6	Head H(m)	18	17	16	15	13	11	9
4CPS5-30	1.1	80	5/6		27	26	24	22	21	17	14
4CPS5-40	1.1	80	5/6		37	35	32	30	27	23	20
4CPS5-50	1.5	80	5/6		46	44	41	38	35	30	25
4CPS5-60	2.2	80	5/10		55	52	49	46	41	37	31
4CPS5-70	2.2	80	5/10		64	61	58	54	48	43	37
4CPS5-80	2.2	80	5/10		73	70	67	62	56	49	42
4CPS5-90	2.2	80	5/16		82	79	75	70	64	56	48
4CPS5-100	3	80	5/16		92	88	84	78	72	63	54
4CPS5-110	3	80	5/16		101	97	92	86	78	70	60
4CPS5-120	3	80	5/16		110	106	101	94	86	77	66
4CPS5-130	4	80	5/16		120	115	109	103	95	84	72
4CPS5-140	4	80	5/16		130	124	118	111	102	91	78
4CPS5-150	4	80	5/16		139	133	127	119	108	98	85
4CPS5-160	4	80	5/16		148	142	135	127	117	105	91
4CPS5-180	5.5	80	5/25		167	161	153	144	134	119	104
4CPS5-200	5.5	80	5/25		186	180	171	162	147	133	116
4CPS5-220	5.5	80	5/25		205	198	189	179	163	147	129
4CPS5-240	7.5	80	5/25	224	216	207	195	180	162	142	

4 pcs Vertical Pumps Constant Pressure Booster 4CPS 50HZ

● Performance table

Model	Motor power	Inlet/Outlet Pipe	Pressure tank	Flow m³/h	28	32	36	40	44	48	52	56
	KW	DN	L/Bar									
4CPS8-20/1	0.75	100	5/6	Head H(m)	13	12	11.5	11	10.5	10	9.5	9
4CPS8-20	1.5	100	5/6		27	26	25	24	23	22	20	18
4CPS8-30	2.2	100	5/6		41	40	38	37	35	33	30	28
4CPS8-40	3	100	5/6		55	54	52	50	47	45	41	38
4CPS8-50	3	100	5/10		70	68	65	63	59	56	52	47
4CPS8-60	4	100	5/10		85	82	78	76	72	68	62	57
4CPS8-80	5.5	100	5/16		115	110	105	101	97	91	84	75
4CPS8-100	7.5	100	5/16		145	140	132	126	122	115	105	95
4CPS8-120	7.5	100	5/25		173	167	160	152	147	132	125	115
4CPS8-140	11	100	5/25		202	195	188	179	174	163	147	135

Model	Motor power	Inlet/Outlet Pipe	Pressure tank	Flow m³/h	24	28	32	36	40	44	48	52	56	60
	KW	DN	L/Bar											
4CPS10-10	0.75	100	5/6	Head H(m)	14	13.5	13	12.5	12	11	10	9	7	6
4CPS10-20	1.5	100	5/6		29	28	27	26	25	23	22	19	18	16
4CPS10-30	2.2	100	5/6		43	42	41	39	38	36	34	31	28	25
4CPS10-40	3	100	5/10		58	57	55	53	51	48	45	41	38	34
4CPS10-50	3	100	5/10		72	71	69	66	64	61	57	52	48	43
4CPS10-60	4	100	5/10		87	86	83	80	77	74	69	64	59	52
4CPS10-70	5.5	100	5/16		102	100	97	94	90	87	81	75	69	61
4CPS10-80	5.5	100	5/16		117	114	110	108	103	99	93	86	79	70
4CPS10-90	5.5	100	5/16		131	128	125	121	116	111	105	98	90	79
4CPS10-100	7.5	100	5/16		146	143	139	135	129	123	117	109	100	89
4CPS10-120	7.5	100	5/25		175	172	167	163	156	149	140	131	120	107
4CPS10-140	11	100	5/25		204	201	196	191	183	175	164	153	140	125
4CPS10-160	11	100	5/25		233	230	224	219	210	200	188	176	160	143
4CPS10-170	11	100	5/25		248	245	239	233	224	213	200	186	170	152

Model	Motor power	Inlet/Outlet Pipe	Pressure tank	Flow m³/h	28	36	44	48	52	60	68	76
	KW	DN	L/Bar									
4CPS12-10	1.1	100	5/6	Head H(m)	17	16	15	14.5	14	12.5	11	8.5
4CPS12-20	2.2	100	5/6		35	34	32.5	32	30.5	27	24.5	20.5
4CPS12-30	4	100	5/6		52.5	51.5	50	48	46	41.5	37.5	31
4CPS12-40	5.5	100	5/10		70	68	65.5	64	61.5	55	49.5	41
4CPS12-50	5.5	100	5/10		88	86	82	80	77	70	62	51
4CPS12-60	7.5	100	5/16		107	103	99	96	92	84	75	61
4CPS12-70	7.5	100	5/16		124	121	116	112	107	97	88	71
4CPS12-80	11	100	5/16		141	137	132	128	122	111	101	82
4CPS12-100	11	100	5/25		178	173	166	161	153	140	128	104
4CPS12-120	15	100	5/25		213	208	199	193	185	169	154	125
4CPS12-140	15	100	5/25		249	242	233	225	216	198	180	145

4 pcs Vertical Pumps Constant Pressure Booster 4CPS 50HZ

● Performance table

Model	Motor power	Inlet/Outlet Pipe	Pressure tank	Flow m³/h	40	48	56	60	64	72	80	88	96	104
	KW	DN	L/Bar											
4CPS15-10	1.5	125	5/6	Head H(m)	17.5	17	16.5	16	15.5	15	14	12.5	11	9.5
4CPS15-20	3	125	5/6		36.5	36	35.5	35	34.5	33	31	29	27	24
4CPS15-30	4	125	5/6		56	55	54	53	52	50	47	44	41	37
4CPS15-40	5.5	125	5/10		75	74	72	71	69	66	62	58	54	49
4CPS15-50	7.5	125	5/10		94	92	90	88	87	83	79	74	68	62
4CPS15-60	11	125	5/16		113	111	108	107	105	101	95	89	83	76
4CPS15-70	11	125	5/16		134	131	128	126	124	118	112	105	98	90
4CPS15-80	11	125	5/16		154	151	147	144	142	136	129	121	112	103
4CPS15-90	15	125	5/25		174	171	167	164	161	155	147	138	128	118
4CPS15-100	15	125	5/25		193	190	186	182	180	172	163	154	143	131
4CPS15-120	18.5	125	5/25		232	228	223	219	216	207	197	185	172	158

Model	Motor power	Inlet/Outlet Pipe	Pressure tank	Flow m³/h	40	48	56	60	64	72	80	88	96	104
	KW	DN	L/Bar											
4CPS16-20/1	2.2	125	5/6	Head H(m)	19	18.5	18	17	16	15	14	13	11	9.5
4CPS16-20	4	125	5/6		38	37	36	35	34	32	30	27	24	24
4CPS16-30	5.5	125	5/10		57	56	55	54	51	48	45	40	36	37
4CPS16-40	7.5	125	5/10		76	75	73	72	68	64	60	54	49	49
4CPS16-50	11	125	5/16		96	94	92	90	85	80	75	68	62	62
4CPS16-60	11	125	5/16		115	113	111	108	102	96	91	82	75	76
4CPS16-70	15	125	5/16		135	132	129	126	119	113	106	96	88	90
4CPS16-80	15	125	5/25		155	152	148	144	137	130	122	111	101	103
4CPS16-100	18.5	125	5/25		197	192	187	181	174	165	153	139	127	118

Model	Motor power	Inlet/Outlet Pipe	Pressure tank	Flow m³/h	48	64	80	96	112	128	136
	KW	DN	L/Bar								
4CPS20-10	2.2	125	5/6	Head H(m)	19	18	17	15	13	10	8.5
4CPS20-20	4	125	5/6		38	37	35	32	29	24	21
4CPS20-30	5.5	125	5/10		58	56	53	50	45	38	33
4CPS20-40	7.5	125	5/10		78	75	72	67	60	51	45
4CPS20-50	11	125	5/16		98	94	90	85	75	64	57
4CPS20-60	11	125	5/16		118	113	108	102	91	77	70
4CPS20-70	15	125	5/16		138	133	127	119	107	91	83
4CPS20-80	15	125	5/25		158	153	146	137	123	105	96
4CPS20-100	18.5	125	5/25		198	193	185	172	155	133	122

Model	Motor power	Inlet/Outlet Pipe	Pressure tank	Flow m³/h	80	96	112	128	144	160	176	192
	KW	DN	L/Bar									
4CPS32-10-1	3	150	5/6	Head H(m)	20	19	18	17	15	13	10	7
4CPS32-10	4	150	5/6		26	25	24	23	21	19	17	14
4CPS32-20-2	5.5	150	5/6		41	40	38	35	31	27	22	17
4CPS32-20	7.5	150	5/10		52	50	48	45	41	37	33	27
4CPS32-30-2	7.5	150	5/10		67	64	61	57	52	46	39	31
4CPS32-30	11	150	5/10		78	75	71	67	62	56	50	40
4CPS32-40-2	11	150	5/16		94	91	87	81	73	65	56	45
4CPS32-40	15	150	5/16		104	101	96	91	83	75	66	55
4CPS32-50-2	15	150	5/16		119	115	109	102	94	84	73	59
4CPS32-50	18.5	150	5/16		130	125	119	112	104	94	83	69
4CPS32-60-2	18.5	150	5/16		145	140	134	126	116	104	90	74
4CPS32-60	18.5	150	5/25		155	150	144	136	126	114	100	81
4CPS32-70-2	22	150	5/25		172	166	158	149	137	123	106	86
4CPS32-70	22	150	5/25		182	176	168	159	148	133	118	97
4CPS32-80-2	22	150	5/25		196	190	182	172	159	143	124	102
4CPS32-80	30	150	5/25		208	201	192	181	167	152	132	111
4CPS32-90-2	30	150	5/25		223	216	206	194	179	162	142	117
4CPS32-90	30	150	5/25		234	228	216	204	189	172	152	127
4CPS32-100-2	30	150	5/25		248	241	231	217	201	181	159	133

4 pcs Vertical Pumps Constant Pressure Booster 4CPS 50HZ

● Performance table

Model	Motor power	Inlet/Outlet Pipe	Pressure tank	Flow m³/h	120	140	160	168	180	200	220	240	260	
	KW	DN	L/Bar											
4CPS45-10-1	5.5	150	5/6	Head H(m)	29	28	27	26	25	23	21	19	16	
4CPS45-10	7.5	150	5/6		34	33	32	31.5	30	29	27	25	22	
4CPS45-20-2	11	150	5/10		57	55	53	52	49	46	43	38	33	
4CPS45-20	15	150	5/10		69	67	65	63	61	59	55	50	44	
4CPS45-30-2	18.5	150	5/10		90	88	85	83	80	75	72	63	55	
4CPS45-30	18.5	150	5/16		102	100	97	95	92	88	82	76	68	
4CPS45-40-2	22	150	5/16		125	121	118	115	112	105	98	89	78	
4CPS45-40	30	150	5/16		136	133	129	126	123	117	112	102	89	
4CPS45-50-2	30	150	5/25		159	154	149	146	142	134	121	115	99	
4CPS45-50	30	150	5/25		171	166	161	158	154	145	138	126	112	
4CPS45-60-2	37	150	5/25		194	188	182	178	173	163	155	139	122	
4CPS45-60	37	150	5/25		205	200	193	190	186	176	166	152	134	
4CPS45-70-2	45	150	5/25		227	220	213	210	205	193	182	165	144	
4CPS45-70	45	150	5/25		239	232	226	221	216	204	194	178	157	

Model	Motor power	Inlet/Outlet Pipe	Pressure tank	Flow m³/h	160	200	240	260	280	320	360	400	
	KW	DN	L/Bar										
4CPS64-10-1	7.5	200	5/6	Head H(m)	26	25	23	22	21	18	14	10	
4CPS64-10	11	200	5/6		37	35	33	32	31	28	24	21	21
4CPS64-20-2	15	200	5/10		53	50	47	44	42	37	31	23	
4CPS64-20	22	200	5/10		74	72	67	64	62	57	51	42	
4CPS64-30-2	22	200	5/10		93	88	80	76	72	65	56	45	
4CPS64-30	30	200	5/16		112	108	100	96	93	86	77	65	
4CPS64-40-2	37	200	5/16		130	124	115	110	103	94	83	66	
4CPS64-40	45	200	5/16		152	144	135	130	123	114	102	86	
4CPS64-50-2	45	200	5/25		172	162	151	144	137	126	112	91	

Model	Motor power	Inlet/Outlet Pipe	Pressure tank	Flow m³/h	240	280	320	340	360	400	440	480	520	
	KW	DN	L/Bar											
CPS90-10-1	7.5	200	5/6	Head H(m)	31	27	25	24	23	21	18	14	9	
CPS90-10	11	200	5/6		36	35	33	31	30	29	26	23	18	
CPS90-20-2	15	200	5/10		59	57	54	51	48	44	39	32	22	
CPS90-20-1	22	200	5/10		67	65	62	59	57	51	47	41	33	
CPS90-20	22	200	5/10		76	73	69	66	64	60	56	52	44	
CPS90-30-2	30	200	5/16		98	94	88	85	82	75	69	59	46	
CPS90-30-1	37	200	5/16		108	104	98	94	90	83	78	69	56	
CPS90-30	45	200	5/16		116	111	105	102	97	93	88	79	69	
CPS90-40-2	45	200	5/16		141	135	128	124	118	109	102	89	72	

4 pcs Vertical Pumps Constant Pressure Booster 4CPS 50HZ

● Performance table

Model	Motor power	Inlet/Outlet Pipe	Pressure tank	Flow m³/h	240	280	320	360	400	440	480	520	560	600	640	
	KW	DN	L/Bar													
4CPS120-10-1	15	250	5/6	Head H(m)	26.5	26	25	24.5	23.8	23	22.5	21.5	21.3	21	20	
4CPS120-10	18.5	250	5/6		30.8	30.7	30.7	30.5	30.3	29.5	28.8	27.6	26.4	25.4	24.4	
4CPS120-20-2	30	250	5/10		51.5	50.5	49.5	47.5	46	45.5	44.8	43	41	39.7	38.5	
4CPS120-20-1	30	250	5/10		58.3	58	57.3	56	54.7	54	53	51.5	50	47.4	45	
4CPS120-20	37	250	5/10		66.3	66	65.7	65	64.4	63	62	60.7	59.6	57	54.6	
4CPS120-30-2	45	250	5/16		83	82	81	79.5	78	76	74.5	73.5	71	68.5	65	
4CPS120-30-1	45	250	5/16		91.3	91	90.4	89	87.7	86	84.4	82	80	76.7	73.3	
4CPS120-30	55	250	5/16		100.3	100	99.4	98.3	97.3	95.5	94	92	90	86.3	82.7	
4CPS120-40-2	75	250	5/16		116	115.5	114	113	111	109	105.5	104	100	97	93	
4CPS120-40-1	75	250	5/16		126	125.4	124.6	122.6	120.6	118.5	116.5	114	111.3	107	103	
4CPS120-40	75	250	5/16		134	133	132	131	129.5	127.5	125	122	119	114.5	109.5	
4CPS120-50-2	75	250	5/16		152	151	149.7	147	144	141.5	139	135.5	132	127	122	

Model	Motor power	Inlet/Outlet Pipe	Pressure tank	Flow m³/h	320	360	400	440	480	520	560	600	640	680	720
	KW	DN	L/Bar												
4CPS150-10-1	15	250	5/6	Head H(m)	26.5	26	25.7	25	24.3	23.8	23.2	22.3	21.2	19.5	18
4CPS150-10	22	250	5/6		35	34.5	34	33.6	33	32.3	31.7	30.7	29.6	28	27
4CPS150-20-2	30	250	5/10		57	55.5	53	52	51.3	50	49	48	47	45	43
4CPS150-20-1	37	250	5/10		67	65	63.5	62	61	60	58.5	56	55	53	51
4CPS150-20	45	250	5/10		75.5	74.5	73.6	72	70.4	69	67.5	65.5	63.5	61	59
4CPS150-30-2	55	250	5/16		94	92	90.5	88.4	86.4	83.8	81	80	78	75.3	72.5
4CPS150-30-1	75	250	5/16		104	102.5	100	98	96	94	92	89	87	84	80
4CPS150-30	75	250	5/16		114.4	113	111.3	109	106.5	104	101.5	99	96	93	89.4
4CPS150-40-2	75	250	5/16		133	130.3	127.6	124.6	121.7	118.3	115	112.5	110	106.3	102.5

Model	Motor power	Inlet/Outlet Pipe	Pressure tank	Flow m³/h	400	480	560	640	720	800	880	960
	KW	DN	L/Bar									
4CPS200-10-B	30	300	5/6	Head H(m)	38	37	36.5	35.5	34	33	31	29
4CPS200-10-A	37	300	5/6		43	42	41.5	40	39	38	36.5	34.5
4CPS200-10	45	300	5/10		56	55	54.5	53.5	53	52	50.5	48.5
4CPS200-20-2B	55	300	5/10		77.5	75.5	73.5	71	68.5	66	62	58.5
4CPS200-20-2A	75	300	5/10		87	85	83	81	79	77	74	70
4CPS200-20-B	75	300	5/16		95.5	93.5	92.5	90.5	88.5	86	82.5	79
4CPS200-20-A	90	300	5/16		100	98.5	97.5	95.5	0.6	91	88	84
4CPS200-20	90	300	5/16		114	112.5	111	109.5	107.5	105	101.5	98.5
4CPS200-30-2B	110	300	5/16		135	132.5	129.5	126	122.5	119	114	108.5
4CPS200-30-A-B	110	300	5/16		139	136.5	134	131	128	124	119	113.5
4CPS200-30-2A	110	300	5/16		145	142.5	140	137	133.5	130	125.5	120

5 pcs Vertical Pumps Constant Pressure Booster 5CPS 60HZ

Main Components



No.	Name	Quantity	Remark
1	Vertical multistage pump	5	SS304/SS316
2	VFD	5	IP65 protection
3	Pressure transmitter	3	0~16bar range
4	Control cabinet with HMI	1	10" HMI
5	Inlet and outlet pipe	one set	SS304
6	Pressure guage	2	
7	Valve	15	Ball valve/butterfly valve/check valve
8	Pressure tank	1	5L
9	Base frame	1	Carbon steel

5 pcs Vertical Pumps Constant Pressure Booster 5CPS 60HZ

● Performance table

Model	Motor power	Inlet/Outlet Pipe	Pressure tank	Flow m³/h	7.5	10	12.5	15	17.5	20	22.5	25
	KW	DN	L/Bar									
5CPS3-20	0.37	65	5/6	Head H(m)	17.5	16	15	14	13	11	9	8
5CPS3-30	0.55	65	5/6		26.5	25	24	23	20	18	15	12
5CPS3-40	0.55	65	5/6		35	34	32	30	27	25	20	17
5CPS3-50	0.75	65	5/10		44	42	40	38	33	31	26	23
5CPS3-60	1.1	65	5/10		51	50	48	45	40	37	32	27
5CPS3-70	1.1	65	5/10		61	59	56	52	46	43	38	31
5CPS3-80	1.1	65	5/10		70	67	64	61	53	49	44	35
5CPS3-90	1.5	65	5/16		78	77	72	68	60	56	50	40
5CPS3-100	1.5	65	5/16		87	84	81	76	68	63	55	44
5CPS3-110	1.5	65	5/16		96	92	87	82	74	69	59	48
5CPS3-120	2.2	65	5/16		104	100	96	90	79	73	63	52
5CPS3-130	2.2	65	5/16		112	109	104	98	86	80	69	57
5CPS3-150	2.2	65	5/16		129	126	120	112	99	93	81	65
5CPS3-170	2.2	65	5/16		147	143	137	128	114	106	91	74
5CPS3-190	3	65	5/25		165	160	153	142	126	118	102	82
5CPS3-210	3	65	5/25		183	178	170	160	141	129	112	91
5CPS3-230	3	65	5/25		200	194	185	174	154	142	122	98
5CPS3-250	4	65	5/25		217	211	202	187	167	154	134	108

● Performance table

Model	Motor power	Inlet/Outlet Pipe	Pressure tank	Flow m³/h	3	4	5	6	7	8	9	10
	KW	DN	L/Bar									
5CPS1-20	0.37	50	5/6	Head H(m)	17.5	17	16.5	16	15.5	15	14	13
5CPS1-30	0.37	50	5/6		26.5	26	25	24	23	22	21	20
5CPS1-40	0.37	50	5/6		35	34	33	32	31	30	28	26
5CPS1-50	0.55	50	5/6		43	42	41	40	39	38	35	33
5CPS1-60	0.55	50	5/10		52	51	50	48	47	45	43	39
5CPS1-70	0.75	50	5/10		60	59	58	56	55	52	50	46
5CPS1-80	0.75	50	5/10		68	67	65	64	62	59	57	53
5CPS1-90	0.75	50	5/10		76	75	74	73	71	66	64	60
5CPS1-100	1.1	50	5/16		85	84	83	81	78	74	72	67
5CPS1-110	1.1	50	5/16		95	93	90	87	85	81	78	73
5CPS1-120	1.1	50	5/16		103	102	98	96	92	88	86	79
5CPS1-130	1.1	50	5/16		112	110	107	105	100	95	93	86
5CPS1-150	1.5	50	5/16		127	125	123	121	117	112	107	99
5CPS1-170	1.5	50	5/16		144	141	139	137	132	124	120	112
5CPS1-190	2.2	50	5/25		160	157	155	153	147	141	134	124
5CPS1-210	2.2	50	5/25		177	174	172	168	162	153	147	138
5CPS1-230	2.2	50	5/25		193	190	188	184	174	167	161	152
5CPS1-250	3	50	5/25		210	207	205	202	192	184	176	164

Model	Motor power	Inlet/Outlet Pipe	Pressure tank	Flow m³/h	12.5	15	20	25	30	35	40
	KW	DN	L/Bar								
5CPS4-20	0.75	80	5/6	Head H(m)	26	25	23	21	19	16	14
5CPS4-30	1.1	80	5/6		39	38	36	32	28	24	21
5CPS4-40	1.5	80	5/6		52	50	48	44	38	35	31
5CPS4-50	2.2	80	5/10		65	62	60	55	49	44	39
5CPS4-60	2.2	80	5/10		78	75	72	67	59	54	47
5CPS4-70	3	80	5/16		92	88	84	78	69	62	55
5CPS4-80	3	80	5/16		104	100	95	90	79	72	63
5CPS4-100	4	80	5/16		130	125	120	113	102	90	80
5CPS4-120	4	80	5/25		156	150	145	136	122	109	96
5CPS4-140	5.5	80	5/25		182	176	170	159	145	129	112
5CPS4-160	5.5	80	5/25		207	201	196	183	165	146	128

Model	Motor power	Inlet/Outlet Pipe	Pressure tank	Flow m³/h	5	7.5	10	12.5	15	17.5	20	22.5
	KW	DN	L/Bar									
5CPS2-20	0.55	50	5/6	Head H(m)	26	24	22	21	18	16	12	9
5CPS2-30	0.75	50	5/6		39	36	33	31	27	24	19	15
5CPS2-40	1.1	50	5/10		52	48	45	42	36	32	26	20
5CPS2-50	1.1	50	5/10		65	60	57	52	46	41	32	25
5CPS2-60	1.1	50	5/10		78	74	69	63	56	49	40	30
5CPS2-70	1.5	50	5/16		91	86	81	74	66	57	47	35
5CPS2-90	2.2	50	5/16		117	111	104	95	86	75	61	45
5CPS2-110	2.2	50	5/16		143	136	128	116	104	90	75	56
5CPS2-130	3	50	5/25		171	163	152	139	126	108	90	66
5CPS2-150	3	50	5/25		195	186	176	160	142	125	103	77
5CPS2-180	4	50	5/25		234	228	212	195	171	151	126	94

Model	Motor power	Inlet/Outlet Pipe	Pressure tank	Flow m³/h	15	20	25	30	35	40	45
	KW	DN	L/Bar								
5CPS5-20	0.55	80	5/6	Head H(m)	18	17	16	15	13	11	9
5CPS5-30	1.1	80	5/6		27	26	24	22	21	17	14
5CPS5-40	1.1	80	5/6		37	35	32	30	27	23	20
5CPS5-50	1.5	80	5/6		46	44	41	38	35	30	25
5CPS5-60	2.2	80	5/10		55	52	49	46	41	37	31
5CPS5-70	2.2	80	5/10		64	61	58	54	48	43	37
5CPS5-80	2.2	80	5/10		73	70	67	62	56	49	42
5CPS5-90	2.2	80	5/16		82	79	75	70	64	56	48
5CPS5-100	3	80	5/16		92	88	84	78	72	63	54
5CPS5-110	3	80	5/16		101	97	92	86	78	70	60
5CPS5-120	3	80	5/16		110	106	101	94	86	77	66
5CPS5-130	4	80	5/16		120	115	109	103	95	84	72
5CPS5-140	4	80	5/16		130	124	118	111	102	91	78
5CPS5-150	4	80	5/16		139	133	127	119	108	98	85
5CPS5-160	4	80	5/16		148	142	135	127	117	105	91
5CPS5-180	5.5	80	5/25		167	161	153	144	134	119	104
5CPS5-200	5.5	80	5/25		186	180	171	162	147	133	116
5CPS5-220	5.5	80	5/25		205	198	189	179	163	147	129
5CPS5-240	7.5	80	5/25		224	216	207	195	180	162	142

5 pcs Vertical Pumps Constant Pressure Booster 5CPS 60HZ

● Performance table

Model	Motor power	Inlet/Outlet Pipe	Pressure tank	Flow m³/h	35	40	45	50	55	60	65	70
	KW	DN	L/Bar									
5CPS8-20/1	0.75	100	5/6	Head H(m)	13	12	11.5	11	10.5	10	9.5	9
5CPS8-20	1.5	100	5/6		27	26	25	24	23	22	20	18
5CPS8-30	2.2	100	5/6		41	40	38	37	35	33	30	28
5CPS8-40	3	100	5/6		55	54	52	50	47	45	41	38
5CPS8-50	3	100	5/10		70	68	65	63	59	56	52	47
5CPS8-60	4	100	5/10		85	82	78	76	72	68	62	57
5CPS8-80	5.5	100	5/16		115	110	105	101	97	91	84	75
5CPS8-100	7.5	100	5/16		145	140	132	126	122	115	105	95
5CPS8-120	7.5	100	5/25		173	167	160	152	147	132	125	115
5CPS8-140	11	100	5/25		202	195	188	179	174	163	147	135

Model	Motor power	Inlet/Outlet Pipe	Pressure tank	Flow m³/h	30	35	40	45	50	55	60	65	70	75
	KW	DN	L/Bar											
5CPS10-10	0.75	100	5/6	Head H(m)	14	13.5	13	12.5	12	11	10	9	7	6
5CPS10-20	1.5	100	5/6		29	28	27	26	25	23	22	19	18	16
5CPS10-30	2.2	100	5/6		43	42	41	39	38	36	34	31	28	25
5CPS10-40	3	100	5/10		58	57	55	53	51	48	45	41	38	34
5CPS10-50	3	100	5/10		72	71	69	66	64	61	57	52	48	43
5CPS10-60	4	100	5/10		87	86	83	80	77	74	69	64	59	52
5CPS10-70	5.5	100	5/16		102	100	97	94	90	87	81	75	69	61
5CPS10-80	5.5	100	5/16		117	114	110	108	103	99	93	86	79	70
5CPS10-90	5.5	100	5/16		131	128	125	121	116	111	105	98	90	79
5CPS10-100	7.5	100	5/16		146	143	139	135	129	123	117	109	100	89
5CPS10-120	7.5	100	5/25		175	172	167	163	156	149	140	131	120	107
5CPS10-140	11	100	5/25		204	201	196	191	183	175	164	153	140	125
5CPS10-160	11	100	5/25		233	230	224	219	210	200	188	176	160	143
5CPS10-170	11	100	5/25		248	245	239	233	224	213	200	186	170	152

Model	Motor power	Inlet/Outlet Pipe	Pressure tank	Flow m³/h	35	45	55	60	65	75	85	95
	KW	DN	L/Bar									
5CPS12-10	1.1	125	5/6	Head H(m)	17	16	15	14.5	14	12.5	11	8.5
5CPS12-20	2.2	125	5/6		35	34	32.5	32	30.5	27	24.5	20.5
5CPS12-30	4	125	5/6		52.5	51.5	50	48	46	41.5	37.5	31
5CPS12-40	5.5	125	5/10		70	68	65.5	64	61.5	55	49.5	41
5CPS12-50	5.5	125	5/10		88	86	82	80	77	70	62	51
5CPS12-60	7.5	125	5/16		107	103	99	96	92	84	75	61
5CPS12-70	7.5	125	5/16		124	121	116	112	107	97	88	71
5CPS12-80	11	125	5/16		141	137	132	128	122	111	101	82
5CPS12-100	11	125	5/25		178	173	166	161	153	140	128	104
5CPS12-120	15	125	5/25		213	208	199	193	185	169	154	125
5CPS12-140	15	125	5/25		249	242	233	225	216	198	180	145

5 pcs Vertical Pumps Constant Pressure Booster 5CPS 60HZ

● Performance table

Model	Motor power	Inlet/Outlet Pipe	Pressure tank	Flow m³/h	50	60	70	75	80	90	100	110	120	130
	KW	DN	L/Bar											
5CPS15-10	1.5	125	5/6	Head H(m)	17.5	17	16.5	16	15.5	15	14	12.5	11	9.5
5CPS15-20	3	125	5/6		36.5	36	35.5	35	34.5	33	31	29	27	24
5CPS15-30	4	125	5/6		56	55	54	53	52	50	47	44	41	37
5CPS15-40	5.5	125	5/10		75	74	72	71	69	66	62	58	54	49
5CPS15-50	7.5	125	5/10		94	92	90	88	87	83	79	74	68	62
5CPS15-60	11	125	5/16		113	111	108	107	105	101	95	89	83	76
5CPS15-70	11	125	5/16		134	131	128	126	124	118	112	105	98	90
5CPS15-80	11	125	5/16		154	151	147	144	142	136	129	121	112	103
5CPS15-90	15	125	5/25		174	171	167	164	161	155	147	138	128	118
5CPS15-100	15	125	5/25		193	190	186	182	180	172	163	154	143	131
5CPS15-120	18.5	125	5/25		232	228	223	219	216	207	197	185	172	158

Model	Motor power	Inlet/Outlet Pipe	Pressure tank	Flow m³/h	50	60	70	75	80	90	100	110	120	130
	KW	DN	L/Bar											
5CPS16-20/1	2.2	125	5/6	Head H(m)	19	18.5	18	17	16	15	14	13	11	9.5
5CPS16-20	4	125	5/6		38	37	36	35	34	32	30	27	24	24
5CPS16-30	5.5	125	5/10		57	56	55	54	51	48	45	40	36	37
5CPS16-40	7.5	125	5/10		76	75	73	72	68	64	60	54	49	49
5CPS16-50	11	125	5/16		96	94	92	90	85	80	75	68	62	62
5CPS16-60	11	125	5/16		115	113	111	108	102	96	91	82	75	76
5CPS16-70	15	125	5/16		135	132	129	126	119	113	106	96	88	90
5CPS16-80	15	125	5/25		155	152	148	144	137	130	122	111	101	103
5CPS16-100	18.5	125	5/25		197	192	187	181	174	165	153	139	127	118

Model	Motor power	Inlet/Outlet Pipe	Pressure tank	Flow m³/h	60	80	100	120	140	160	170
	KW	DN	L/Bar								
5CPS20-10	2.2	150	5/6	Head H(m)	19	18	17	15	13	10	8.5
5CPS20-20	4	150	5/6		38	37	35	32	29	24	21
5CPS20-30	5.5	150	5/10		58	56	53	50	45	38	33
5CPS20-40	7.5	150	5/10		78	75	72	67	60	51	45
5CPS20-50	11	150	5/16		98	94	90	85	75	64	57
5CPS20-60	11	150	5/16		118	113	108	102	91	77	70
5CPS20-70	15	150	5/16		138	133	127	119	107	91	83
5CPS20-80	15	150	5/25		158	153	146	137	123	105	96
5CPS20-100	18.5	150	5/25		198	193	185	172	155	133	122

Model	Motor power	Inlet/Outlet Pipe	Pressure tank	Flow m³/h	100	120	140	160	180	200	220	240
	KW	DN	L/Bar									
5CPS32-10-1	3	200	5/6	Head H(m)	20	19	18	17	15	13	10	7
5CPS32-10	4	200	5/6		26	25	24	23	21	19	17	14
5CPS32-20-2	5.5	200	5/6		41	40	38	35	31	27	22	17
5CPS32-20	7.5	200	5/10		57	50	48	45	41	37	33	27
5CPS32-30-2	7.5	200	5/10		62	64	61	57	52	46	39	31
5CPS32-30	11	200	5/10		78	75	71	67	62	56	50	40
5CPS32-40-2	11	200	5/16		94	91	87	81	73	65	56	45
5CPS32-40	15	200	5/16		104	101	96	91	83	75	66	55
5CPS32-50-2	15	200	5/16		119	115	109	102	94	84	73	59
5CPS32-50	18.5	200	5/16		130	125	119	112	104	94	83	69
5CPS32-60-2	18.5	200	5/16		145	140	134	126	116	104	90	74
5CPS32-60	18.5	200	5/25		155	150	144	136	126	114	100	81
5CPS32-70-2	22	200	5/25		172	166	158	149	137	123	106	86
5CPS32-70	22	200	5/25		182	176	168	159	148	133	118	97
5CPS32-80-2	22	200	5/25		196	190	182	172	159	143	124	102
5CPS32-80	30	200	5/25		208	201	192	181	167	152	132	111
5CPS32-90-2	30	200	5/25		223	216	206	194	179	162	142	117
5CPS32-90	30	200	5/25		234	226	216	204	189	172	152	127
5CPS32-100-2	30	200	5/25		248	241	231	217	201	181	159	133

5 pcs Vertical Pumps Constant Pressure Booster 5CPS 60HZ

● Performance table

Model	Motor power	Inlet/Outlet Pipe	Pressure tank	Flow m³/h	150	175	200	210	225	250	275	300	325
	KW	DN	L/Bar										
5CPS45-10-1	5.5	200	5/6	Head H(m)	29	28	27	26	25	23	21	19	16
5CPS45-10	7.5	200	5/6		34	33	32	31.5	30	29	27	25	22
5CPS45-20-2	11	200	5/10		57	55	53	52	49	46	43	38	33
5CPS45-20	15	200	5/10		69	67	65	63	61	59	55	50	44
5CPS45-30-2	18.5	200	5/10		90	88	85	83	80	75	72	63	55
5CPS45-30	18.5	200	5/16		102	100	97	95	92	88	82	76	68
5CPS45-40-2	22	200	5/16		125	121	118	115	112	105	98	89	78
5CPS45-40	30	200	5/16		136	133	129	126	123	117	112	102	89
5CPS45-50-2	30	200	5/25		159	154	149	146	142	134	121	115	99
5CPS45-50	30	200	5/25		171	166	161	158	154	145	138	126	112
5CPS45-60-2	37	200	5/25		194	188	182	178	173	163	155	139	122
5CPS45-60	37	200	5/25		205	200	193	190	186	176	166	152	134
5CPS45-70-2	45	200	5/25		227	220	213	210	205	193	182	165	144
5CPS45-70	45	200	5/25		239	232	226	221	216	204	194	178	157

Model	Motor power	Inlet/Outlet Pipe	Pressure tank	Flow m³/h	200	250	300	325	350	400	450	500
	KW	DN	L/Bar									
5CPS64-10-1	7.5	250	5/6	Head H(m)	26	25	23	22	21	18	14	10
5CPS64-10	11	250	5/6		37	35	33	32	31	28	24	21
5CPS64-20-2	15	250	5/10		53	50	47	44	42	37	31	23
5CPS64-20	22	250	5/10		74	72	67	64	62	57	51	42
5CPS64-30-2	22	250	5/10		93	88	80	76	72	65	56	45
5CPS64-30	30	250	5/16		112	108	100	96	93	86	77	65
5CPS64-40-2	37	250	5/16		130	124	115	110	103	94	83	66
5CPS64-40	45	250	5/16		152	144	135	130	123	114	102	86
5CPS64-50-2	45	250	5/25		172	162	151	144	137	126	112	91

Model	Motor power	Inlet/Outlet Pipe	Pressure tank	Flow m³/h	300	350	400	425	450	500	550	600	650
	KW	DN	L/Bar										
5CPS90-10-1	7.5	250	5/6	Head H(m)	31	27	25	24	23	21	18	14	9
5CPS90-10	11	250	5/6		36	35	33	31	30	29	26	23	18
5CPS90-20-2	15	250	5/10		59	57	54	51	48	44	39	32	22
5CPS90-20-1	22	250	5/10		67	65	62	59	57	51	47	41	33
5CPS90-20	22	250	5/10		76	73	69	66	64	60	56	52	44
5CPS90-30-2	30	250	5/16		98	94	88	85	82	75	69	59	46
5CPS90-30-1	37	250	5/16		108	104	98	94	90	83	78	69	56
5CPS90-30	45	250	5/16		116	111	105	102	97	93	88	79	69
5CPS90-40-2	45	250	5/16		141	135	128	124	118	109	102	89	72

5 pcs Vertical Pumps Constant Pressure Booster 5CPS 60HZ

● Performance table

Model	Motor power	Inlet/Outlet Pipe	Pressure tank	Flow m³/h	300	350	400	450	500	550	600	650	700	750	800
	KW	DN	L/Bar												
5CPS120-10-1	15	300	5/6	Head H(m)	26.5	26	25	24.5	23.8	23	22.5	21.5	21.3	21	20
5CPS120-10	18.5	300	5/6		30.8	30.7	30.7	30.5	30.3	29.5	28.8	27.6	26.4	25.4	24.4
5CPS120-20-2	30	300	5/10		51.5	50.5	49.5	47.5	46	45.5	44.8	43	41	39.7	38.5
5CPS120-20-1	30	300	5/10		58.3	58	57.3	56	54.7	54	53	51.5	50	47.4	45
5CPS120-20	37	300	5/10		66.3	66	65.7	65	64.4	63	62	60.7	59.6	57	54.6
5CPS120-30-2	45	300	5/16		83	82	81	79.5	78	76	74.5	73.5	71	68.5	65
5CPS120-30-1	45	300	5/16		91.3	91	90.4	89	87.7	86	84.4	82	80	76.7	73.3
5CPS120-30	55	300	5/16		100.3	100	99.4	98.3	97.3	95.5	94	92	90	86.3	82.7
5CPS120-40-2	75	300	5/16		116	115.5	114	113	111	109	105.5	104	100	97	93
5CPS120-40-1	75	300	5/16		126	125.4	124.6	122.6	120.6	118.5	116.5	114	111.3	107	103
5CPS120-40	75	300	5/16		134	133	132	131	129.5	127.5	125	122	119	114.5	109.5
5CPS120-50-2	75	300	5/16		152	151	149.7	147	144	141.5	139	135.5	132	127	122

Model	Motor power	Inlet/Outlet Pipe	Pressure tank	Flow m³/h	400	450	500	550	600	650	700	750	800	850	900
	KW	DN	L/Bar												
5CPS150-10-1	15	300	5/6	Head H(m)	26.5	26	25.7	25	24.3	23.8	23.2	22.3	21.2	19.5	18
5CPS150-10	22	300	5/6		35	34.5	34	33.6	33	32.3	31.7	30.7	29.6	28	27
5CPS150-20-2	30	300	5/10		57	55.5	53	52	51.3	50	49	48	47	45	43
5CPS150-20-1	37	300	5/10		67	65	63.5	62	61	60	58.5	56	55	53	51
5CPS150-20	45	300	5/10		75.5	74.5	73.6	72	70.4	69	67.5	65.5	63.5	61	59
5CPS150-30-2	55	300	5/16		94	92	90.5	88.4	86.4	83.8	81	80	78	75.3	72.5
5CPS150-30-1	75	300	5/16		104	102.5	100	98	96	94	92	89	87	84	80
5CPS150-30	75	300	5/16		114.4	113	111.3	109	106.5	104	101.5	99	96	93	89.4
5CPS150-40-2	75	300	5/16		133	130.3	127.6	124.6	121.7	118.3	115	112.5	110	106.3	102.5

Model	Motor power	Inlet/Outlet Pipe	Pressure tank	Flow m³/h	500	600	700	800	900	1000	1100	1200
	KW	DN	L/Bar									
5CPS200-10-B	30	350	5/6	Head H(m)	38	37	36.5	35.5	34	33	31	29
5CPS200-10-A	37	350	5/6		43	42	41.5	40	39	38	36.5	34.5
5CPS200-10	45	350	5/10		56	55	54.5	53.5	53	52	50.5	48.5
5CPS200-20-2B	55	350	5/10		77.5	75.5	73.5	71	68.5	66	62	58.5
5CPS200-20-2A	75	350	5/10		87	85	83	81	79	77	74	70
5CPS200-20-B	75	350	5/16		95.5	93.5	92.5	90.5	88.5	86	82.5	79
5CPS200-20-A	90	350	5/16		100	98.5	97.5	95.5	0.6	91	88	84
5CPS200-20	90	350	5/16		114	112.5	111	109.5	107.5	105	101.5	98.5
5CPS200-30-2B	110	350	5/16		135	132.5	129.5	126	122.5	119	114	108.5
5CPS200-30-A-B	110	350	5/16		139	136.5	134	131	128	124	119	113.5
5CPS200-30-2A	110	350	5/16		145	142.5	140	137	133.5	130	125.5	120