



THIANTHONG INDUSTRY (THAILAND) CO.,LTD

Website:www.energyhealth2002.com

Main office:

Add: 2559,zhongqi tower, No 2000 North zhongshan road,Shanghai

E-mail: infor@aikonchina.com

Website: www.aikonchina.com

Moscow office:

Add: Moscow,Volokolamsk highway, 73, office 257

Tel: +7-499-703-35-23 +7-800-333-10-74

E-mail: aikon@aikonrussia.ru

Website: www.aikonrussia.ru

Aikon PRODUCTION PROGRAM OVERVIEW

D2020-05-22



Pumpingtech International is a Sino-Russian joint venture enterprise, relying on Russia's powerful research and development and domestic production. The company is located in Shanghai, the main product is pumps, IoT, controllers, Industrial Cloud Platform. Company upholds the complete product concept, to provide the perfect products and solutions for customers in China and all over the world.

CONTENTS

- 01 | UTILITY PUMPS
- 02 | SEWAGE PUMPS
- 03 | CANTILEVER PUMPS
- 04 | GENERAL INDUSTRY PUMPS
- 05 | PUMPS FOR CHEMICAL AND PETROCHEMICAL INDUSTRY
- 06 | SLURRY PUMPS
- 07 | GENERAL INDUSTRY MOTOR
- 08 | AUTOMATION SYSTEM
- 09 | SENSORS

I VMB, VMBF

Vertical multistage pumps aikon



Details :

Vertical, multistage, centrifugal, with normal suction, high-pressure, in-line pumps

Technical data:

- Flow rate : up to 240 m³/h,
- Head: up to 305 m,
- Fluid temperature: -15 °C,
- Maximum working: up to 16 bar.

Application area:

1. Water treatment systems
2. Public water supply
3. Pressure increase in pipelines
4. Industrial water supply systems:
5. Cooling and air conditioning
6. Water treatment systems: ultrafiltration, reverse osmosis, oil refineries, separators
7. Irrigation systems: watering, drip and sprinkler

I VMB, VMBF

Vertical multistage frequency controlled pumps aikon

Details:

Highly effective vertical, multistage, centrifugal, With normal suction, high-pressure, in-line pumps, with normal suction, high-pressure, in-line pumps, with frequency control option

Technical data:

- Flow rate: 240 m³/h,
- Head : 305 kW,
- Power: up to 30 kW,
- Fluid temperature -15 °C ~ + 120 °C
- Maximum working: up to 16 bar.

Application area:

1. Engineering systems with uneven water sampling!
2. Water pressure increase: public water supply
3. Industrial pressure increase: water supply for technical needs, high-pressure washing aggregates, firefighting stations
4. Industrial fluid supply: cooling and air conditioning systems, steam boiler cooling systems and condensate pumping, tool cooling systems for metal cutting machines
5. Water purification: ultrafiltration, reverse osmosis oil refineries, separators
6. Irrigation systems: watering, drip and sprinkler systems.



I CMS

Circulation pumps aikon

Details:

Vertical single-stage, centrifugal, with normal suction, in-line.

Technical data:

- Flow rate: up to 1300 m³/h,
- Head : up to 180 m
- Fluid temperature -15 °C ~ + 115 °C
- Maximum working pressure at least 12 bar

Application area:

1. Coolant circulation in heat supply systems, in heating units
2. In central heating systems pumping stations
3. Heat supply systems in residential areas
4. Heating systems in individual houses and in apartment heating systems
5. Water circulation in central conditioning systems (chiller-fancoil), ventilation and cooling systems
6. In technological cooling circulation circuits (chilling towers-heat exchangers)
7. Water supply for cleaning complexes
8. Water supply for industrial systems
9. Firefighting and pressure boost systems

I CMSE

Circulation pumps aikon

Details:

Vertical single-stage, centrifugal, with normal Suction, in-line

Technical data:

- Flow rate: up to 1300 m³/h,
- Head : up to 108 m
- Power: up to 30 kw
- Fluid temperature -15 °C ~ + 115 °C
- Maximum working pressure at least 12 bar

Application area:

1. Coolant circulation in heat supply systems, in central heating units
2. In central heating systems pumping stations
3. Heat supply systems in residential areas
4. Heating systems in individual houses and in Apartment heating systems
5. Water circulation in central conditioning systems (chilling tower-heat exchangers)
6. In technological cooling circulation circuits (chilling towers-heat exchangers)
7. Water supply for cleaning complexes
8. Water supply for industrial systems
9. Firefighting and pressure boost systems



I CHD, HP, VMHP

Horizontal, multistage, centrifugal pumps aikion



Details:

Horizontal multistage centrifugal monoblock normal suction pumps, with axial suction and radial discharge pipes.

Technical data:

- Flow rate : up to 28 m³/h,
- Head: up to 60 m,
- Fluid temperature: -15 °C, ~ +120 °C
- Maximum working pressure: 10 bar.

Application area:

1. Water supply
2. Air conditioning systems
3. Cooling. Circulation and heat supply systems
4. Water purification systems: filtration, water preparation
5. Irrigation systems
6. Sanitary and technical equipment
7. Pressure boost stations



I CHL, CHLF (T)

Horizontal, multistage, centrifugal pumps aikion

Details:

Horizontal multistage centrifugal monoblock normal suction pumps, with axial suction and radial discharge pipes.

Technical data:

- Flow rate : up to 28 m³/h,
- Head: up to 60 m,
- Fluid temperature: -15 °C, ~ +115 °C
- Maximum working: up to 16 bar.

Application area:

1. Water supply
2. Air conditioning systems
3. Cooling. Circulation and heat supply systems
4. Water purification systems: filtration, water preparation
5. Irrigation systems
6. Sanitary and technical equipment
7. Pressure boost stations

I SM

Centrifugal borehole pumps with plastic impellers aikion

Details:

Submersible pumps with diameter of 3, 3.5, 4, 6 inches for water lifting from big depth well. The pumps are equipped with reliable and modern oil-filled electric motors



Technical data:

- Flow : up to 45 m³/h,
- Head: up to 450 m,
- Fluid temperature: 25 °C
- Maximum working pressure: 10 bar.

Application area:

1. Water supply
2. Irrigation system
3. Lowering the water table
4. Pressure boosting system

I SJ

Centrifugal borehole pumps with plastic impellers aikion

Details:

Submersible pumps with diameter of 3, 3.5, 4, 6 inches for water lifting from big depth well.

The pumps are equipped with reliable and modern oil-filled electric motors

Technical data:

- Flow : up to 240 m³/h,
- Head: up to 284 m,
- Fluid temperature: 25 °C
- Maximum working pressure: 38 bar.

Application area:

1. Industrial pressure increase
2. Water intake for water intake for water supply
3. Industrial pump
4. Water supply and pressure increase
5. Pumping industrial fluids
6. Water treatment and desalination
7. Irrigation



SEWAGE PUMPS

Pumps for sewage wage water disposa



I SP

Low-clogging self-priming sewage pumps aikon

Details:

Non-clogged self-priming pumps are used in urban and industrial wastewater treatment systems. This ters and long term service.

Technical data:

- Flow rate : up to $550 \text{ m}^3/\text{h}$,
- Head: up to 27 m,
- Fluid temperature: not more than 40 C ,
- Maximum working pressure: 6 bar.

Application area:

- 1.Non-flammable and non-explosive liquids
- 2.Rainwater and conventional low-aggressive effluents
- 3.Urban Sewerage, construction sites, drainage pumping stations
- 4.Industrial effluents of light, paper, textile, food and chemical industries, power plants, mines, etc.
- 5.Wine and sugar industry

I SSC

Submersible pumps for sewage water disposal aikon

Details:

Sewage pump for wastewater, with optimized hydraulic part, reliable design and protection system, combining high efficiency and performance in the most adverse conditions.

Optimized parameters of the two-channel Impeller provide high resistance against blockages, high hydraulic efficiency. It provides stable operation without turbulent turbulence at high flow rates.

Technical data:

- Flow rate : up to $1500 \text{ m}^3/\text{h}$,
- Head: up to 60 m,
- Fluid temperature: not more than 40 C ,

Application area:

- 1.For sewage pumping
- 2.Industrial pumps
- 3.Industrial fluid supply
- 4.Water purification and desalination



I HSC

Horizontal cantilever chemical pump according to ISO 5199 standard aikon



Details:

For pumping fluids with high density, viscosity and solid inclusions, with open impeller

Technical data:

- Flow rate : up to $3\,300 \text{ m}^3/\text{h}$,
- Head: up to 100 m,
- Fluid temperature up to $+120 \text{ C}$

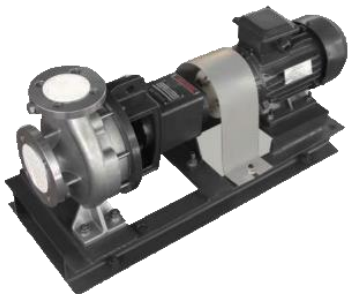
Application area:

- 1.Pulp production
- 2.Recycling of secondary paper
- 3.Paper production
- 4.Chemical industry
- 5.Food production
- 6.Wastewater treatment

CANTILEVER PUMPS

I NESO

Cantilever and cantilever-monoblock pumps
aikón



Details:

Meets EN733 standard
Centrifugal, normal suction, cantilever, single-stage pumps with horizontal shaft, with axial suction and radial pressure pipes, The impeller is hydraulically unloaded from the axial load.
Mounted on a common steel plate. Optional vertical mount.

Technical data:

- Flow rate : up to 1400 m³/h,
- Head: up to 160 m,
- Fluid temperature up to -15 C ~ + 110 C
- Pumps standard: BS EN733/DIN24255
- Maximum working pressure : 16 bar
- Flange standard: DIN 2501 PN16, GB/T 17241.6PN16

Application area:

1. Water supply and preparation;
2. Conditioning and heating systems;
3. Pumping in water cooling and circulation systems;
4. Pumping of industrial water;
5. Firefighting equipment;
6. Rain and irrigation systems;
7. Technological processes

I NES

Cantilever and cantilever-monoblock pumps
aikón

Details:

Meets EN733 standard
Centrifugal, normal suction, cantilever, single-stage pumps with horizontal shaft, with axial suction and radial pressure pipes, The impeller is hydraulically unloaded from the axial load.
Mounted on a common steel plate. Optional vertical mount.

Technical data:

- Flow rate : up to 1400 m³/h,
- Head: up to 160 m,
- Fluid temperature up to -15 C ~ + 110 C
- Pumps standard: BS EN733/DIN24255
- Maximum working pressure : 16 bar
- Flange standard: DIN 2501 PN16, GB/T 17241.6PN16

Application area:

1. Water supply and preparation;
2. Conditioning and heating systems;
3. Pumping in water cooling and circulation systems;
4. Pumping of industrial water;
5. Firefighting equipment;
6. Rain and irrigation systems;
7. Technological processes



I NEC

Single stage double suction pumps aikón

Details:

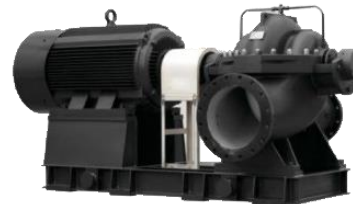
Single-stage centrifugal pumps with double-entry impeller and detachable housing (with longitudinal connection), installed horizontally or vertically, with double suction radial impeller, connecting flanges on the housing.
Also available in explosion-proof API610 BB1 design for refining, petrochemical and gas industry.

Technical data:

- Flow rate : up to 20 000 m³/h,
- Head: up to 230 m,
- Fluid temperature: -15...+110 C
- Maximum working pressure : 25 bar

Application area:

1. Cooling, circulation and purification systems
2. Communal service
3. Energy sector



I HM

Centrifugal pumps with axial impeller
aikón

Details:

Horizontal single stage pump for pumping various mixtures, one-way suction.
Compact and easy to maintain. Gland and mechanical (option) seal. Ball bearings with grease and oil
Lubrication are used as shaft supports.
Versions with electric, diesel, and Mechanical (gear) drive are possible.

Technical data:

- Flow : up to 6000 m³/h,
- Head: up to 20 m,
- Fluid temperature: up to 80 C,

Application area:

1. Liquids aeration;
2. Reconstruction of water circulation;
3. Wastewater treatment;
4. Irrigation/drainage of agricultural land;
5. Pumping liquid from flooded structures;
6. Water treatment and desalination
7. Reverse feed of rock suspensions or rainwater drains;
8. Ship/ferries balancing;
9. Drinking water productions.

PUMPS FOR CHEMICAL AND PETROCHEMICAL INDUSTRY

I CMB

Horizontal ISO2548 multistage pumps aikon

Details:

Pumps with sectional casing, wide flow and head specter, safe and maintain, with long service life. Bearing assembly is made with a discharge disc, thanks to this solution, the axial force is fully compensated (no axial thrust bearing required).



Technical data:

- Flow : up to 850 m³/h,
- Head: up to 660 m. (10-Stage),
- Working environment temperature: no more than 110 C

Application area:

1. Water supply systems
2. Pressure increase systems
3. Firefighting systems
4. Irrigation systems
5. General industrial application
6. Mine water removal
7. Heating systems
8. Sea water supply

I SZ

Chemical centrifugal with fluoroplastic flow part aikon

Details:

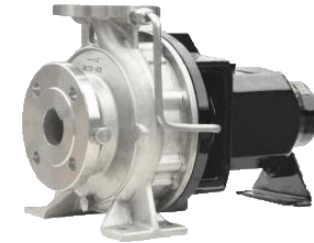
Monoblock, centrifugal, single-stage pump with axial inlet and radial output. Flow parts are made of iron, impeller reinforced with steel. The inlet and outlet pipes are connected to the pipeline via standard flanges.

Technical data:

- Flow : up to 240 m³/h,
- Head: up to 284 m.
- Fluid temperature: -20°C~120°C,
- Maximum working pressure: 10 bar.

Application area:

1. Pumping of chemically active and neutral liquids:
2. Acids of different concentrations, oxidizers, organic solvents
3. Alkalis,
4. Salt solutions,
5. Electroplating mixtures, pesticides, paints, varnishes



I SMA(A)

Horizontal cantilever chemical units for sewage water removal according to iso5199 aikon

Details:

Non-self-suction cantilever centrifugal single-stage chemical SMA (A) pump with horizontal rotor shaft, axial suction and

Technical data:

- Flow : up to 1800 m³/h,
- Head: up to 160 m.
- Fluid temperature: -15°C to +180°C,
- Maximum working pressure: 25 bar.
- Flange standard: DIN 2501, GB/T 17241.6
- Pump standard: ISO5199/2858, EN25199.

Application area:

1. water in pulp and paper industry;
2. water in metallurgical industry;
3. water in food industry;
4. Water in sugar production;
5. drinking water supply;
6. wastewater treatment;
7. Chemical industry;
8. energy



I SMB

Details:
Pump for chemical media with open impeller according to ASME B73.1 standard aikon

- Technical data:**
- Flow - up to 1600 m³/h,
 - Head - up to 222 m.
 - Maximum pressure: 25 bar.
 - Temperature range: -120...371 C

- Application area:**
1. Petrochemical, oil and gas industry
 2. Chemical production
 3. Gas industry
 4. Electroenergetics
 5. Processing, production and oil distribution.
 6. Metallurgical and steel industry
 7. Paper (pulp) mills
 8. Nuclear power plants
 9. CHP



I AHC

Pumps for chemical medias aikon compliant with OH1/OH2 API610

Details:
Heavy duty pumps for oil, chemical and mining industries

- Technical data:**
- Flow - up to 3000 m³/h,
 - Head - up to 350 m.
 - Maximum working pressure: 10 bar.
 - Special design for pressure up to 150 bar
 - Temperature range: -120...450 C,
 - Frequency: 50Hz/60 Hz

- Application area:**
1. Petrochemical, oil and gas industry
 2. Heavy-duty chemical production (non-stop production)
 3. Electroenergetics
 4. Automotive industry
 5. Food industry
 6. Metallurgical (steel) industry
 7. Paper (pulp) mills

I QY/QYL

Self-priming vortex pumps FLOTATORS aikon of stainless steel or gas-liquid pumps-mixers



- Technical data:**
- Flow: up to 18 m³/h,
 - Head: up to 70 m.
 - Fluid temperature: -15 C ~+ 120 C
 - Gas-liquid ratio 1:9 (gas suction volume 8-10%)
 - Flow part made from stainless steel AISI304;
 - Inlet: horizontal;
 - Outlet: vertical

- Application area:**
1. Gas-liquis mixtures preparation, ozonized water, biological treatment
 2. Heating, cooling systems
 3. Filtration systems: pumping from underground tanks and high-pressure supply of volatile liquids (gasoline, benzine, various solvents, etc.)
 4. Aerosol treatment
 5. Main application – long-term operation in the high-rise buildings water supply, in high-pressure tanks, water supply to flow heater
 6. Pumping high gas content liquid through long horizontal pumplines,
 8. Nuclear power plants
 9. CHP

I SMB

Details:
Sump Pump. For water, petroleum and oil products process water, river water, river water, chemical solutions and other applications.

- Technical data:**
- Capacity : 3 to 1,931 m³/h
 - Head 3 to 130 m
 - Maximum pressure 40 bar.
 - Temperature 200 C

- STRUCTURE CHARACTERISTICS:**
- Vertical arrangement.
 - Sump.
 - Single suction.
 - Single stage.
 - API 610 latest edition construction available (VS4 type)



SLURRY GROUND PUMPS

I QJ

Submersible pumps aikon

Details:

Pump for groundwater drainage, liquids with solids or fibrous inclusions

Technical data:

- Flow up to 1 000 m³/h,
- Head up to 1000 m.
- Fluid temperature 25 C
- Maximum installation depth: up to 70m,
- Material: iron, SS304, SS316, bronze



Application area:

1. Open mining
2. Active water drainage



I ZJ,ZJA,ZJG,ZJW,ZJL

Ground (slurry) pumps aikon

Details:

For pumping liquids containing large solid particles.

Technical data:

- Flow up to 3000 m³/h,
- Head up to 130 m.
- Pulp temperature: up to 110 C,
- Pulp density: up to 1600 kg/m³,
- Concentration of solid inclusions in the liquid mixture by mass: up to 45 %

Application area:

1. Mining and processing and metallurgical enterprises,
2. Thermal power plants,
3. Cement production plants,
4. Diamond and gold mining plants,
5. Crushing technological lines,
6. Mining processing etc. etc. mineral processing, etc

I QJ

Details:

Electric motors are high performance economical asynchronous 3-phase low voltage air cooled electric motors with frequency control of the rotor speed option

Technical data:

- Energy efficiency class: IE2/IE3
- Frequency range: 5-50 (60) Hz
- Phase: 3 phases;
- Dimension (rotation axis height): 80-400;
- Power – 0,55-500 kW;
- Voltage – 220/380/660V, 230-400/690V;
- Polarity -2,4,6,8, poles;
- Insulation class – F (H on request);
- protection class – IP54, IP55, IP65.



I Asynchronous high voltage motors aikon

Details:

The motors could be widely used to drive all variety of general machinery.

Technical data:

- Frequency range: 5-50(60) Hz
- Phase: 3 phases;
- Dimension (rotation axis height): 80-630;
- Power – 200-5600 kW;
- Voltage – 3000/3300/6000/6600V, 10000/10000V;
- Polarity -2,4,6,8,10,12,16,20 poles;
- Insulation class – F (H on request);
- protection class – IP54, IP55, IP623.